

See discussions, stats, and author profiles for this publication at: <https://www.researchgate.net/publication/303532199>

# Carbon and water vapor balance in a subtropical pine plantation

Article in *iForest - Biogeosciences and Forestry* · May 2016

Impact Factor: 1.27 · DOI: 10.3832/ifor1815-009

READS

3

4 authors:



[Gabriela Posse](#)

Instituto Nacional de Tecnología Agropecu...

26 PUBLICATIONS 317 CITATIONS

[SEE PROFILE](#)



[Nuria Lewczuk](#)

National Scientific and Technical Research ...

4 PUBLICATIONS 4 CITATIONS

[SEE PROFILE](#)

[Klaus Richter](#)

Instituto Nacional de Tecnología Agropecu...

4 PUBLICATIONS 4 CITATIONS

[SEE PROFILE](#)



[Piedad María Cristiano](#)

National Scientific and Technical Research ...

13 PUBLICATIONS 32 CITATIONS

[SEE PROFILE](#)

## Carbon and water vapor balance in a subtropical pine plantation

Gabriela Posse<sup>(1)</sup>, Nuria Lewczuk<sup>(1-2)</sup>, Klaus Richter<sup>(1)</sup>, Piedad Cristiano<sup>(2-3)</sup>

Afforestation has been proposed as an effective tool for protecting primary and/or secondary forests and for mitigating atmospheric CO<sub>2</sub>. However, the dynamics of primary productivity differs between plantations and natural forests. The objective of this work was to evaluate the potential for carbon storage of a commercial pine plantation by determining its carbon balance. Measurements started when trees were aged 6 and ended when they were older than 8 years. We measured CO<sub>2</sub> and water vapor concentrations using the Eddy covariance method. Gross primary productivity in 2010 and 2011 was 4290 ± 473 g C m<sup>-2</sup> and 4015 ± 485 g C m<sup>-2</sup>, respectively. Ecosystem respiration ranged between 7 and 20 g C m<sup>-2</sup> d<sup>-1</sup>, reaching peaks in all Februaries. Of the 30 months monitored, the plantation acted as carbon source for 21 months and as carbon sink for 6 months, while values close to neutrality were obtained during 3 months. The positive balance representing CO<sub>2</sub> loss by the system was most likely due to the cut branches left on the ground following pruning activities. The plantation was subjected to pruning in January and September 2008 and to sanitary pruning in October 2010. In all cases, cut branches were not removed but remained on the ground. Residue management seems to have a very important impact on carbon balance.

**Keywords:** Afforestation, Carbon Source, Ecosystem Respiration, Pruning, Thinning

### Introduction

Land use change is highly responsible for the increase in the concentration of greenhouse gases (GHGs) in the atmosphere, thus having an important impact on the regional climate (Strengers et al. 2010, IPCC 2014). The growth of the world's population has increased the demand for agricultural land, leading to more pressure on forests. These are estimated to store about 45% of the terrestrial carbon, contributing to 50% of the net primary production (Sabine et al. 2004). Therefore, the reduction of forests is expected to dramatically impact the balance of atmospheric CO<sub>2</sub>. Mid-latitude forests are among the most modified ecosystems over the last century, but current land-use change models predict increased over-exploitation of tropical forests (Voltaire 2006). The conservation of forest resources appears as a reason-

able option for mitigating the concentration of greenhouse gases (GHGs) in the atmosphere (Nabuurs et al. 2007, McKinley et al. 2011). Afforestation has been proposed as an effective tool for protecting primary and/or secondary forests and for mitigating atmospheric CO<sub>2</sub> levels (Shvidenko et al. 1997, Peichl et al. 2010, Korkanç 2014).

The dynamics of primary productivity in plantations differs from that of native forests, as it depends on the age of the stands, the species planted, soil type, climate and management practices (Paul et al. 2002), while that of native forests depends directly on the age of the trees (Noormets et al. 2007). Plantation stands are capable of producing high biomass yields, but they are exposed to continuous disturbances (e.g., field preparation, fertilization, weed control, thinning and har-

vest) which may possibly affect CO<sub>2</sub> uptake. Only a few studies conducted in forest systems have included large woody debris such as branches in the analysis of carbon flux because of their low decomposition rate (Chambers et al. 2000). Overall, commercial plantations have been less studied than natural forests. Noormets et al. (2012) reported high values of gross productivity, and high values of soil and litter respiration in a 25 years-old pine plantation. Paul et al. (2003) found that carbon losses occur within the first 10 years after the establishment of the plantation, while 30 years are required to restore the initial levels. The impact of afforestation on the global carbon budget has become increasingly important due to the expansion of plantation areas. McKinley et al. (2011) estimated that plantations are responsible for 50% of carbon uptake by forests of USA.

The estimation of carbon balance in plantations is a challenge because of the slowness of soil cycling processes, the spatial heterogeneity of soils and the low rate of tree growth. The eddy covariance technique allows direct estimation of the exchange of matter and energy between an ecosystem and the atmosphere (Aubinet et al. 2000, Baldocchi 2003). It is used to measure net ecosystem CO<sub>2</sub> exchange (NEE), even for short periods of time, providing information on entire ecosystems over surface areas of the order of hundreds of square meters (Schmid 1994). Moreover, this is a highly robust method because fluxes are obtained almost continuously on timescales ranging from half

□ (1) INTA - Instituto de Clima y Agua, N. Repetto y De Los Reseros s/n, 1686 Hurlingham, Provincia de Buenos Aires (Argentina); (2) CONICET, Sarmiento 440, Buenos Aires (Argentina); (3) Departamento de Ecología, Genética y Evolución, Instituto IEGEBA (CONICET-UBA), Facultad de Ciencias Exactas y Naturales, Universidad de Buenos Aires (Argentina)

@ Gabriela Posse ([posse.gabriela@gmail.com](mailto:posse.gabriela@gmail.com))

Received: Aug 18, 2015 - Accepted: Jan 28, 2016

**Citation:** Posse G, Lewczuk N, Richter K, Cristiano P (2016). Carbon and water vapor balance in a subtropical pine plantation. *iForest* (early view). - doi: 10.3832/ifor1815-009 [online 2016-05-25]

Communicated by: Tamir Klein

hours to multiple years. Globally, over 500 eddy covariance flux towers are currently operating (<http://www.fluxnet.ornl.gov/>). Most of these are located in the United States and Europe, while countries of the Southern Hemisphere are poorly represented. Furthermore, the forests sites included in the Fluxnet network often correspond to native forests undisturbed or undergoing restoration.

The present study reports eddy covariance measurements carried out during the first rotation of a commercial pine plantation. Measurements started when trees were 6 years old and lasted for 2.5 years. The plantation was subjected to pruning in January and September 2008, and to sanitary pruning in October 2010. In all these occasions, cut branches were not removed from the ground. Our main objective was to determine the net ecosystem CO<sub>2</sub> and water vapor exchange to assess the potential of the pine plantation for carbon storage, in the context of residue practices.

## Material and methods

### Study area

The study was conducted in a commercial *Pinus taeda* plantation, near the locality of Virasoro, Corrientes province, Argentina (28° 14' 22.2" S, 56° 11' 19.11" W), between December 2009 and May 2012. The stands were located on a gentle hillock at elevation 127 m a.s.l. The region has a subtropical climate without a dry season. Mean annual rainfall is 1800 mm, and mean temperature is 21.1 °C, with mean maximum and minimum temperatures of 26.5 °C and 15.7 °C, respectively (historical data for the period 1980-2010, National Weather Service). Mean air humidity is 72%. The soils belong to the Ultisols order (Kandihumult), with clayish texture, good drainage, and a depth of about 150 cm (INTA Soil Map at a 1:500,000 scale). The plantation forest was set up in 2003, replacing natural grasslands. It was subjected to pruning in January and September 2008 and to sanitary pruning in October 2010 due to infestation by wood wasp *Sirex noctilio*, a pest of pine trees. On these occasions, cut branches were left on the forest floor. Measure-

ments started when trees were 6 years old and 12 m in height. The tower equipped with instruments was surrounded by at least 700 m of homogeneous forest in all directions.

### Instruments

Instruments were installed on a 32-m fire surveillance tower at 18 m above the ground and at 6 m above the canopy. The tower is property of Forestal Bosques del Plata S.A. (<http://www.bosquesdelplata.com.ar>). We used a 3-D sonic anemometer (CSAT3<sup>®</sup>, Campbell Scientific, Logan, Utah, USA) for measuring wind speed in the three directions and sonic temperature, and a gas analyzer (LI-7500<sup>®</sup>, LI-COR, Lincoln, Nebraska, USA) for measuring the absorption of infrared radiation by gases (CO<sub>2</sub> and H<sub>2</sub>O vapor).

Data recorded were stored with a data acquisition system (CR3000 Micrologger<sup>®</sup>, Campbell Scientific, Logan, Utah, USA). The anemometer and the analyzer were placed 20 cm apart. Net radiation was measured using a NR-Lite<sup>®</sup> net radiometer (Campbell Scientific, Logan, Utah, USA), and photosynthetically active radiation (PAR) with a GaAsP<sup>®</sup> photodiode (cavadevices.com, Buenos Aires, Argentina). Missing *in situ* data due to technical problems for short-term periods were obtained from the Down-welling Surface Shortwave Flux (DSSF) product, which is generated on the basis of satellite data (<http://landsaf.meio.pt/>).

### Raw data processing and correction procedures

Raw data from the sonic anemometer and the gas analyzer (three wind velocity components, sonic temperature and concentrations of CO<sub>2</sub> and water vapor) were sampled at 20 Hz. For each variable, 36,000 data were averaged over 30-min time periods and then processed to calculate CO<sub>2</sub> flux (FCO<sub>2</sub>, in kg m<sup>-2</sup> s<sup>-1</sup>). The calculation of CO<sub>2</sub> fluxes is based on an equation derived by Webb et al. (1980 - eqn. 1):

$$F_{CO_2} = \overline{w' \rho'_{CO_2}} + \left[ \frac{m_d \cdot \overline{w' \rho'_v}}{m_v \cdot \overline{\rho_d}} + \left( 1 + \frac{m_d \cdot \overline{\rho_v}}{m_v \cdot \overline{\rho_d}} \right) \cdot \frac{\overline{w' T'}}{T} \right] \cdot \overline{\rho_{CO_2}}$$

where  $T$  is air temperature (in K),  $m_d / m_v = 1.6077$  is the ratio of the molar mass of dry air ( $m_d$ ) and the molar mass of water vapor ( $m_v$ ), and  $\rho_{CO_2}$ ,  $\rho_v$  and  $\rho_d$  are the densities of CO<sub>2</sub>, water vapor and dry air (in kg m<sup>-3</sup>), respectively. The equation assumes stationary and horizontally homogeneous conditions.

We applied the corrections indicated in Tab. 1, i.e., synchronization between the sonic anemometer and gas analyzer, tilt correction to the vertical velocity measured by the sonic anemometer, conversion of sonic temperature data into air temperature data when needed, and covariance correction for the inclusion of all the frequencies of CO<sub>2</sub> turbulent transfer. Raw data were processed and fluxes were calculated using the free software EddyPro (LiCor Biosciences, Lincoln, Nebraska, USA). Outlier cleaning and removal of data below the turbulence threshold were carried out with the free software R (<http://www.r-project.org>) and Visual Basic for Application (VBA) within a Microsoft Excel<sup>®</sup> platform. The procedure to calculate NEE, GPP and respiration using the values measured is depicted in Fig. 1.

We used the model of Hsieh et al. (2000) to estimate the actual footprint of the measured fluxes. By applying this model, we calculated the distance from the sensors at which footprint contribution is maximum (Hmax) and the surface area including 80% of the footprint value to confirm whether the measured fluxes corresponded to the study area. Ecosystem evapotranspiration was calculated from the latent heat flux  $\lambda E$  (in W m<sup>-2</sup>), following Foken (2008 - eqn. 2):

$$\lambda E = \lambda \cdot \left( 1 + \frac{m_d \cdot \overline{\rho_v}}{m_v \cdot \overline{\rho_d}} \right) \cdot \left( \overline{w' \rho'_v} + \overline{\rho_v} \cdot \frac{\overline{w' T'}}{T} \right)$$

where  $\lambda$  ( $\approx 2.454$  MJ kg<sup>-1</sup>) is the latent vaporization heat, which depends slightly on temperature, and  $E$  is the water vapor flux (in kg m<sup>-2</sup> s<sup>-1</sup>) corresponding to the evapotranspiration rate, which can be expressed as (eqn. 3):

$$ET = \frac{1000 \cdot \Delta t}{\rho_{H_2O}} \cdot \sum_{i=1}^{48} E_i = 1756 \cdot \sum_{i=1}^{48} E_i$$

**Tab. 1** - Corrections applied to raw data recorded by the instruments of the measurement system.

Problem	Correction method	Bibliographic sources
Time lag between sonic anemometer and gas analyzer measurement	Maximization of the covariances between the vertical wind velocity and CO <sub>2</sub> and water vapor concentrations	Aubinet et al. (2012)
Sonic anemometer is slightly tilted, requiring correction of wind velocity measurements	Rotation of the coordinate system and re-calculation of horizontal and vertical components of wind velocity	Aubinet et al. (2000), Wilczak et al. (2001)
Measurement of sonic temperature -instead of air temperature- to calculate the CO <sub>2</sub> flux with the equation of Webb et al. (1980)	Estimation of air temperature and of covariances containing air temperature based on measurements of sonic temperature and air humidity	Schotanus et al. (1983), Liu et al. (2001)
Missing values of turbulence due to instrumental limitations point out the need of covariance correction	Spectral correction of covariances considering turbulence frequencies that were not captured by the measurement system	Kaimal et al. (1972), Moore (1986), Moncrieff et al. (1997), Massman (2000), Massman & Clement (2004)

where  $ET$  is the evapotranspiration (in  $\text{mm H}_2\text{O d}^{-1}$ ),  $\rho_{\text{H}_2\text{O}}$  is the water density ( $1025 \text{ kg m}^{-3}$ ) and  $E_i$  is the water vapor flux measured for each of the 48 half-hours in a day.

### Removal of $\text{CO}_2$ fluxes under low friction velocity conditions and data gap filling

The Eddy covariance technique requires turbulent conditions. The lack of turbulence is associated with low friction velocities ( $u^*$ ). The method described by Reichstein et al. (2005) was applied to determine the threshold value, using a moving window ( $\pm 14$  days). During periods when friction velocity ( $u^*$ ) was below a threshold value,  $\text{CO}_2$  fluxes were removed from the data set. Data gaps were due to technical problems involving sensor calibration, maintenance of the experimental system, power failure and data acquisition failure. Gaps were filled according to the methodology proposed by Falge et al. (2001) and Reichstein et al. (2005), and subsequently recommended by Moffat et al. (2007). The half-hourly Net Ecosystem Exchange was calculated as the sum of  $\text{CO}_2$  fluxes and expressed on a daily, monthly or annual basis.

The uncertainty in estimates was calculated by applying the method of Hollinger & Richardson (2005), which is based on the pairwise comparison between  $\text{CO}_2$  flux values measured within one day under similar meteorological conditions of solar radiation, temperature and wind speed. The gap-filling error was also estimated by first removing each  $\text{CO}_2$  flux record one at a time from the data set, applying the gap-filling methodology and then comparing the measured and calculated values. This procedure was repeated for each  $\text{CO}_2$  flux measured, thus obtaining a set of differences between the measured and calculated values. A histogram of these differences can be used to derive the standard deviation of the underlying distribution, in the same way as for the analysis of the random measurement error.

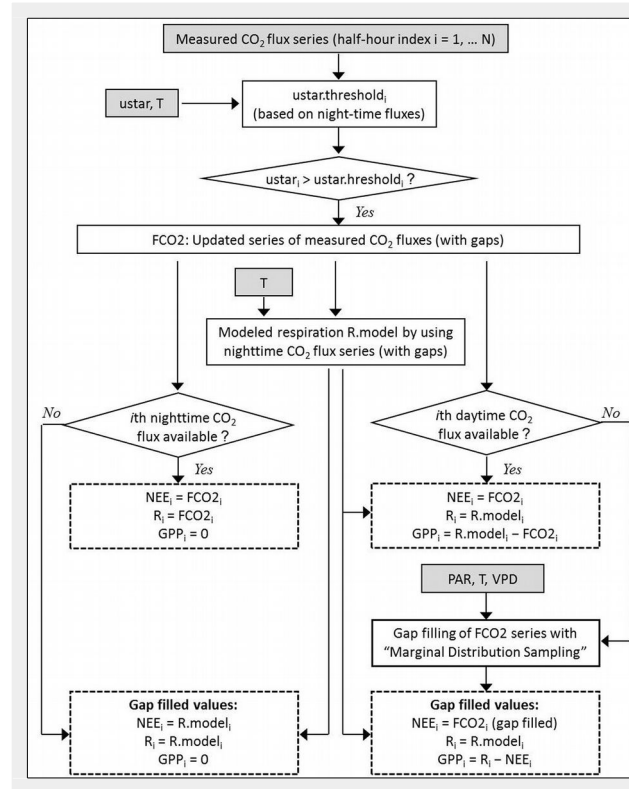
### Ecosystem Respiration ( $R_{\text{eco}}$ ) and Gross Primary Production (GPP)

We used an Arrhenius-like model to describe the dependence of respiration on temperature (Lloyd & Taylor 1994). Ecosystem Respiration was calculated as follows (eqn.4):

$$R = R_{\text{ref}} \cdot e^{\left( \frac{E_0}{T_{\text{ref}} - T_0} - \frac{1}{T - T_0} \right)}$$

where  $R_{\text{eco}}$  is the Ecosystem Respiration (in  $\text{mg CO}_2 \text{ m}^{-2} \text{ s}^{-1}$ ),  $T$  is the temperature (in  $^\circ\text{C}$ ),  $R_{\text{ref}}$  is for  $T = T_{\text{ref}}$ ,  $E_0$  is a parameter related to activation energy (in  $^\circ\text{C}$ ),  $T_{\text{ref}}$  is the reference temperature ( $= 10^\circ\text{C}$ ), and  $T_0$  is a parameter set at  $-46.02^\circ\text{C}$ .

The methodology described by Reichstein et al. (2005) was used to determine the values of  $R_{\text{ref}}$  and  $E_0$ , based on the regression analysis of fluxes measured dur-



**Fig. 1** - Scheme of the determination of gap-filled series of Net Ecosystem Exchange (NEE), respiration of the ecosystem (R) and Gross Primary Production (GPP). The input variables are half-hour values of  $\text{CO}_2$  fluxes, air temperature (T), photosynthetically active radiation (PAR), vapor pressure deficit (VPD) and friction velocity ( $u^*$ ). Gap filling at daytime is carried out by applying “Marginal Distribution Sampling”, which is a methodology proposed by Reichstein et al. (2005).

ing nighttime. A single value was assigned to  $E_0$  for the entire study period, while  $R_{\text{ref}}$  was calculated within a 7-night window. In addition, Reichstein et al. (2005) provided an equation for estimating the error associated with the calculated Ecosystem Respiration (eqn. 5):

$$\Delta R = R \left[ \frac{\Delta R_{\text{ref}}}{R_{\text{ref}}} + \Delta E_0 \cdot \frac{T - T_{\text{ref}}}{(T_{\text{ref}} - T_0) \cdot (T - T_0)} \right]$$

We can now calculate the Gross Primary Production (GPP) as follows (eqn. 6):

$$GPP = -NEE + R$$

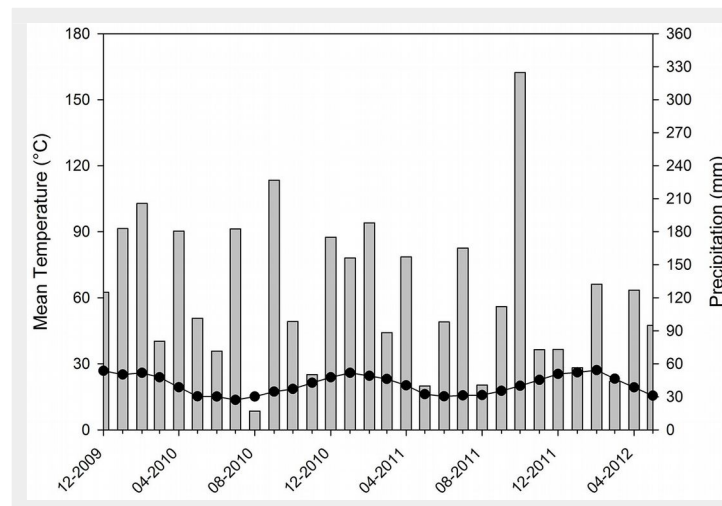
A conservative estimate of the error in Gross Primary Production ( $\Delta\text{GPP}$ ) is given by (eqn. 7):

$$\Delta\text{GPP} = \Delta\text{NEE} + \Delta R$$

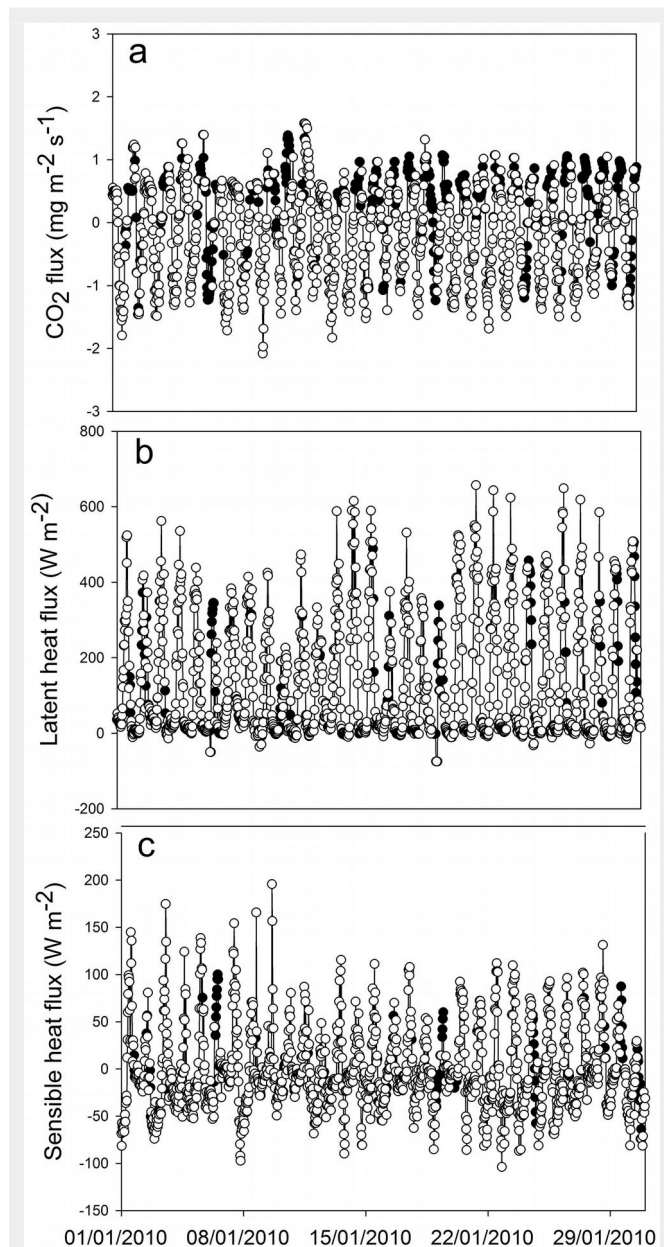
### Results

Mean air temperature during the study period ranged between  $15.2^\circ\text{C}$  (June 2011) and  $28.3^\circ\text{C}$  (January 2011). Solar radiation ranged between  $32 \text{ MJ m}^{-2}$  in summer and  $13 \text{ MJ m}^{-2}$  in winter. Accumulated rainfall for 2010 and 2011 was  $1573 \text{ mm}$  and  $1516 \text{ mm}$ , respectively, these values being similar to each other but lower than the climatological mean (Fig. 2).

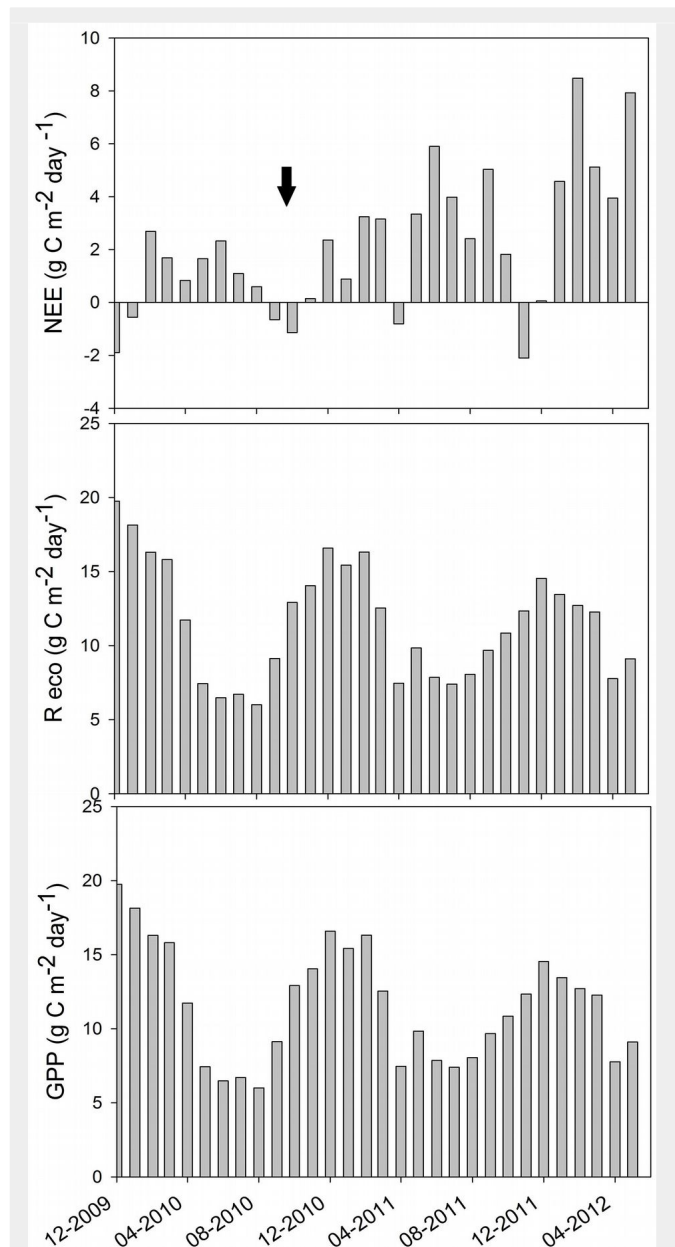
At the beginning of the study period (summer 2009/2010) we obtained the pattern of  $\text{CO}_2$  flux expected for a green ecosystem. The maximum values of instantaneous  $\text{CO}_2$  flux to the ecosystem were around  $-1.8 \text{ mg CO}_2 \text{ m}^{-2} \text{ s}^{-1}$  and nighttime respiration reached a peak of  $1 \text{ mg CO}_2 \text{ m}^{-2} \text{ s}^{-1}$  (Fig. 3). The minimum and maximum values of Ecosystem Evapotranspiration ( $ET$ ) were obtained in June 2010 (mean daily  $ET$  of  $1.4 \text{ mm}$ ) and January 2010 (mean daily



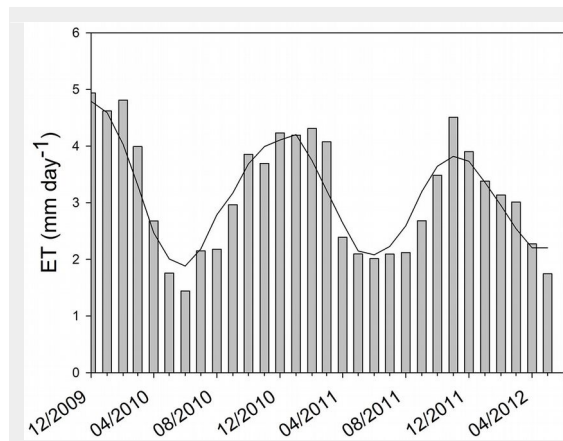
**Fig. 2** - Mean monthly temperature (lines with dots) and monthly accumulated precipitation (bars) during the study period.



**Fig. 3** - Extracts of flux series (January 2010): (a) carbon dioxide, (b) latent heat and (c) sensible heat. The white symbols represent measured fluxes, the black symbols represent gap-filled values.



**Fig. 5** - Daily mean of the (a) Net Ecosystem Exchange (NEE), (b) respiration of the ecosystem ( $R_{eco}$ ) and (c) Gross Primary Production (GPP) of the ecosystem during the measurement period, between December 2009 and May 2012. The moving average of the GPP is also shown, highlighting the seasonal dependence of the pine plantation to carbon storage due to tree growth. Dark arrow points out the sanitary pruning date.

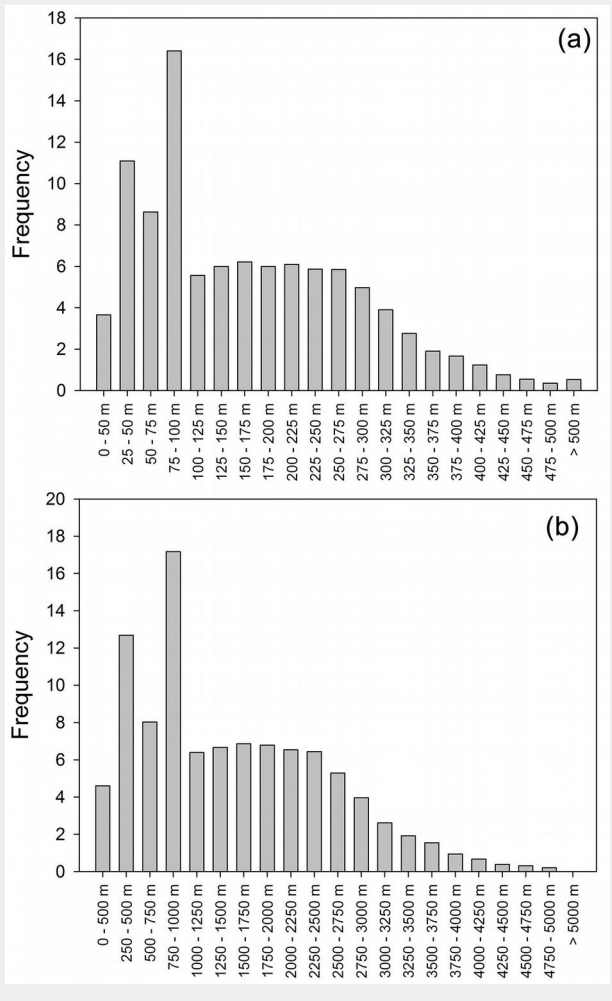


**Fig. 4** - Daily mean of evapotranspiration ( $ET$ ) in  $\text{mm H}_2\text{O d}^{-1}$ . The evapotranspiration is calculated by using the latent heat flux measured in the pine forest between December 2009 and May 2012. The moving average line highlights the seasonal behavior of the evapotranspiration.

$ET$  of about 5 mm), respectively (Fig. 4). Overall,  $ET$  was 1161 mm for 2010 and 1132 mm for 2011 (from January to December). By comparing  $ET$  and rainfall values, it can be seen that there was a positive water balance (water gain) of 412 mm in 2010 and 384 mm in 2011.

A maximum daily mean NEE of  $-2.1 \text{ g C m}^{-2} \text{ d}^{-1}$  was recorded in November 2011 and a minimum daily mean NEE of  $8.5 \text{ g C m}^{-2} \text{ d}^{-1}$  in February 2012 (Fig. 5a). The system had positive values of NEE in most of the months (acting as a carbon source), while it had negative values in December 2009, January, September and October 2010, and April and November 2011 (acting as a car-

**Fig. 6** - Half-hourly frequency (a) of the distance between the flux tower and the footprint maximum and (b) of the distance between the flux tower and the point that represents 80% of the integrated footprint. The footprint calculations were carried out with the footprint model of Hsieh et al. (2000).



bon sink). Ecosystem respiration was calculated with  $E_0 = (344 \pm 32) ^\circ\text{C}$ , which falls within the range reported by previous studies for other locations (Reichstein et al. 2005). Ecosystem respiration ranged between 7 and about  $20 \text{ g C m}^{-2} \text{ d}^{-1}$ , with maximum values in summer, as expected based on its dependence with temperature. In general, peaks were observed in February of both years, with only slight differences among the maximum values for the three summers (Fig. 5b). Likewise, highest and lowest values of daily GPP were obtained for the summer and winter months, respectively (Fig. 5c). The maximum GPP was obtained in December 2009, with about  $20 \text{ g C m}^{-2} \text{ d}^{-1}$ , and the minimum GPP was recorded in August 2010, with  $6.0 \text{ g C m}^{-2} \text{ d}^{-1}$ . Maximum GPP decreased from about  $20 \text{ g C m}^{-2} \text{ d}^{-1}$  in December 2009, to  $17 \text{ g C m}^{-2} \text{ d}^{-1}$  in December 2010, to  $12 \text{ g C m}^{-2} \text{ d}^{-1}$  in December 2011. This result is probably due to the growth of the stand, as trees were 6 years old at the beginning of the 2.5-year study period. Mean GPP ( $\pm$  SD) was  $4290 \pm 473 \text{ g C m}^{-2}$  for 2010 and  $4015 \pm 485 \text{ g C m}^{-2}$  for 2011. Uncertainty analysis showed a random error of  $0.31 \text{ mg CO}_2 \text{ m}^{-2} \text{ s}^{-1}$  and the gap-filling error was  $0.27 \text{ mg CO}_2 \text{ m}^{-2} \text{ s}^{-1}$ , resulting in total errors of about  $1 \text{ g C m}^{-2} \text{ d}^{-1}$ .

The footprint analysis revealed that the

point of maximum contribution of the footprint was at a distance of up to 144 m to the sensors, while 80% of the footprint value was within an area with a radius of 1294 m around the sampling point (Fig. 6). These results confirm that the fluxes measured corresponded to the stands under consideration.

## Discussion

The analysis of the GPP dynamics during our 2.5-year study shows maximum values in the summer months, mainly December. The highest instantaneous rates ranged between  $-2.5$  and  $-3.0 \text{ mg CO}_2 \text{ m}^{-2} \text{ s}^{-1}$ , these values being similar to those reported for other areas. For example, Goldstein et al. (2000) obtained GPP values ranging between  $3.3$  and  $4.0 \text{ mg CO}_2 \text{ m}^{-2} \text{ s}^{-1}$  for young ponderosa pine plantations in the Sierra Nevada Mountains, California. On the other hand, Coursolle et al. (2006) reported maximum NEE values of up to  $-2.0 \text{ mg CO}_2 \text{ m}^{-2} \text{ s}^{-1}$  for conifer stands of different age, while young forest stands had a remarkably lower NEE (about  $-0.25 \text{ mg de CO}_2 \text{ m}^{-2} \text{ s}^{-1}$ ).

Net carbon gain is expected to occur in a forest, as reported for other forests of the world (Curtis et al. 2002, Marino et al. 2005). Many studies have recorded an increase in  $\text{CO}_2$  emissions after harvest with-

out providing any information on their origin, while others found no effect. Covington (1981) and Yanai et al. (2003) estimated a carbon loss of 20% following tree harvest. Pruned branches left on the forest floor can be expected to contribute to soil carbon, but only as long as carbon fixation rate exceeds their respiration rate. Often, changes in temperature and humidity due to land work lead to changes in ecosystem respiration rates (Toland & Zak 1994, Yanai et al. 2003, Hagemann et al. 2010).

However, some studies have also reported positive NEE values but the system acted as a net carbon source. For example, Cai et al. (2011), who studied a hybrid poplar plantation on a former agricultural land in Alberta, Canada, found that the annual carbon balance shifted from a net source of  $312 \text{ g C m}^{-2}$  in year 1, to approximately C-neutral in year 5. Law et al. (2001) stated that ecosystem respiration in young stands may be higher than the NPP of the re-growth due to the decomposition of dead biomass from the previous forest generation. They compared net ecosystem production (NEP) between young (14 years old) and old (45/250 years old) pine stands in Oregon and found that the old stands gained carbon at a rate of  $28 \text{ g C m}^{-2} \text{ yr}^{-1}$ , while the young stands lost carbon at a rate of  $32 \text{ g C m}^{-2} \text{ yr}^{-1}$ . This indicates that the young stands did not yet reach the net sequestration capacity of the old ones. Our study area also experienced a drastic ecosystem alteration because the original ecosystem (natural grassland) was replaced by a plantation in 2003. We detected that the system acted as a carbon sink only during December 2009, January, September and October 2010, and April and November 2011.

It is probably that the high ecosystem respiration rates obtained in the study area resulted from pruning conducted prior to our measurements and from the sanitary pruning made during the course of this study in October 2010, after which a large amount of cut branches accumulated on the ground until they were subjected to decomposition, whose rate is expected to increase with time. It is reasonable to suppose that the remains of branches left on the ground increased the amount of soil carbon available for the ecosystem respiration. Noormets et al. (2012) found that respiration of plant litter lasted for 2 years, while heterotrophic respiration (from root remains) showed an emission peak at 3 and 4 years after harvest. In addition, they stated that part of the "old" soil carbon pool was respired, and that it took 4.5 years for the plantation to act as a carbon sink and 9.5 years to regain the carbon sink capacity after harvest.

Forestry also has a substantial impact on the albedo and the hydrological balance, in terms of evapotranspiration, water infiltration into the soil and water lost by runoff. These factors, which may account for major changes in local climate conditions

and water availability downstream (Bonan 2008, Nosetto et al. 2012), should be taken into account when planning a major land-use change such as the one considered in our study, i.e., from grassland to plantation. In the study area, the dynamics of the river basin appears to be unaffected by forest stands because water is not a limiting resource.

## Conclusions

In our study area, the estimated respiration rates resulted from the respiration of trees, soil microorganisms and soil carbon. The replacement of the original grassland by a pine plantation (e.g., removal of the original vegetation, land preparation) led to changes with long-term consequences. A large amount of cut branches resulting from pruning activities were accumulated on the ground and subjected to decomposition. As a consequence, the studied forest had high ecosystem respiration rates, up to 20 g C m<sup>-2</sup> d<sup>-1</sup> in summer. The decrease in GPP with time and the maintenance of ecosystem respiration rates cause NEE to increase with time, with positive values indicating carbon loss. Thus, the system acted as a carbon source in most of the months, in contrast to that expected for a forest system.

## Acknowledgements

Thanks are due to *Forestal Bosques del Plata S.A.* (FBP) for allowing field measurements in the plantation (Technical Cooperation Agreement INTA/FBP No. 20020); to Cesar Niklas, German Becerro and Darío Britez from FBP for their assistance with the logistics; to Mr. Fabián, the operator of the fire surveillance tower; to Martin Belomo and Jorgelina Corin for their help in sensor setting-up and maintenance. Silvia Pietroskovsky improved the English version. NL and PC are PhD fellows of the *Consejo Nacional de Investigaciones Científicas y Técnicas (CONICET)*, Argentina, and KR was supported by the Center for International Migration (CIM), Frankfurt, Germany. This work was supported by the *Instituto Nacional de Tecnología Agropecuaria (INTA)*, Projects AERN 3632, AERN 239321 and PNNAT 1128023.

## References

- Aubinet M, Grelle A, Ibrom A, Rannik Ü, Moncrieff J, Foken T, Kowalski AS, Martin PH, Berbigier P, Bernhofer Ch, Vlemment R, Elbers J, Granier A, Grünwald T, Morgentensern K, Pilegaard K, Rebmann C, Snijders W, Valentini R, Vesala T (2000). Estimates of the annual net carbon and water exchange of forests: the EU-ROFLUX methodology. *Advances in Ecological Research* 30: 113-175. - doi: [10.1016/S0065-2504\(08\)60018-5](https://doi.org/10.1016/S0065-2504(08)60018-5)
- Aubinet M, Vesala T, Papale D (2012). Eddy covariance. A practical guide to measurement and data analysis. Springer, Dordrecht, Heidelberg, London, New York, pp. 438. [online] URL: <http://books.google.com/books?id=8a2bJER5ZwC>
- Baldocchi DD (2003). Assessing the eddy covariance technique for evaluating carbon dioxide exchange rates of ecosystems: past, present and future. *Global Change Biology* 9: 479-492. - doi: [10.1046/j.1365-2486.2003.00629.x](https://doi.org/10.1046/j.1365-2486.2003.00629.x)
- Bonan GB (2008). Forests and climate change: forcings, feedbacks, and the climate benefits of forests. *Science* 320 (5882): 1444-1449. - doi: [10.1126/science.1155121](https://doi.org/10.1126/science.1155121)
- Cai T, Price DT, Orchansky AL, Thomas BR (2011). Carbon, water, and energy exchanges of a hybrid poplar plantation during the first five years following planting. *Ecosystems* 14 (4): 658-671. - doi: [10.1007/s10021-011-9436-8](https://doi.org/10.1007/s10021-011-9436-8)
- Chambers JQ, Higuchi N, Schimel JP, Ferreira LV, Melack JM (2000). Decomposition and carbon cycling of dead trees in tropical forests of the central Amazon. *Oecologia* 122: 380-388. - doi: [10.1007/s004420050044](https://doi.org/10.1007/s004420050044)
- Coursolle C, Margolis HA, Barr AG, Black TA, Amiro BD, McCaughey JH, Flanagan LB, Lafleur PM, Roulet NT, Bourque CPA, Arain MA, Wofsy SC, Dunn A, Morgenstern K, Orchansky AL, Bernier PY, Chen JM, Kidston J, Saigusa N, Hedstrom N (2006). Late-summer carbon fluxes from Canadian forests and peatlands along an east-west continental transect. *Canadian Journal of Forest Research* 36 (3): 783-800. - doi: [10.1139/x05-270](https://doi.org/10.1139/x05-270)
- Covington WW (1981). Changes in forest floor organic matter and nutrient content following clear cutting in northern hardwoods. *Ecology* 62: 41-48. - doi: [10.2307/1936666](https://doi.org/10.2307/1936666)
- Curtis PS, Hanson PJ, Bolstad P, Barford C, Randolph JC, Schmid HP, Wilson KB (2002). Biometric and eddy-covariance based estimates of ecosystem carbon storage in five eastern North American deciduous forests. *Agricultural and Forest Meteorology* 113: 3-19. - doi: [10.1016/S0168-1923\(02\)00099-0](https://doi.org/10.1016/S0168-1923(02)00099-0)
- Falge E, Baldocchi D, Olson R, Anthoni P, Aubinet M, Bernhofer C, Burba G, Ceulemans G, Clement R, Dolman H, Granier A, Gross P, Grünwald T, Hollinger D, Jensen NO, Katul G, Keronen P, Kowalski A, Lai CT, Law BE, Meyers T, Moncrieff J, Moors E, Munger JW, Pilegaard K, Rannik U, Rebmann C, Suyker A, Tenhunen J, Tu K, Verma S, Vesala T, Wilson K, Wofsy S (2001). Gap filling strategies for long term energy flux data sets. *Agricultural and Forest Meteorology* 107: 71-77. - doi: [10.1016/S0168-1923\(00\)00235-5](https://doi.org/10.1016/S0168-1923(00)00235-5)
- Foken T (2008). *Micrometeorology*. Springer, Berlin, Germany, pp. 908. - doi: [10.1007/978-3-540-74666-9](https://doi.org/10.1007/978-3-540-74666-9)
- Goldstein A, Hultman N, Fracheboud J, Bauer M, Panek J, Xu M, Qi Y, Guenther AB, Baugh WM (2000). Effects of climate variability on the carbon dioxide, water, and sensible heat fluxes above a ponderosa pine plantation in the Sierra Nevada (CA). *Agricultural and Forest Meteorology* 101: 113-129. - doi: [10.1016/S0168-1923\(99\)00168-9](https://doi.org/10.1016/S0168-1923(99)00168-9)
- Hagemann U, Moroni MT, Gleibner J, Makeschin F (2010). Disturbance history influences downed woody debris and soil respiration. *Forest Ecology and Management* 260 (10): 1762-1772. - doi: [10.1016/j.foreco.2010.08.018](https://doi.org/10.1016/j.foreco.2010.08.018)
- Hollinger DY, Richardson AD (2005). Uncertainty in eddy covariance measurements and its application to physiological models. *Tree Physiology* 25: 873-885. - doi: [10.1093/treephys/25.7.873](https://doi.org/10.1093/treephys/25.7.873)
- Hsieh CI, Katul G, Chi T (2000). An approximate analytical model for footprint estimation of scalar fluxes in thermally stratified atmospheric flows. *Advances in Water Resources* 23: 765-772. - doi: [10.1016/S0309-1708\(99\)00042-1](https://doi.org/10.1016/S0309-1708(99)00042-1)
- IPCC (2014). *Climate change 2014: Mitigation of climate change. Contribution of Working Group III to the Fifth Assessment Report of the Intergovernmental Panel on Climate Change* (Edenhofer O, Pichs-Madruga R, Sokona Y, Farahani E, Kadner S, Seyboth K, Adler A, Baum I, Brunner S, Eickemeier P, Kriemann B, Savolainen J, Schlömer S, von Stechow C, Zwickel T, Minx JC eds.). Cambridge University Press, Cambridge, United Kingdom and New York, NY, pp. 1435.
- Kaimal JC, Wyngaard JC, Izumi Y, Cote OR (1972). Spectral characteristics of surface-layer turbulence. *Quarterly Journal of The Royal Meteorological Society* 98: 563-589. - doi: [10.1002/qj.49709841707](https://doi.org/10.1002/qj.49709841707)
- Korkanç SY (2014). Effects of afforestation on soil organic carbon and other soil properties. *Catena* 123: 62-69. - doi: [10.1016/j.catena.2014.07.009](https://doi.org/10.1016/j.catena.2014.07.009)
- Law BE, Thornton PE, Irvine J, Anthoni PM, Van Tuyl S (2001). Carbon storage and fluxes in ponderosa pine forests at different developmental stages. *Global Change Biology* 7 (7): 755-777. - doi: [10.1046/j.1354-1013.2001.00439.x](https://doi.org/10.1046/j.1354-1013.2001.00439.x)
- Liu H, Peters G, Foken T (2001). New equations for sonic temperature variance and buoyancy heat flux with an omnidirectional sonic anemometer. *Boundary-Layer Meteorology* 100: 459-468. - doi: [10.1023/A:1019207031397](https://doi.org/10.1023/A:1019207031397)
- Lloyd J, Taylor JA (1994). On the temperature dependence of soil respiration. *Functional Ecology* 8: 315-323. - doi: [10.2307/2389824](https://doi.org/10.2307/2389824)
- Marino C, Manca G, Matteucci G, Scarascia Mugnozza G (2005). Climate change in the Mediterranean basin: a case study on carbon cycle in a forest of southern Italy. *Forest@ - Rivista di Selvicoltura ed Ecologia Forestale* 2 (1): 52-65. [in Italian with English summary] - doi: [10.3832/efor0259-0020052](https://doi.org/10.3832/efor0259-0020052)
- Massman WJ (2000). A simple method for estimating frequency response corrections for eddy covariance systems. *Agricultural and Forest Meteorology* 104: 185-198. - doi: [10.1016/S0168-1923\(00\)00164-7](https://doi.org/10.1016/S0168-1923(00)00164-7)
- Massman W, Clement R (2004). Uncertainty in eddy covariance flux estimates resulting from spectral attenuation. In: "Handbook of Micrometeorology: A Guide for Surface Flux Measurement and Analysis" (Lee X, Massman WJ, Law E eds). Kluwer, Dordrecht, Netherlands, pp. 67-100. - doi: [10.1007/1-4020-2265-4\\_4](https://doi.org/10.1007/1-4020-2265-4_4)
- McKinley SC, Ryan MG, Birdsey RA, Giardina CP, Harmon ME, Heath LS, Houghton RA, Jackson RB, Morrison JF, Murray BC, Pataki DE, Skog KE (2011). A synthesis of current knowledge on forest and carbon storage in the United States. *Ecological Applications* 21 (6): 1902-1924. - doi: [10.1890/10-0697.1](https://doi.org/10.1890/10-0697.1)
- Moffat AM, Papale D, Reichstein M, Hollinger D, Richardson AD, Barr AG, Beckstein C, Braswell BH, Churkina G, Desai AR, Falge E, Gove JH, Heimann M, Hui D, Jarvis AJ, Kattge J, Noormets A, Staud V (2007). Comprehensive comparison of gap-filling techniques for eddy covariance net carbon fluxes. *Agricultural and Forest Meteorology* 147: 209-232. - doi: [10.1016/](https://doi.org/10.1016/)

[j.agrformet.2007.08.011](#)

- Moncrieff JB, Massheder JM, De Bruin H, Elbers J, Friborg T, Heusinkveld B, Kabat P, Scott S, Sogaard H, Verhoef A (1997). A system to measure surface fluxes of momentum, sensible heat, water vapour and carbon dioxide. *Journal of Hydrology* 188-189: 589-611. - doi: [10.1016/S022-1694\(96\)03194-0](#)
- Moore CJ (1986). Frequency response corrections for eddy correlation systems. *Boundary-Layer Meteorology* 37: 17-35. - doi: [10.1007/BF0122754](#)
- Nabuurs GJ, Masera O, Andrasko K, Benitez-Ponce P, Boer R, Dutschke M, Elsiddig E, Ford-Robertson J, Frumhoff P, Karjalainen T, Krankina O, Kurz WA, Matsumoto M, Oyhantcabal W, Ravindranath NH, Sanz Sanchez MJ, Zhang X (2007). Forestry. In "Climate Change 2007: Mitigation. Contribution of Working Group III to the Fourth Assessment Report of the Intergovernmental Panel on Climate Change" (Metz B, Davidson OR, Bosch PR, Dave R, Meyer LA eds). Cambridge University Press, Cambridge, United Kingdom and New York. NY, USA, pp. 584.
- Noormets A, Chen J, Crow TR (2007). Age-dependent changes in ecosystem carbon fluxes in managed forests in northern Wisconsin, USA. *Ecosystems* 10: 187-203. - doi: [10.1007/s10021-007-9018-y](#)
- Noormets A, McNulty SG, Domec JC, Gavazzi M, Sun G, King JS (2012). The role of harvest residue in rotation cycle carbon balance in loblolly pine plantations. Respiration partitioning approach. *Global Change Biology* 18 (10): 3186-3201. - doi: [10.1111/j.1365-2486.2012.02776.x](#)
- Nosetto MD, Jobbágy EG, Brizuela AB, Jackson RB (2012). The hydrological consequences of land cover change in central Argentina. *Agriculture, Ecosystems and Environment* 154: 2-11. - doi: [10.1016/j.agee.2011.01.008](#)
- Paul KI, Polglase PJ, Nyakuengama JG, Khanna PK (2002). Change in soil carbon following afforestation. *Forest Ecology and Management* 168: 241-257. - doi: [10.1016/S0378-1127\(01\)00740-X](#)
- Paul KI, Polglase PJ, Richards GP (2003). Predicted change in soil carbon following afforestation or reforestation, and analysis of controlling factors by linking a C accounting model (CAMFor) to models of forest growth (3PG), litter decomposition (GENDEC) and soil C turnover (RothC). *Forest Ecology and Management* 177 (1-3): 485-501. - doi: [10.1016/S0378-1127\(02\)00454-1](#)
- Peichl M, Arain MA, Ullah S, Moore TR (2010). Carbon dioxide, methane, and nitrous oxide exchanges in an age-sequence of temperate pine forests. *Global Change Biology* 16: 2198-2212. - doi: [10.1111/j.1365-2486.2009.02066.x](#)
- Reichstein M, Falge E, Baldocchi D, Papale D, Valentini R, Aubinet M, Berbigier P, Bernhofer C, Buchmann N, Gilmanov T, Granier A, Grünwald T, Havránková K, Janous D, Knohl A, Laurila T, Lohila A, Loustau D, Matteucci G, Meyers T, Miglietta F, Ourcival J-M, Rambal S, Rotenberg E, Sanz M, Tenhunen J, Seufert G, Vaccari F, Vesala T, Yakir D (2005). On the separation of net ecosystem exchange into assimilation and ecosystem respiration: review and improved algorithm. *Global Change Biology* 11: 1424-1439. - doi: [10.1111/j.1365-2486.2005.001002.x](#)
- Sabine CL, Feely RA, Gruber N, Key RM, Lee K, Bullister JL, Wanninkhof R, Wong CS, Wallace DW, Tilbrook B, Millero FJ, Peng TH, Kozyr A, Ono T, Rios AF (2004). The oceanic sink for anthropogenic CO<sub>2</sub>. *Science* 305 (5682): 367-371. - doi: [10.1126/science.1097403](#)
- Schmid HP (1994). Source areas for scalars and scalar fluxes. *Boundary-Layer Meteorology* 67: 293-318. - doi: [10.1007/BF00713146](#)
- Schotanus P, Nieuwstadt FTM, De Bruin HAR (1983). Temperature measurement with a sonic anemometer and its application to heat and moisture fluxes. *Boundary-Layer Meteorology* 26: 81-93. - doi: [10.1007/BF00164332](#)
- Shvidenko A, Nilsson S, Roshkov V (1997). Possibilities for increased carbon sequestration through the implementation of rational forest management in Russia. *Water Air and Soil Pollution* 94: 137-162. - doi: [10.1007/BF02407099](#)
- Strengers BJ, Müller C, Schaeffer M, Haarsma RJ, Severijns C, Gerten D, Schaphoff S, Van Den Houdt R, Oostenrijk R (2010). Assessing 20<sup>th</sup> century climate-vegetation feedbacks of land-use change and natural vegetation dynamics in a fully coupled vegetation-climate model. *International Journal of Climatology* 30: 2055-2065. - doi: [10.1002/joc.2132](#)
- Toland DE, Zak DR (1994). Seasonal patterns of soil respiration in intact and clear-cut northern hardwood forest. *Canadian Journal of Forest Research* 24 (8): 1711-1716. - doi: [10.1139/x94-221](#)
- Voltaire A (2006). Quantifying the impact of future land-use changes against increases in GHG concentrations. *Geophysical Research Letters* 33: 1-4. L04701. - doi: [10.1029/2005GL024354](#)
- Webb EK, Pearman GI, Leuning R (1980). Correction of flux measurements for density effects due to heat and water vapour transfer. *Quarterly Journal of the Royal Meteorological Society* 106: 85-100. - doi: [10.1002/qj.49710644707](#)
- Wilczak JM, Oncley SP, Page SA (2001). Sonic anemometer tilt correction algorithms. *Boundary-layer meteorology* 99: 127-150. - doi: [10.1023/A:1018966204465](#)
- Yanai RD, Currie WS, Goodale CL (2003). Soil carbon dynamics after forest harvest: an ecosystem paradigm reconsidered. *Ecosystems* 6: 197-212. - doi: [10.1007/s10021-002-0206-5](#)