






## IFNG-mediated immune responses enhance autophagy against *Mycobacterium tuberculosis* antigens in patients with active tuberculosis

Ana I Rovetta, Delfina Peña, Rodrigo E Hernández Del Pino, Gabriela M Recalde, Joaquín Pellegrini, Fabiana Bigi, Rosa M Musella, Domingo J Palmero, Marisa Gutierrez, María I Colombo & Verónica E García


To cite this article: Ana I Rovetta, Delfina Peña, Rodrigo E Hernández Del Pino, Gabriela M Recalde, Joaquín Pellegrini, Fabiana Bigi, Rosa M Musella, Domingo J Palmero, Marisa Gutierrez, María I Colombo & Verónica E García (2014) IFNG-mediated immune responses enhance autophagy against *Mycobacterium tuberculosis* antigens in patients with active tuberculosis, *Autophagy*, 10:12, 2109-2121, DOI: [10.4161/15548627.2014.981791](https://doi.org/10.4161/15548627.2014.981791)

To link to this article: <https://doi.org/10.4161/15548627.2014.981791>



 View supplementary material 

 Accepted author version posted online: 26 Nov 2014.  
Published online: 26 Nov 2014.

 Submit your article to this journal 

 Article views: 977

 View Crossmark data 

 Citing articles: 16 View citing articles 

# IFNG-mediated immune responses enhance autophagy against *Mycobacterium tuberculosis* antigens in patients with active tuberculosis

Ana I Rovetta,<sup>1,2</sup> Delfina Peña,<sup>1,2</sup> Rodrigo E Hernández Del Pino,<sup>1</sup> Gabriela M Recalde,<sup>3</sup> Joaquín Pellegrini,<sup>1,2</sup> Fabiana Bigi,<sup>4</sup> Rosa M Musella,<sup>5</sup> Domingo J Palmero,<sup>5</sup> Marisa Gutierrez,<sup>6</sup> María I Colombo,<sup>3,†,\*</sup> and Verónica E García,<sup>1,2,†,\*</sup>

<sup>1</sup>Departamento de Química Biológica; Facultad de Ciencias Exactas y Naturales; Universidad de Buenos Aires (UBA); Buenos Aires, Argentina; <sup>2</sup>Instituto de Química Biológica de la Facultad de Ciencias Exactas y Naturales (QUIBICEN) UBA-CONICET; Buenos Aires, Argentina; <sup>3</sup>Instituto de Histología y Embriología de Mendoza, Facultad de Ciencias Médicas, Universidad Nacional de Cuyo-CONICET; Mendoza; Argentina; <sup>4</sup>Instituto de Biotecnología; CICVyA – INTA, N. Repetto and De los Reseros, Argentina; <sup>5</sup>División Tisiopneumología Hospital F.J. Muñiz; Buenos Aires; Argentina; <sup>6</sup>Sección Bacteriología de la Tuberculosis, Hospital General De Agudos. E. Tornú; Buenos Aires; Argentina

<sup>†</sup>Share senior authorship for this work.

**Keywords:** autophagy, cytokines, defense, IFNG, immune response, patients, tuberculosis

**Abbreviations:** AG, antigen; ATG, autophagy-related; FBS, fetal bovine serum; GAPDH, glyceraldehyde-3-phosphate dehydrogenase; GTP, guanosine triphosphate; HD, healthy donors; HR TB, high-responder tuberculosis patient; IFNG, interferon gamma; IL, Interleukin; LC3, microtubule-associated protein 1A/1B-light chain 3; LR TB, low-responder tuberculosis patients; mAb, monoclonal antibody; *Mtb*-Ag, *Mycobacterium tuberculosis* antigen; PBS, phosphate-buffered saline; PBMC, peripheral blood mononuclear cells; rIFNG, recombinant IFNG; SLAM, signaling lymphocytic activation molecule; TB, tuberculosis; Th, T helper.

Protective immunity against *Mycobacterium tuberculosis* (*Mtb*) requires IFNG. Besides, IFNG-mediated induction of autophagy suppresses survival of virulent *Mtb* in macrophage cell lines. We investigated the contribution of autophagy to the defense against *Mtb* antigen (*Mtb*-Ag) in cells from tuberculosis patients and healthy donors (HD). Patients were classified as high responders (HR) if their T cells produced significant IFNG against *Mtb*-Ag; and low responders (LR) when patients showed weak or no T cell responses to *Mtb*-Ag. The highest autophagy levels were detected in HD cells whereas the lowest quantities were observed in LR patients. Interestingly, upon *Mtb*-Ag stimulation, we detected a positive correlation between IFNG and MAP1LC3B-II/LC3-II levels. Actually, blockage of *Mtb*-Ag-induced IFNG markedly reduced autophagy in HR patients whereas addition of limited amounts of IFNG significantly increased autophagy in LR patients. Therefore, autophagy collaborates with human immune responses against *Mtb* in close association with specific IFNG secreted against the pathogen.

## Introduction

The immune response elicited after *M. tuberculosis* infection is critically dependent on CD4<sup>+</sup> T cells. In particular, T helper (Th) 1 cells play an important role in granuloma formation and clearance of *M. tuberculosis*.<sup>1–3</sup> In fact, deficiencies in the IL12 (interleukin 12)-IFNG (interferon gamma)-STAT1 (signal transducer and activator of transcription 1, 91kDa) signaling pathway lead to the dissemination of mycobacterial infections.<sup>4,5</sup> The degree of reduction in IFNG production by peripheral blood mononuclear cells (PBMC) is a marker of disease severity in patients with tuberculosis;<sup>6</sup> therefore IFNG secretion is lower in patients with the most severe manifestation of tuberculosis.<sup>6</sup> Thus, elucidation of the cellular mechanisms affected by reduced IFNG production in individuals that develop the disease will enhance our knowledge of the pathogenesis of tuberculosis,

contributing to a better understanding of the immune response to this intracellular pathogen.

IFNG, a cytokine produced primarily by T cells and natural killer cells, is an important mediator of macrophage activation in controlling several intracellular pathogens, including mycobacteria.<sup>2</sup> Injection of recombinant IFNG into lesions of lepromatous leprosy patients results in the migration of large numbers of Th cells and monocytes to the site of injection<sup>7,8</sup> and a decrease in acid-fast bacilli load.<sup>7</sup> IFNG has many effects, including induction of autophagy.<sup>9</sup> In fact, IFNG increases proteolysis of long-lived proteins and processing of MAP1LC3/LC3 (microtubule-associated protein 1A/1B-light chain 3) (i.e., punctate distribution), both hallmarks of autophagy induction.<sup>10,11</sup> Upon induction of autophagy, LC3-I is converted to LC3-II through lipidation by a system involving ATG7 (autophagy-related 7) and ATG3, which

\*Correspondence to: Verónica E García; Email: vgarcia@qb.fcen.uba.ar; María I Colombo; Email: mcolombo@fcm.uncu.edu.ar

Submitted: 01/16/2014; Revised: 10/01/2014; Accepted: 10/06/2014

<http://dx.doi.org/10.4161/15548627.2014.981791>

then allows LC3 to associate with autophagic vesicles.<sup>12</sup> Thus, both LC3 presence in autophagosomes and its conversion to the lower migrating form, LC3-II, are commonly used indicators of autophagy.<sup>13</sup> Interestingly, a polymorphism on *IRGM1* (immunity-related GTPase family M member 1), an autophagy-related gene downstream of the *Ifng*<sup>14</sup> gene, has been associated with protection against *M. tuberculosis*.<sup>15,16</sup> In a more recent work, another gene family of the IFNG inducible GTPases has been described, which comprises the guanylate-binding proteins.<sup>17</sup> It has been shown that members of this family interact with autophagy-related (ATG) proteins, establishing a link between this family of GTPases and autophagy-mediated defense mechanisms against invading pathogens.

Previously it has been shown that induction of autophagy promotes maturation of *Mycobacterium*-containing phagosomes and concomitantly suppresses mycobacterial survival.<sup>10</sup> Besides, it has been demonstrated that activation of RAW 264.7 cells with IFNG induces autophagic activation.<sup>10</sup> Moreover, Harris et al. have demonstrated that Th2 cytokines (IL4 and IL13) abrogate autophagy and autophagy-mediated killing of intracellular mycobacteria in human U937 or THP-1 cells.<sup>9</sup> Thus, critical cytokines modulate both positively and negatively the autophagic response affecting mycobacterial survival.

Most of the studies about the role of autophagy as a defense mechanism against *Mycobacterium* have been performed using cell lines infected with the pathogen or primary culture cells. However, very limited information exists about the autophagic response in patients with active tuberculosis disease. Therefore, in this work we investigated the potential role of autophagy during the human immune response against *M. tuberculosis* antigens. To this end, we studied *M. tuberculosis*-induced autophagy in 2 populations of patients with active disease previously identified by our laboratory.<sup>18</sup> These 2 groups of individuals were classified based on their T-cell responses to the bacterium: High-responder (HR) tuberculosis patients displayed significant *M. tuberculosis*-dependent T-cell proliferation and IFNG production, while low-responder (LR) tuberculosis patients displayed weak or no T-cell responses to *M. tuberculosis*.<sup>18</sup> On the basis of the magnitude of the immune response of these 2 groups of patients against the pathogen, we hypothesized that IFNG produced by T cells might increase the autophagic response in human monocytes. In fact, we showed that sonicated *M. tuberculosis* (*Mtb*-Ag) induced the highest levels of autophagy in healthy donors and the lowest levels in LR tuberculosis patients, in direct association with the amounts of IFNG secreted by each individual. Interestingly, addition of IFNG augmented autophagy in patients with the weakest production of IFNG against the bacteria. Together, our present data indicate that autophagy is being modulated by the innate and adaptive immune response of the human host against *M. tuberculosis*. To our knowledge, this is the first study that establishes a link between autophagy and IFNG production in cells obtained from tuberculosis patients.

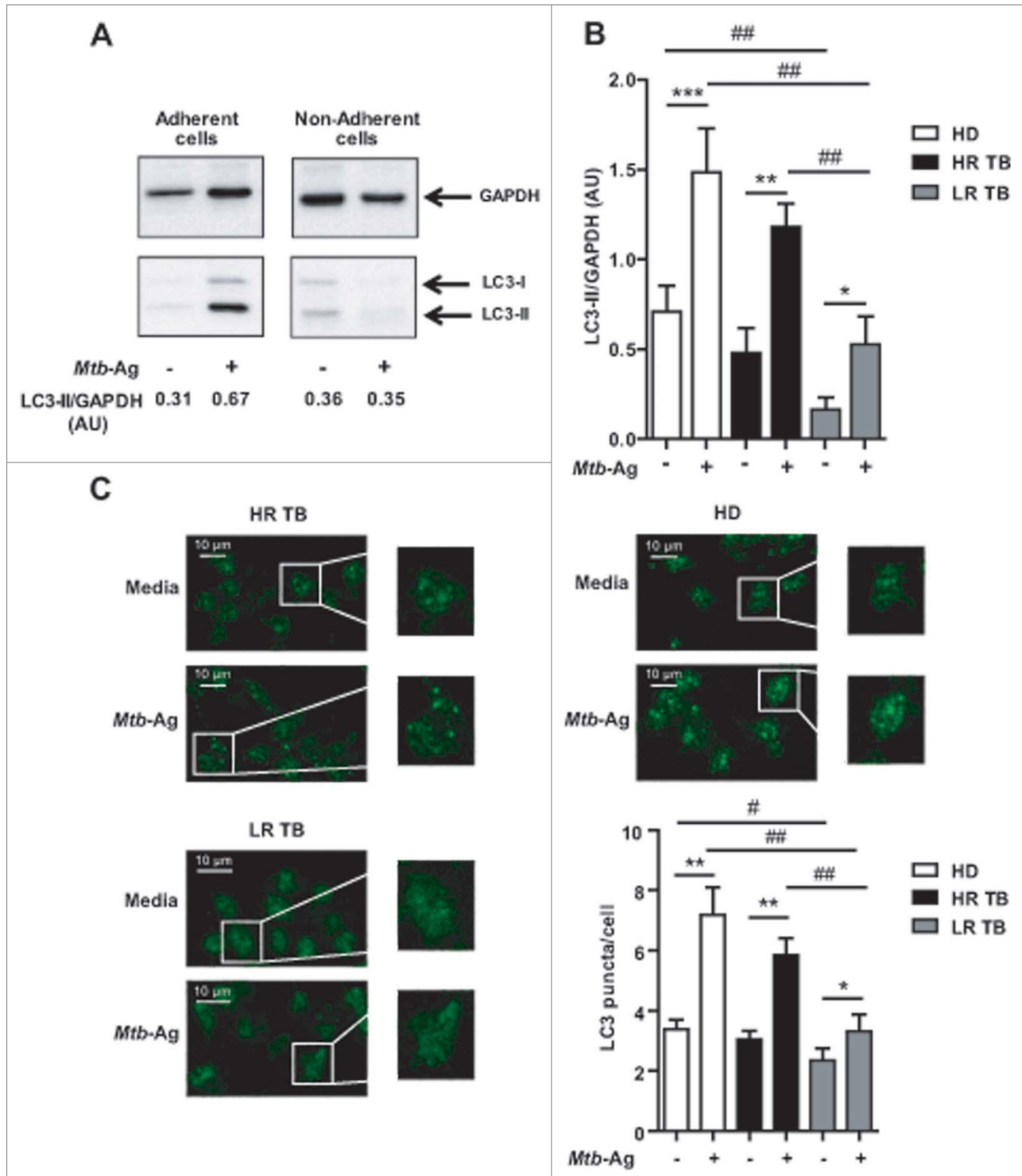
## Results

### *M. tuberculosis* antigen induces significantly lower autophagy levels in tuberculosis patients with the poorest immune response against the pathogen

Studies in human cell lines and in mice have shown that autophagy is a defense mechanism that inhibits mycobacterial survival.<sup>10,19</sup> Furthermore, it has been recently demonstrated that the virulent *M. tuberculosis* strain H37Rv is able to inhibit basal autophagy in human macrophages and dendritic cells.<sup>20</sup> In order to analyze the role of autophagy in the defense of the human host against *M. tuberculosis*, we investigated this process in healthy donors and patients with active disease. To do this, peripheral blood mononuclear cells (PBMC) were cultured during 16 h without stimulus. The cells were then incubated with sonicated *M. tuberculosis* antigen (*Mtb*-Ag) for 24 h and the levels of the autophagic marker LC3, were assessed by western blotting. As shown in **Figure 1A**, endogenous levels of LC3-II accumulated upon *Mtb*-Ag stimulation of adherent cells from a high-responder tuberculosis patient. In contrast, no detectable levels of LC3-II were observed in the nonadherent fraction of the PBMC. These data suggested that *Mtb*-Ag-induced autophagic response was occurring in monocytic cells. Densitometry of the blots showed that the amount of LC3-II was significantly increased in *Mtb*-Ag-treated cells obtained from healthy donors (HD) and tuberculosis patients, as compared to nonstimulated cells (**Fig. 1B**). However, both HD and HR patients showed significantly higher amounts of LC3-II as compared to LR patients (**Fig. 1B**). Furthermore, we detected marked differences between the basal levels of LC3-II in cells from HD as compared to LR tuberculosis patients (**Fig. 1B**).

To assess the rate of autophagy we determined the autophagic flux in the absence or presence of bafilomycin A<sub>1</sub> (BafA1), which inhibits vacuolar-type H<sup>+</sup>-ATPases and prevents fusion between autophagosomes and lysosomes, leading to inhibition of LC3-II degradation.<sup>21</sup> Thus, the LC3-II levels upon exposure of the cells to the *Mtb*-Ag preparation in the presence or absence of BafA1 were analyzed. We observed that, in adherent cells, *Mtb*-Ag increased LC3-II puncta levels significantly in the presence of BafA1, strongly suggesting that this antigen induced autophagosome formation and that the autophagic pathway was functional (**Fig. S1**). Similar results were observed by protein gel blot and flow cytometry (data not shown).

To further analyze the ability of human monocytes to undergo autophagy in response to *Mtb*-Ag, cells from tuberculosis patients and HD were cultured in the presence of the antigen for 24 h to induce the autophagic process. After fixation, cells were labeled with antibodies recognizing endogenous LC3 and the samples were analyzed by confocal microscopy. LC3 is a useful marker of autophagy by immunofluorescence, as it gets conjugated to autophagic membranes when autophagy is induced, thus forming puncta in the cytosol. As shown in **Figure 1C**, in LR tuberculosis patients, only a few LC3 puncta could be detected in Ag-stimulated cells (**Fig. 1C**). In contrast, in HD and HR tuberculosis patients, LC3 puncta accumulated strongly when *Mtb*-Ag was added to the culture medium (**Fig. 1C**). Moreover, quantification



**Figure 1. Levels of autophagy induced in response to *Mtb*-Ag in tuberculosis patients and healthy donors. (A and B)** PBMC from HD, HR TB and LR TB were cultured at  $3 \times 10^6$  cells/ml in RPMI with 10% FBS. Cells were then cultivated for 16 h without stimulus to allow the adherence of monocytes. Afterwards, PBMC were stimulated with sonicated *M. tuberculosis* (*Mtb*-Ag) for 24 h, protein extracts were obtained and western blot was performed. Densitometry of the blots was performed and the means of the ratios of LC3-II to GAPDH were expressed as arbitrary units (AU). (A) A representative example of a HR TB patient is shown. (B) Bars represent the mean values  $\pm$  SEM. \* $P < 0.05$ , \*\* $P < 0.01$ , \*\*\* $P < 0.001$ , Wilcoxon matched-pairs signed rank test; # $P < 0.05$ , ## $P < 0.01$  Mann-Whitney Test. (C) PBMC from HD and HR TB and LR TB patients were incubated at  $2 \times 10^6$  cells/ml in RPMI with 10% FBS. PBMC were then stimulated with or without *Mtb*-Ag for 24 h and immunofluorescence for LC3 was performed. Samples were then analyzed in a confocal microscope. Representative images of a HD, a HR TB, and a LR TB patient are shown. Bars represent the mean values of the number of LC3 puncta/cell  $\pm$  SEM. \* $P < 0.05$ , \*\* $P < 0.01$ , Wilcoxon matched-pairs signed rank test; ## $P < 0.01$  Mann-Whitney Test.

of the dots confirmed that *Mtb*-Ag induced significantly higher levels of autophagy in HD and HR patients as compared to LR individuals (Fig. 1C). Taken together, our results indicate that LR TB patients showed diminished autophagy in response to *Mtb*-Ag as compared to HR patients and HD.

#### ***M. tuberculosis* antigen induces autophagy in CD14<sup>+</sup> cells from patients with active disease**

As shown above, *Mtb*-Ag induced autophagy in the adherent cell fraction of PBMC (Fig. 1). Thus, in order to confirm that the autophagic response specifically occurred in monocytes (i.e., CD14<sup>+</sup> cells) from tuberculosis patients and HD, we next measured intracellular saponin-resistant LC3-II by FACS, as previously described.<sup>22</sup> As shown in Figure 2, few LC3-II-positive (LC3<sup>+</sup>) monocytes were detected among cells cultured with media (controls). However, incubation with *Mtb*-Ag significantly augmented the percentage of CD14<sup>+</sup>LC3<sup>+</sup> cells in tuberculosis patients and HD (Fig. 2), in agreement with our findings shown by western blot (Fig. 1A). Nevertheless, we detected significantly lower numbers of CD14<sup>+</sup> LC3<sup>+</sup> cells in LR tuberculosis patients as compared to HR patients and HD (Fig. 2). To further characterize the autophagic response to *Mtb*-Ag in PBMC obtained from tuberculosis patients, we analyzed intracellular LC3-II not only in CD14<sup>+</sup> monocytes, but also in CD3<sup>+</sup> lymphocytes. Figure 2C shows that the autophagic response to *Mtb*-Ag is not a general response in all cell types, since it clearly affects CD14<sup>+</sup> monocyte cells but not CD3<sup>+</sup> T lymphocytes. Together, these findings demonstrate that *Mtb*-Ag induced autophagy in monocytes from patients with active tuberculosis, but the process is markedly reduced in CD14<sup>+</sup> cells from LR tuberculosis patients, individuals with weak immune responses against the pathogen.

#### **Autophagy levels correlate with endogenous *Mtb*-induced IFNG production**

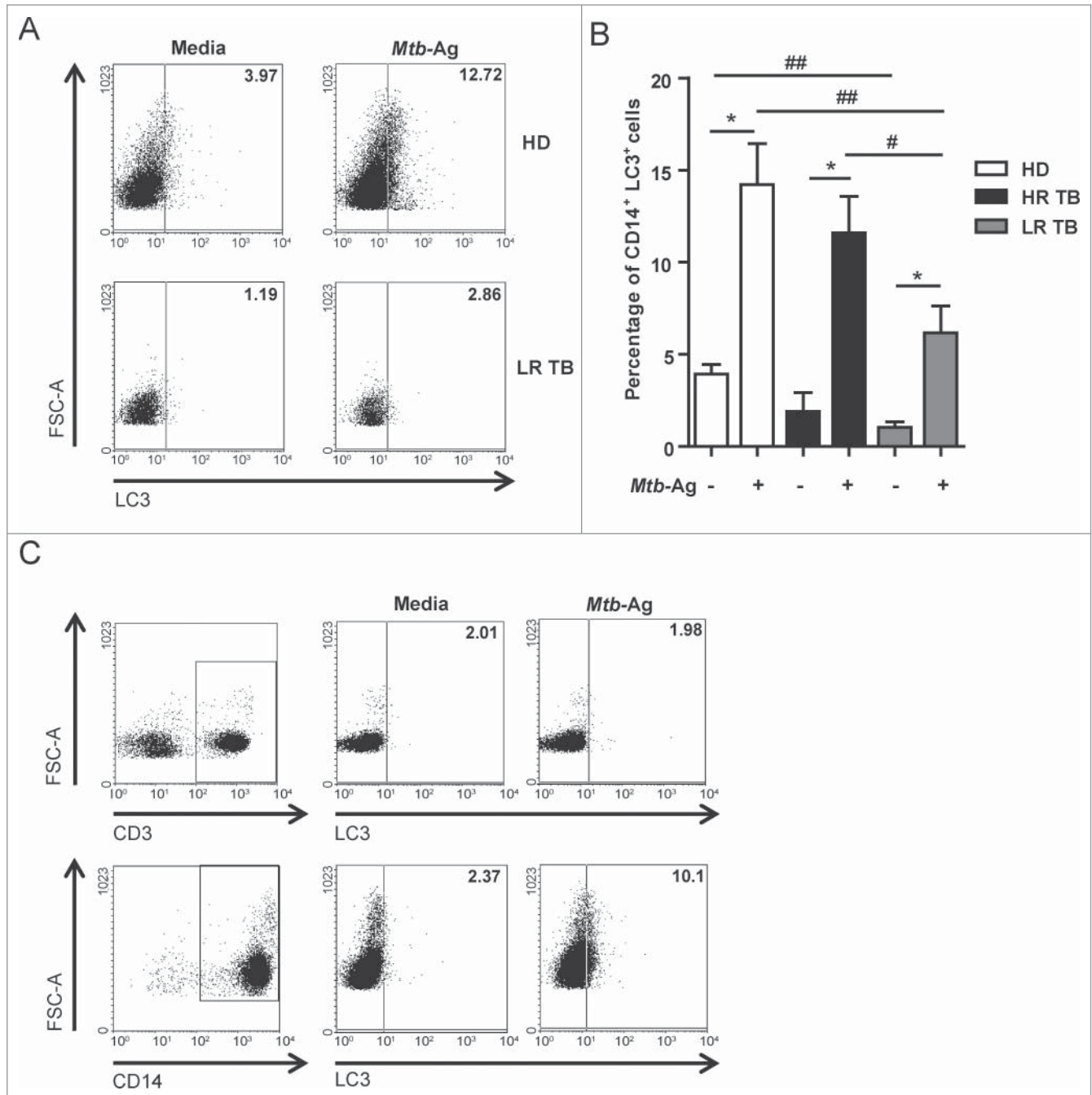
In view of our results (Figs. 1 and 2), we hypothesized that the immune response of the human host against *M. tuberculosis* might be related to the induction of autophagy. As mentioned before, HR and LR tuberculosis patients were classified according to their T cell responses against the antigen (*Mtb*-Ag). In particular, a pattern of considerable severity is detected in LR patients:<sup>23</sup> HR patients displayed significant IFNG production whereas LR tuberculosis patients exhibited low IFNG secretion. In fact, we have previously demonstrated that immunological features parallel common clinical parameters analyzed in patients with tuberculosis in Argentina: HR patients have significant higher percentages of total lymphocytes compared with LR patients; HR patients exhibit higher tuberculin skin test diameters than LR patients. In addition, LR individuals have severe pulmonary lesions, a striking loss of weight, and have been ill longer than HR individuals.<sup>18</sup> Recently, we have further expanded those studies by finding that the leukocyte count in tuberculosis patients correlates directly with the proportion of CD4<sup>+</sup> IFNG<sup>+</sup> lymphocytes and that elevated ratios of CD4<sup>+</sup> IFNG<sup>+</sup> are associated with shorter length of disease progression.<sup>23</sup> Therefore, we wondered whether the production of

IFNG in response to *Mtb*-Ag might influence the antigen-induced autophagic response.<sup>24-26</sup> Figure 3A shows the secretion of IFNG upon 24 h of *Mtb*-Ag-stimulation of PBMC from HD and tuberculosis patients. As expected, HR patients produced higher levels of antigen-induced IFNG in comparison to LR patients (mean *Mtb*-Ag-induced IFNG  $\pm$  SEM: 3,933  $\pm$  905.3 pg/ml HR group; 1,346  $\pm$  613.4 pg/ml LR group,  $P < 0.05$ , Mann Whitney Test) (Fig. 3A). Moreover, HD secreted the highest levels of IFNG in response to the antigen (mean *Mtb*-induced IFNG  $\pm$  SEM: 8,897  $\pm$  1,465 pg/ml) (Fig. 3A). In order to confirm that the levels of IFNG detected by ELISA (Fig. 3A) were secreted by T cells, we performed intracellular cytokine staining. Therefore, PBMC from HR and LR tuberculosis patients and HD were stimulated with *Mtb*-Ag and CD4<sup>+</sup> IFNG<sup>+</sup> lymphocytes were analyzed. As shown in Figure 3B, in LR tuberculosis patients, very low percentages of IFNG-secreting T lymphocytes were expanded by *Mtb*-Ag. In contrast, higher numbers of CD4<sup>+</sup> IFNG<sup>+</sup> T cells were observed in HR tuberculosis patients and HD as compared to LR patients (Fig. 3B). Furthermore, the percentages of specific *Mtb*-Ag induced IFNG producing cells in HR patients and HD were higher at 48 h as compared to 24 h, whereas no modification in the number of CD4<sup>+</sup> IFNG<sup>+</sup> lymphocytes was detected in LR patients at 48 h (Fig. 3B). We analyzed the percentage of CD4<sup>+</sup> IFNG<sup>+</sup> cells induced by *Mtb*-Ag at 24 h (as measured by ELISA, Fig. 3A) and at a later time (i.e., 48 h) to show the increase in IFNG producing lymphocytes over time. In fact, we previously demonstrated that in HR patients and HD, the highest numbers of CD4<sup>+</sup> IFNG<sup>+</sup> lymphocytes expanded by *Mtb*-Ag were detected after 4 d of Ag stimulation.<sup>27,28</sup> These findings demonstrate that at least one of the sources of IFNG generated in response to *Mtb*-Ag were CD4<sup>+</sup> T cells.

In agreement with our present and previous findings,<sup>18,27</sup> it has been reported that in most *M. tuberculosis*-infected persons who are healthy tuberculin reactors, their PBMC produce high concentrations of IFNG in response to the bacteria and they do not develop active disease. This clearly indicates that cell-mediated immunity controls the infection in most individuals.<sup>29</sup> In contrast, reduced IFNG production by PBMC is a marker of severe disease,<sup>30</sup> confirming the role of cell mediated immunity in protection against tuberculosis. As the levels of *Mtb*-Ag-induced IFNG represent a criterion for patient classification,<sup>18</sup> in the present work the probable correlation between the amount of secreted IFNG and the levels of autophagy was investigated. Our data indicated that there was a positive correlation between the levels of IFNG and the levels of LC3-II accumulated upon *Mtb*-Ag stimulation (Fig. 3B). Therefore, the present results indicate that endogenous *Mtb*-Ag-induced IFNG produced by the individual significantly influences the autophagic process in response to the antigen.

#### **Regulation of autophagy by *Mtb*-induced IFNG**

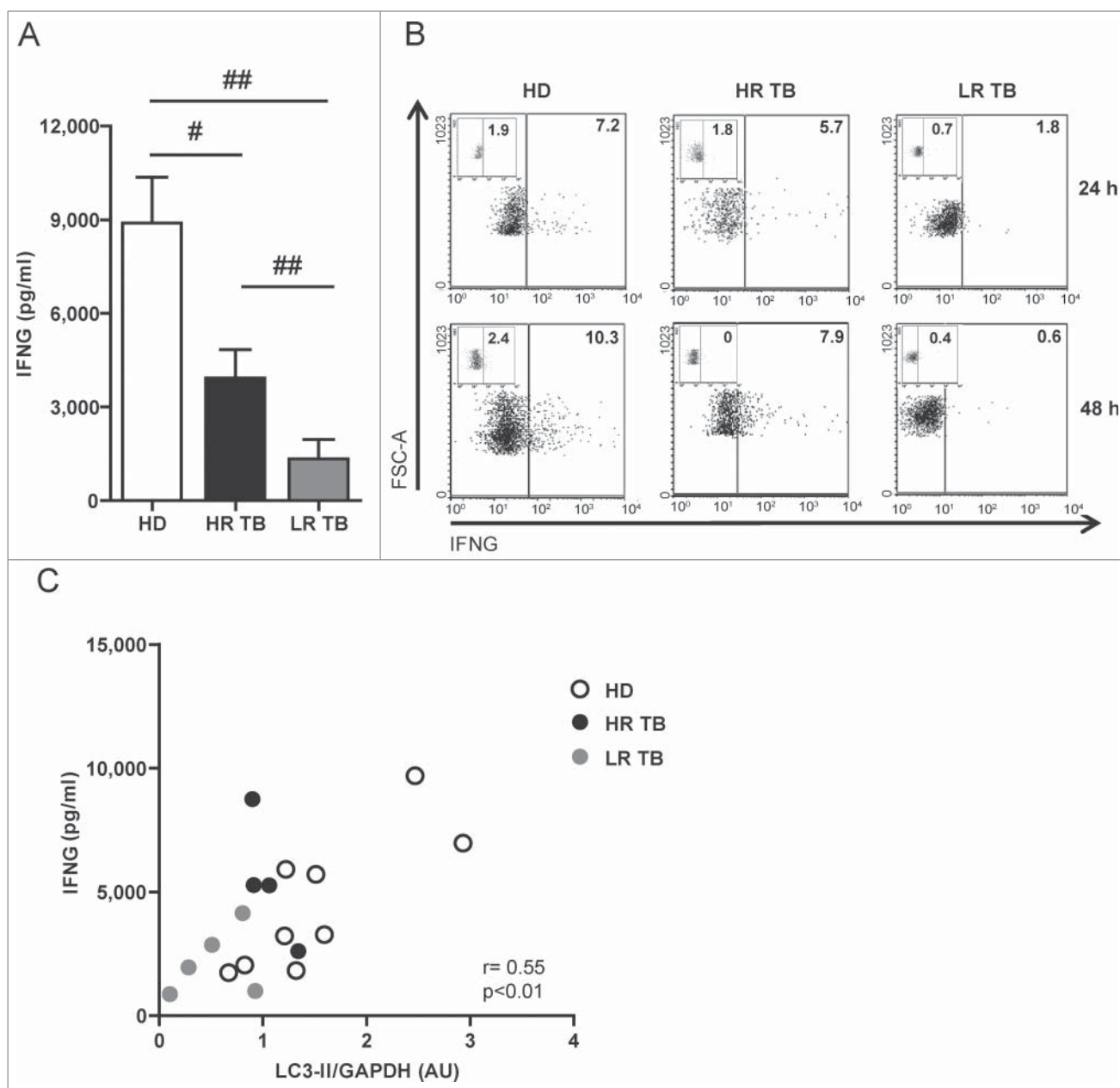
The results described above (Figs. 1 to 3) demonstrate that: i) *Mtb*-Ag-induced autophagy in cells from tuberculosis patients directly correlates with IFNG secretion upon antigen stimulation;



**Figure 2. *Mtb*-Ag induces autophagy in CD14<sup>+</sup> cells from tuberculosis patients and healthy donors.** PBMC from healthy donors (HD) and tuberculosis patients (TB) (High responders [HR TB] and low responders [LR TB]) were incubated at  $3 \times 10^6$  cells/ml in RPMI with 10% FBS. PBMC were stimulated with or without sonicated *M. tuberculosis* antigen (*Mtb*-Ag) for 24 h and intracellular saponin-resistant LC3 determination was performed on CD14<sup>+</sup> and/or CD3<sup>+</sup> cells by flow cytometry. (A) Dot plots were obtained first gating on monocytes by light scatter, then on CD14<sup>+</sup> cells and finally on LC3<sup>+</sup> cells. Representative dot plots from a HD and a LR TB are shown. (B) Bars represent the mean values of the percentage of CD14<sup>+</sup>LC3<sup>+</sup> cells  $\pm$  SEM. \* $P < 0.05$ , Wilcoxon matched-pairs signed rank test; # $P < 0.05$ , ## $P < 0.01$ , Mann-Whitney Test. (C) Intracellular LC3-II was determined by flow cytometry first gating on lymphocytes by light scatter and then gating on CD3<sup>+</sup> T cells (upper panel); or first gating on monocytes by light scatter and then on CD14<sup>+</sup> cells (lower panel). A representative dot plot from a HR tuberculosis patient is shown.

and ii) the autophagic response is lower in cells from the group of tuberculosis patients with weak cellular mediated immunity against the pathogen. To further define the relationship between IFNG production and autophagy, we studied the effect of a

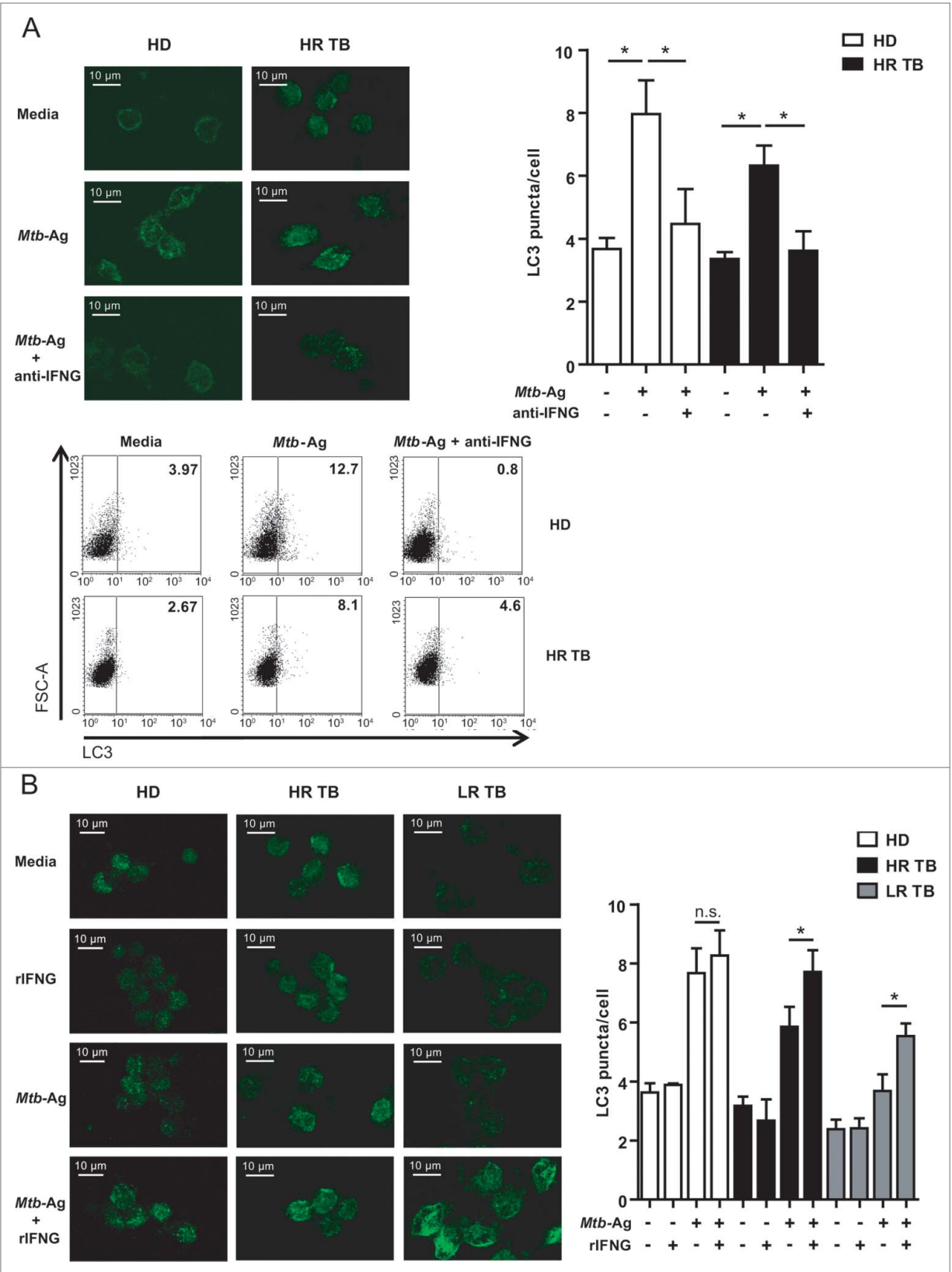
neutralizing anti-IFNG monoclonal antibody (mAb) on *Mtb*-Ag-induced autophagy in subjects that display strong immunity against the pathogen. Therefore, PBMC from HR patients and HD were stimulated with *Mtb*-Ag in the presence or absence of



**Figure 3. The levels of autophagy are directly correlated with the amount of IFNG secreted in response to *Mtb*-Ag.** PBMC from healthy donors (HD) and tuberculosis patients (TB) (High responders [HR TB] and low responders [LR TB]) were incubated at  $3 \times 10^6$  cells/ml in RPMI with 10% FBS. Cells were cultured for 16 h without stimulus to allow the adherence of monocytes. Then, PBMC were stimulated with sonicated *M. tuberculosis* (*Mtb*-Ag) for 24 and/or 48 h. (A) IFNG levels in *Mtb*-Ag-stimulated cell culture supernatant fractions assayed by ELISA after 24 h of incubation with *Mtb*-Ag. Bars represent the mean values  $\pm$  SEM. # $P < 0.05$ , ## $P < 0.01$ , Mann-Whitney Test. (B) PBMC from HR and LR TB patients and HD were stimulated with *Mtb*-Ag for 24 and 48 h, and then, IFNG production was determined by flow cytometry, first, gating on lymphocytes by light scatter and then, gating on CD4<sup>+</sup> T cells. A representative dot plot for each group is shown. Cells cultured with media (inset) are also shown. (C) After 24 h of *Mtb*-Ag stimulation, protein gel blot detection of LC3-II and GAPDH was performed from the proteins extracts by standard methods. Densitometry of the blots was then determined and the means of the ratio of LC3-II to GAPDH in each experimental condition were expressed as arbitrary units (AU). The results are represented as LC3-II/GAPDH in *Mtb*-Ag-stimulated cultures vs IFNG levels in *Mtb*-Ag-stimulated cell culture supernatant fractions. Correlation was analyzed by the Spearman r test.

neutralizing anti-IFNG mAb. LC3 puncta formation was analyzed by immunofluorescence and LC3-II levels were measured by flow cytometry. As shown in Figure 4A, autophagy induction in response to the antigen was markedly inhibited by anti-IFNG, as denoted by the few LC3 puncta detected in antigen-stimulated

cells treated with the blocking mAb. Moreover, in agreement with these results, incubation of PBMC with *Mtb*-Ag in the presence of anti-IFNG significantly decreased the percentage of CD14<sup>+</sup> LC3<sup>+</sup> monocyte cells in HR tuberculosis patients and HD (Fig. 4A). Thus, these findings suggest that *Mtb*-Ag-induced



**Figure 4.** For figure legend, see page 2116.



IFNG participates in the upregulation of the autophagic response against the antigen.

In view of the effect of the blockage of IFNG in HR tuberculosis patients, we next examined whether the levels of autophagy could be enhanced in cells from unresponsive tuberculosis patients (LR) through the addition of recombinant IFNG (rIFNG). To do this, PBMC from HD, HR, and LR patients were stimulated with *Mtb*-Ag in the presence or absence of rIFNG and, after 24 h, LC3 puncta formation was assayed. When added alone, rIFNG did not alter the distribution pattern of LC3 (Fig. 4B). In a previous publication it was demonstrated that addition of rIFNG alone increased the percentage of LC3-II<sup>+</sup> human monocytes.<sup>31</sup> However, it is important to mention that those studies employed 10 ng/ml of rIFNG, whereas a considerable lower concentration of the cytokine was used in our study (1.8 ng/ml). Interestingly, when cells from LR patients were stimulated with *Mtb*-Ag, rIFNG significantly increased LC3 puncta formation when compared with cells stimulated with *Mtb*-Ag alone (Fig. 4B). As expected, IFNG treatment also increased the accumulation of LC3 puncta on *Mtb*-Ag-stimulated cells from HR patients and HD (Fig. 4B). Furthermore, we have also observed that infection of PBMC with *M. tuberculosis* H37Rv strain induced notable levels of autophagy in HD and HR TB patients as compared to uninfected cells, which was further increased by the addition of rIFNG during infection (data not shown, manuscript in preparation). Therefore, our present results, together with the observation that anti-IFNG mAb blocked the ability of *Mtb*-Ag to upregulate the formation of LC3 puncta, indicate that the increase of the autophagy process in tuberculosis patients in response to *Mtb*-Ag is mediated by IFNG.

## Discussion

In the present report, we investigated the levels of autophagy, a process recognized to be regulated by cytokines,<sup>9,32</sup> in the context of tuberculosis, an infectious disease in which a Th1-like response is correlated with protection against *M. tuberculosis*.<sup>33</sup> Indeed, it has been demonstrated that T cells from patients with tuberculosis produce less IFNG than those from persons with latent *M. tuberculosis* infection.<sup>34</sup> Moreover, IFNG production is lower in patients with the most severe manifestation of tuberculosis.<sup>6,18</sup> In the present study, we found that *M. tuberculosis* antigen (*Mtb*-Ag) increased the conversion of the protein LC3 to the autophagosome-associated form LC3-II in healthy donors and tuberculosis patients. However, low-responder tuberculosis patients displayed the lowest levels of LC3-II, in direct association with the amounts of IFNG secreted by each group of

individuals. Moreover, our findings demonstrated that autophagy was specifically induced in CD14<sup>+</sup> cells. Besides, we showed that blockage of endogenous *Mtb*-Ag-induced IFNG decreased the autophagic response in HD and HR tuberculosis patients. Interestingly, when *Mtb*-Ag was added in the presence of limited amounts of exogenous rIFNG to cells from LR patients, the levels of endogenous LC3-II increased up to the levels detected in Ag-stimulated cells from HR patients. Together, our data indicate that autophagy in *Mtb*-Ag-stimulated monocytes is influenced and regulated by Th1 responses against the pathogen, denoting the importance of host cell mediated immunity in tuberculosis.

Studies by other authors have suggested that IFNG levels do not correlate with protection. For example, Hoft et al. report a lack of correlation between IFNG production and intracellular killing of mycobacteria.<sup>35</sup> Moreover, Elias et al. state that the magnitude of in vitro purified protein derivative-specific IFNG production assessed during the course of tuberculosis infection does not correlate with protection.<sup>36</sup> However, the authors clearly indicate that the fact that IFNG is required for protection against *M. tuberculosis* is not debated, but it is questionable if measuring levels of purified protein derivative-induced IFNG could be used as a surrogate marker of protection, pointing out the need of finding reliable markers of protection.<sup>36</sup> In line with that suggestion, we have recently demonstrated that the ratio of *Mtb*-Ag-expanded CD4<sup>+</sup>IFNG<sup>+</sup>IL17<sup>+</sup> lymphocytes in peripheral blood and pleural fluid from TB patients is correlated directly with clinical parameters associated with disease severity, indicating that the determination of that lymphocyte population might be an indicator of the clinical outcome of active tuberculosis.<sup>23</sup>

Several recent studies have demonstrated that autophagy is a crucial weapon in the host cells fight against bacterial and viral invasion.<sup>37,38</sup> Thus, accumulating evidence indicates that the outcome of the pathogen interaction with the autophagic pathway is a matter of life or death for the invading microbe.<sup>39</sup> Accordingly, it has been previously demonstrated that induction of autophagy suppresses intracellular survival of mycobacteria.<sup>10</sup> Besides, autophagy is induced by most of the cytokines produced during Th1-polarized response.<sup>40</sup> In fact, activation with IFNG, a physiological stimulus, activates autophagy in phagocytic cells of the immune system.<sup>10</sup> By inducing autophagy, IFNG leads to increased maturation of mycobacteria-containing phagosomes and suppresses survival of virulent *M. tuberculosis* H37Rv in human and murine macrophage cell lines.<sup>20</sup> In the present study, we demonstrated the existence of a tight connection between autophagy and IFNG production in cells obtained from patients with active tuberculosis. To our knowledge, this work shows for

**Figure 4 (See previous page). IFNG induced in response to *Mtb*-Ag participate in the process of autophagy.** PBMC from healthy donors (HD), high-responder TB patients (HR TB) and low-responder TB patients (LR TB) were incubated at  $2 \times 10^6$  cells/ml in RPMI with 10% FBS. Cells were stimulated with or without sonicated *M. tuberculosis* (*Mtb*-Ag)  $\pm$  anti-IFNG (A) or recombinant IFNG (rIFNG) (B) for 24 h. Immunofluorescence and intracellular flow staining for LC3 was then performed and samples were analyzed using a confocal microscope or a FACS Aria II flow cytometer, respectively. (A) Bars represent the mean values of the number of LC3 puncta/cell  $\pm$  SEM. \* $P < 0.05$ , Wilcoxon matched-pairs signed rank test. Representative images and representative dot plots of cells obtained from a HD and a HR TB patient are depicted. (B) Representative images of cells obtained from a HD, and HR TB and LR TB patients are shown. Bars represent the mean values of the number of LC3 puncta/cell  $\pm$  SEM. \* $P < 0.05$ , \*\* $P < 0.01$ , Wilcoxon matched-pairs signed rank test; # $P < 0.05$ , ## $P < 0.01$  Mann-Whitney Test.

the first time that the levels of IFNG induced by *Mtb*-Ag regulate the process of autophagy in cells from tuberculosis patients.

Control of tuberculosis worldwide depends on our understanding of human immune mechanisms to combat the infection. Macrophages, granulocytes, and dendritic cells in the lungs represent the first line of defense against pathogens entering the lungs.<sup>41</sup> Then, the collaboration between antigen-presenting cells and T cells culminating in their mutual activation and participation in the granulomatous response is mediated in large part by the release of cytokines, chemokines, and other effector molecules by both phagocytes and T cells. Cytokines important in host defense against *M. tuberculosis* in both experimental animals and humans include TNF (tumor necrosis factor), IFNG, IL8, IL12, IL17, IL18, and IL23. By contrast, overexpression of Th2 or Th2-like cytokines, such as IL4, IL10, and TGF $\beta$ 1 (transforming growth factor,  $\beta$  1), is generally considered to predispose the host to *M. tuberculosis*, although controversies exist.<sup>42</sup> Therefore, acquired T-cell responses are critical for host defense against microbial pathogens, although the precise mechanisms by which they act in humans remain unclear. In particular, a key role for IFNG in the immune response to *M. tuberculosis* infection is corroborated by studies indicating that humans with genetic disorders leading to the decreased production of, or response to, IFNG are highly susceptible to tuberculosis and other mycobacterial diseases.<sup>3,43</sup> Nevertheless, it has been difficult to demonstrate that IFNG can activate human monocytes or macrophages to kill intracellular *M. tuberculosis*. Recently, it has been shown that the acquired T cell response can activate antimicrobial activity in human cells of the monocyte and macrophage lineage.<sup>31</sup> The authors demonstrate that T cells, through the release of IFNG, induce autophagy against *M. tuberculosis* in human macrophages via a vitamin D-dependent pathway.<sup>31</sup> In the present study we extended those results to cells from patients with active tuberculosis to further show that *Mtb*-Ag induced autophagy is in direct correlation with the IFNG levels secreted by the subject against the antigen. Indeed, in the present report we have shown that HR tuberculosis patients displayed significant higher levels of LC3-II than LR patients.

Our findings demonstrated that sonicated *Mtb* induced the processing of LC3 in tuberculosis patients and HD without altering the autophagic flux (Fig. S1). It is interesting to mention that we have previously demonstrated that *M. marinum* induces an autophagic response in RAW 264.7-green fluorescent protein-LC3 macrophages although autophagic flux is hampered.<sup>44</sup> A similar impairment of autophagic flux is observed when human dendritic cells are infected with *M. tuberculosis*.<sup>45</sup> Thus, this apparent discrepancy might be explained by the fact that in those previous publications cells are infected with live microorganisms, whereas in our present work PBMC are incubated with sonicated *Mtb*. Thus, it is likely that upon invasion, besides autophagy induction the live pathogen also alters the autophagic machinery in order to prevent a functional autophagic response to eliminate the intruder.

Studies in mice suggest the presence of bacteria in a compartment that cannot be mobilized from the lungs to the lymph node.<sup>46</sup> In order to explain the differences in the immune response of HR and LR patients, we hypothesized that variations in the transport of bacteria from the lungs to the local lymph node might impair the complete activation of T cells from LR

patients.<sup>28</sup> However, additional studies need to be performed to unequivocally explain the weak T cell responses of LR patients by an immunological mechanism. In any case, and even at the site of infection, LR tuberculosis patients produced lower levels of IFNG, the crucial mediator of the protection against *M. tuberculosis*. We have previously demonstrated that immunological parameters in tuberculosis patients correlate with disease severity<sup>18</sup> and that IFNG production from LR tuberculosis patients can be enhanced up to the levels produced by HR individuals after modulation of PDCD1 (programmed cell death 1) and signaling lymphocytic activation molecule (SLAMF1/SLAM) costimulatory pathways.<sup>28</sup> Taking into account those previous observations and considering our present findings demonstrating an impaired autophagic response in monocytes from LR patients, we investigated whether the levels of autophagy in LR patients could be increased up to the levels of HR patients. Indeed, when rIFNG was added in combination with *Mtb*-Ag, we observed a significant augment of autophagy. Interestingly, we used lower concentrations of rIFNG than those previously reported to induce autophagy.<sup>31</sup> In fact, we added the cytokine at a concentration that, in combination with the low levels of IFNG secreted by LR tuberculosis patients, would be close to the amounts of IFNG secreted by HR patients in response to the antigen. Under those conditions, IFNG alone did not modify the levels of LC3-II detected. However, in the presence of the Ag, the autophagy process was augmented to levels close to those found in HR patients. Therefore, autophagy in cells from tuberculosis patients would be influenced by the IFNG secreted upon exposure to *Mtb*-Ag.

While Th1 cytokines play a positive role in autophagy induction, the classical Th2 cytokines IL4 and IL13 have the opposite effect.<sup>47</sup> In the context of infection with *M. tuberculosis*, both IL4 and IL13 inhibit starvation- or IFNG-induced autophagosome formation and lead to decreased phagosome maturation and increased intracellular survival of the bacilli.<sup>47</sup> This is dependent on 2 distinct signaling pathways. The inhibition of starvation-induced autophagy is dependent on the AKT1 (v-akt murine thymoma viral oncogene homolog 1) pathway, while inhibition of IFNG-induced autophagy is dependent on signaling via STAT6 (signal transducer and activator of transcription 6, interleukin-4 induced).<sup>47</sup> Similarly, IL13 is a potent inhibitor of starvation-induced autophagy and it is also dependent on activation of the AKT1 pathway.<sup>47</sup> Furthermore, it has been reported that IL10, a cytokine that displays the unique property of suppressing overall immunity, inhibits autophagy induction in murine macrophages.<sup>48</sup> Altogether, these data suggest, in the context of infection with *M. tuberculosis*, that autophagy is an effector of Th1/Th2 polarization.<sup>20</sup> Our present findings showed that LR tuberculosis patients, whose T cells produce low secretion of IFNG against the antigen, displayed low levels of autophagy in CD14<sup>+</sup> monocytes. Considering: i) our present results indicating that autophagy is regulated by Th1 cytokines; and ii) that autophagy has an essential role during monocyte differentiation and acquisition of macrophage functions,<sup>49</sup> we conclude that the autophagy process might impact the resolution of *M. tuberculosis* infection.

Given that Th2 cytokines are reported to lead to decreased phagosome maturation and increased intracellular survival of *M. tuberculosis*,<sup>47</sup> we hypothesized that our findings showing an impaired autophagic process in cells from LR patients might be due to the secretion of Th2 cytokines by those individuals. However when we measured IL4 in the supernatant fractions from cells cultured with *Mtb*-Ag, no detectable levels of the cytokine were found (data not shown). Nevertheless, we have previously demonstrated that both HR and LR patients produce comparable levels of IL10 against *Mtb*-Ag.<sup>27</sup> Moreover, we have reported that *Mtb*-Ag increases TBX21 (T-box 21) expression and strikingly decreases GATA3 (GATA binding protein 3) levels in HR tuberculosis patients, whereas LR patients display a marked increase in GATA3 expression and no detectable levels of TBX21 after Ag stimulation.<sup>27</sup> Then, we proposed that HR patients that secreted IL10, but produced high levels of IFNG in response to *Mtb*-Ag, might be creating a Th1-like microenvironment, whereas in LR patients, the *Mtb*-Ag induced IL10 production but with very low levels of IFNG, will generate a predominantly Th2-like environment.<sup>27</sup> Together, our previous and present findings suggest that the autophagic process in LR tuberculosis patients might be impaired by effect of Th2 cytokines.

Considering that reduced IFNG production is a marker of severe tuberculosis,<sup>30</sup> different amounts of IFNG would be secreted, following *Mtb*-Ag recognition, by the cells of tuberculosis patients, according to their immune response to the pathogen. Effectively Ag-activated T cells would contribute with IFNG to the cell microenvironment, and consequently, the autophagy process would occur. In contrast, T cells weakly responsive to *Mtb*-Ag would fail to produce IFNG against the bacteria, but would secrete IL10, generating a predominantly Th2-like environment,<sup>27</sup> which would impair the autophagic process. Moreover, whereas only a few LC3 puncta were detected in *Mtb*-Ag-stimulated cells from LR tuberculosis patients, LC3 puncta accumulated when LPS was added to the culture media of PBMC from these patients (data not shown), further suggesting that the different levels of autophagy observed in tuberculosis patients are specific to *Mtb*-Ag. Given the key role of autophagy as a defense mechanism, it is tempting to speculate that vaccines that may induce an autophagic response could be more successful in preventing either acquisition of tuberculosis or reactivation of latent tuberculosis. From ours and similar studies by colleagues in the field, it is becoming evident that rigorous analyses of the role of autophagy in pathogen-host interactions, at the molecular and cellular level, are imperative to identify new targets and design novel therapeutic tools to fight against microorganisms such as mycobacteria.<sup>39</sup>

## Materials and Methods

### Subjects

HIV-uninfected patients with tuberculosis were diagnosed at the “Dr. F Muñoz” Hospital and at the “Dr. E. Tornú” Hospital (Buenos Aires, Argentina), based on clinical and radiological data, together with the identification of acid-fast bacilli in sputum. All patients had received less than one wk of

antituberculosis therapy, and were classified, as previously reported,<sup>18</sup> based on in vitro lymphocyte responses to *M. tuberculosis* antigen. Briefly, high-responder patients are individuals displaying significant proliferative responses, IFNG production and an increased SLAM expression against the antigen; whereas LR patients exhibit low proliferative responses, IFNG production and SLAM expression. LR patients had more severe pulmonary disease, lower leukocyte counts, and a more prolonged illness, compared to HR individuals. In our patient population, no differences regarding age distribution, sex, ethnicity, or frequency of extra pulmonary forms of TB were found between HR and LR tuberculosis patients. However, significant differences were detected regarding X-ray radiography severity, leukocyte count, and time of disease evolution (days previous to hospital admission, during which, the patient displays clinical symptoms). As controls, we enrolled Bacillus Calmette-Guérin (BCG) vaccinated healthy adults lacking a history of tuberculosis. Individuals with latent infection were excluded following assessment using the QuantiFERON TB Gold In-tube test (Cellestis Ltd., T0590-0301 and 0594-0201). All participants provided a written, informed consent for the collection of samples and subsequent analysis. The protocols conducted in this work were approved by the Ethical Committee of the Muñoz Hospital, the Dr. E. Tornú Hospital, and by the International Review Board Fundación Huésped.

### Antigen

Cells were stimulated in vitro with a cell lysate from the virulent *M. tuberculosis* H37Rv strain prepared by probe sonication (*Mtb*-Ag) (BEI Resources, NIAID, NIH: *Mycobacterium tuberculosis*, Strain H37Rv, whole cell lysate, NR-14822).

### Cell preparation and reagents

PBMC were isolated by centrifugation over Ficoll-Hypaque (GE Healthcare, 17-1440-03) and cultured  $\pm$  *Mtb*-Ag with RPMI 1640 (Invitrogen, 22400071) supplemented with 10% fetal bovine serum (FBS; Gibco, 10437028). In different experiments, cells were cultured at  $2 \times 10^6$  cells/ml for the determination of LC3 puncta formation by confocal microscopy or at  $3 \times 10^6$  cells/ml for LC3 protein gel blot or LC3 flow cytometry detection. Cell-free supernatant fractions from cultures used for assaying LC3-II levels by western blot were recovered to detect IFNG production by ELISA (BioLegend, 430106). In order to determine the effect of *Mtb*-Ag on the autophagic flux, the vacuolar-type HC-ATPase inhibitor bafilomycin A<sub>1</sub> (100 nM; Fermentek, 88899-55-2) was added for the last 2 h of culture before LC3-II determination by protein gel blot. PBMC were also stimulated with *Mtb*-Ag in the presence or absence of recombinant IFNG (rIFNG at 1.8 ng/ml) (eBioscience, 14-8319) or an anti-IFNG blocking antibody at 10  $\mu$ g/ml) (eBioscience, 16-7318) for 24 h, before assaying for LC3 puncta formation by confocal microscopy.

### Western blot

Processing of LC3 protein into LC3-II, the phagophore- and autophagosome-associated form was assayed. After 24 h of *Mtb*-

Ag stimulation, nonadherent cells were separated by several washes with phosphate-buffered saline (PBS; 137 mM NaCl, 2.7 mM KCl, 10 mM Na<sub>2</sub>HPO<sub>4</sub>, 1.8 mM KH<sub>2</sub>PO<sub>4</sub>, pH 7.4) and protein extracts from both fractions were obtained. Western blotting was performed by standard methods using 15% polyacrylamide gels. Each nitrocellulose membrane was blotted with antibodies to LC3 (Cell Signaling Technology, 2775) and GAPDH (Ambion, AM4300). Bound antibodies were detected with HRP-conjugated antibody (Bio-Rad, anti-rabbit 170-6515, anti-mouse 170-6516) using Amersham ECL PLUS reagent (GE Healthcare, RPN2106). Images were obtained with an Intelligent Dark Box (Fujifilm LAS1000, Tokyo, Japan) and analyzed with ImageJ Analysis software. The intensity of each band was expressed as arbitrary units (AU).

### Confocal microscopy

For immunofluorescence, cells were cultured and stimulated on coverslips for 24 h. After incubation under different experimental conditions, cells were washed in order to remove nonadherent cells. Adherent cells were then fixed with 100% cold methanol for 20 sec. Cells were then washed and subsequently permeabilized and blocked with blocking buffer (PBS containing 0.5% saponin (Santa Cruz Biotechnology, sc-280079A) and 1% bovine serum albumin (Santa Cruz Biotechnology, sc-2323A) for 15 min. The buffer was then removed and the LC3 primary antibody was added (Cell Signaling Technology, 2775) and incubated for 16 h at 4°C. Afterwards, the cells were washed with blocking buffer and incubated with the secondary antibody (Alexa Fluor<sup>®</sup> 488 Goat Anti-Rabbit IgG (H<sup>+</sup>L); Invitrogen, A11008) for 2 h at room temperature. Finally, nuclei were stained with DAPI (Fig. S2). The coverslips were mounted with PBS-glycerol (Sigma-Aldrich, G2025) and fixed cells were imaged using a Zeiss Spectral LSM 510 confocal microscope (Zeiss, Jena, Germany) using objective 63, numerical aperture (NA) 1.42. The number of LC3 puncta per cell was then quantified using ImageJ image analysis software.

### Image processing

All the images were processed using ImageJ software (Wayne Rasband, National Institutes of Health). After the image binarization using a defined threshold, the puncta number was quantified using the Particle Analyzer plugin. Brightness and contrast was adjusted in all images belonging to the same individual, when needed.

### Flow cytometry

PBMC from tuberculosis patients and healthy donors were stimulated with *Mtb*-Ag as described above. Cells were then stained with specific fluorophore-marked antibodies against CD3, CD4 or CD14 (Biolegend, 317336, 317428, 325608,

respectively). Intracellular staining of endogenous saponin-resistant LC3 was done as described by Eng KE et al.<sup>22</sup> Briefly, PBMC were washed with PBS and then permeabilized with PBS containing 0.05% saponin. In this protocol, the cells are not fixed, therefore LC3-I is washed out of the cell because, unlike LC3-II, it is not anchored to the autophagosome.<sup>22</sup> Cells were then incubated with mouse anti-human LC3 antibody (MBL International, M152-3) for 20 min, rinsed with PBS, incubated with anti-mouse secondary antibody conjugated to Phycoerythrin (eBioscience, 12-4012) for 20 min and rinsed twice more with PBS. Afterwards, cells were stained with an anti-CD14 antibody (Biolegend, 325608) to detect the monocyte population. Negative control samples were incubated with irrelevant isotype-matched monoclonal antibody (eBioscience, 12-4717). Intracellular staining to detect IFNG was performed as previously described (IFNG antibody, eBiosciences).<sup>23</sup> Samples were analyzed on a FACSAria II flow cytometer (BD Biosciences, California, USA).

### Statistics

The Mann-Whitney and the Wilcoxon Rank-Sum tests were used to analyze differences between unpaired or paired samples, respectively. *P* values of <0.05 were considered statistically significant. Correlation analyses were performed using the nonparametric Spearman correlation test.

### Disclosure of Potential Conflicts of Interest

No potential conflicts of interest were disclosed.

### Acknowledgements

We thank Dr. Peter Barnes for insightful discussions.

### Funding

This investigation received financial support from the Agencia Nacional de Promoción Científica y Tecnológica (PAE-PID-2007-00127, PAE-PICT-2007-02332 and PICT-2011-0240 to V. E. G; PICT-2008-0192 and PICT-2011 to M.I.C); the University of Buenos Aires (20020100100221 to V.E.G.); Consejo Nacional de Investigaciones Científicas y Tecnológicas (PIP 2012-2014 to V.E.G.); and Universidad Nacional de Cuyo (SECYPT to M.I.C.). M.I.C and V.E.G. are members of the Researcher Career of CONICET (Argentina).

### Supplemental Material

Supplemental data for this article can be accessed on the publisher's website.

### References

1. Cooper AM, Dalton DK, Stewart TA, Griffin JP, Russell DG, Orme IM. Disseminated tuberculosis in interferon gamma gene-disrupted mice. *J Exp Med* 1993; 178:2243-7; PMID:8245795; <http://dx.doi.org/10.1084/jem.178.6.2243>
2. Flynn JL, Chan J, Triebold KJ, Dalton DK, Stewart TA, Bloom BR. An essential role for interferon gamma in resistance to Mycobacterium tuberculosis infection. *J Exp Med* 1993; 178:2249-54; PMID:7504064; <http://dx.doi.org/10.1084/jem.178.6.2249>
3. Newport MJ, Huxley CM, Huston S, Hawrylowicz CM, Oostra BA, Williamson R, Levin M. A mutation in the interferon-gamma-receptor gene and susceptibility to mycobacterial infection. *N Engl J Med* 1996; 335:1941-9; PMID:8960473; <http://dx.doi.org/10.1056/NEJM199612263352602>
4. Holland SM. Interferon gamma, IL-12, IL-12R and STAT-1 immunodeficiency diseases: disorders of the interface of innate and adaptive immunity. *Immunol*

- Res 2007; 38:342-6; PMID:17917041; <http://dx.doi.org/10.1007/s12026-007-0045-8>
5. Flynn JL. Lessons from experimental Mycobacterium tuberculosis infections. *Microbes Infect* 2006; 8:1179-88; PMID:16513383; <http://dx.doi.org/10.1016/j.micinf.2005.10.033>
  6. Sodhi A, Gong J, Silva C, Qian D, Barnes PF. Clinical correlates of interferon gamma production in patients with tuberculosis. *Clin Infect Dis: Off Pub Infect Dis Soc Am* 1997; 25:617-20; PMID:9314449; <http://dx.doi.org/10.1086/513769>
  7. Nathan CF, Kaplan G, Levis WR, Nusrat A, Witmer MD, Sherwin SA, Job CK, Horowitz CR, Steinman RM, Cohn ZA. Local and systemic effects of intradermal recombinant interferon-gamma in patients with lepromatous leprosy. *N Engl J Med* 1986; 315:6-15; PMID:3086725; <http://dx.doi.org/10.1056/NEJM198607033150102>
  8. Kaplan G, Nusrat A, Sarno EN, Job CK, McElrath J, Porto JA, Nathan CF, Cohn ZA. Cellular responses to the intradermal injection of recombinant human gamma-interferon in lepromatous leprosy patients. *Am J Pathol* 1987; 128:345-53; PMID:3113256
  9. Harris J, De Haro SA, Master SS, Keane J, Roberts EA, Delgado M, Deretic V. T helper 2 cytokines inhibit autophagic control of intracellular Mycobacterium tuberculosis. *Immunity* 2007; 27:505-17; PMID:17892853; <http://dx.doi.org/10.1016/j.immuni.2007.07.022>
  10. Gutierrez MG, Master SS, Singh SB, Taylor GA, Colombo MI, Deretic V. Autophagy is a defense mechanism inhibiting BCG and Mycobacterium tuberculosis survival in infected macrophages. *Cell* 2004; 119:753-66; PMID:15607973; <http://dx.doi.org/10.1016/j.cell.2004.11.038>
  11. Shi CS, Kehrl JH. TRAF6 and A20 regulate lysine 63-linked ubiquitination of Beclin-1 to control TLR4-induced autophagy. *Sci Signal* 2010; 3:ra42; PMID:20501938
  12. Tanida I, Ueno T, Kominami E. Human light chain 3MAP1LC3B is cleaved at its carboxyl-terminal Met121 to expose Gly120 for lipidation and targeting to autophagosomal membranes. *J Biol Chem* 2004; 279:47704-10; PMID:15355958; <http://dx.doi.org/10.1074/jbc.M407016200>
  13. Ichimura Y, Kirisako T, Takao T, Satomi Y, Shimonishi Y, Ishihara N, Mizushima N, Tanida I, Kominami E, Ohsumi M, et al. A ubiquitin-like system mediates protein lipidation. *Nature* 2000; 408:488-92; PMID:11100732; <http://dx.doi.org/10.1038/35044114>
  14. Feng CG, Zheng L, Lenardo MJ, Sher A. Interferon-inducible immunity-related GTPase Irgm1 regulates IFN gamma-dependent host defense, lymphocyte survival and autophagy. *Autophagy* 2009; 5:232-4; PMID:19066452; <http://dx.doi.org/10.4161/auto.5.2.7445>
  15. Intemann CD, Thye T, Niemann S, Browne EN, Amanua Chinbuah M, Enimil A, Gyapong J, Osei I, Owusu-Dabo E, Helm S, et al. Autophagy gene variant IRGM -261T contributes to protection from tuberculosis caused by Mycobacterium tuberculosis but not by M. africanum strains. *PLoS Pathog* 2009; 5:e1000577; PMID:19750224; <http://dx.doi.org/10.1371/journal.ppat.1000577>
  16. King KY, Lew JD, Ha NP, Lin JS, Ma X, Graviss EA, Goodell MA. Polymorphic allele of human IRGM1 is associated with susceptibility to tuberculosis in African Americans. *PLoS One* 2011; 6:e16317; PMID:21283700; <http://dx.doi.org/10.1371/journal.pone.0016317>
  17. Kim BH, Shenoy AR, Kumar P, Das R, Tiwari S, MacMicking JD. A family of IFN-gamma-inducible 65-kD GTPases protects against bacterial infection. *Science* 2011; 332:717-21; PMID:21551061; <http://dx.doi.org/10.1126/science.1201711>
  18. Pasquinelli V, Quiroga MF, Martinez GJ, Zorrilla LC, Musella RM, Bracco MM, Belmonte L, Malbran A, Fainboim L, Sieling PA, et al. Expression of signaling lymphocytic activation molecule-associated protein interrupts IFN-gamma production in human tuberculosis. *J Immunol* 2004; 172:1177-85; PMID:14707094; <http://dx.doi.org/10.4049/jimmunol.172.2.1177>
  19. Castillo EF, Dekonenko A, Arko-Mensah J, Mandell MA, Dupont N, Jiang S, Delgado-Vargas M, Timmins GS, Bhattacharya D, Yang H, et al. Autophagy protects against active tuberculosis by suppressing bacterial burden and inflammation. *Proc Natl Acad Sci U S A* 2012; 109:E3168-76; PMID:23093667; <http://dx.doi.org/10.1073/pnas.1210500109>
  20. Goletti D, Petruccioli E, Romagnoli A, Piacentini M, Fimia GM. Autophagy in Mycobacterium tuberculosis infection: a passepartout to flush the intruder out? *Cytokine Growth Factor Rev* 2013; 24:335-43; PMID:23395260; <http://dx.doi.org/10.1016/j.cytogfr.2013.01.002>
  21. Man N, Chen Y, Zheng F, Zhou W, Wen LP. Induction of genuine autophagy by cationic lipids in mammalian cells. *Autophagy* 2010; 6:449-54; PMID:20383065; <http://dx.doi.org/10.4161/auto.6.4.11612>
  22. Eng KE, Panas MD, Karlsson Hedestam GB, McInerney GM. A novel quantitative flow cytometry-based assay for autophagy. *Autophagy* 2010; 6:634-41; PMID:20458170; <http://dx.doi.org/10.4161/auto.6.5.12112>
  23. Jurado JO, Pasquinelli V, Alvarez IB, Pena D, Rovetta AI, Tateosian NL, Romeo HE, Musella RM, Palmero D, Chuluyan HE, et al. IL-17 and IFN-gamma expression in lymphocytes from patients with active tuberculosis correlates with the severity of the disease. *J Leukoc Biol* 2012; 91:991-1002; PMID:22416258; <http://dx.doi.org/10.1189/jlb.1211619>
  24. Spellberg B, Edwards JE Jr. Type 1/Type 2 immunity in infectious diseases. *Clin Infect Dis: Off Pub Infect Dis Soc Am* 2001; 32:76-102; PMID:11118387; <http://dx.doi.org/10.1086/317537>
  25. Chan ED, Chan J, Schluger NW. What is the role of nitric oxide in murine and human host defense against tuberculosis? Current knowledge. *Am J Respir Cell Mol Biol* 2001; 25:606-12; PMID:11713103; <http://dx.doi.org/10.1165/ajrcmb.25.5.4487>
  26. Dorman SE, Holland SM. Interferon-gamma and interleukin-12 pathway defects and human disease. *Cytokine Growth Factor Rev* 2000; 11:321-33; PMID:10959079; [http://dx.doi.org/10.1016/S1359-6101\(00\)00010-1](http://dx.doi.org/10.1016/S1359-6101(00)00010-1)
  27. Quiroga MF, Pasquinelli V, Martinez GJ, Jurado JO, Zorrilla LC, Musella RM, Abbate E, Sieling PA, Garcia VE. Inducible costimulator: a modulator of IFN-gamma production in human tuberculosis. *J Immunol* 2006; 176:5965-74; PMID:16670305; <http://dx.doi.org/10.4049/jimmunol.176.10.5965>
  28. Jurado JO, Alvarez IB, Pasquinelli V, Martinez GJ, Quiroga MF, Abbate E, Musella RM, Chuluyan HE, Garcia VE. Programmed death (PD)-1/PD-ligand 1/PD-ligand 2 pathway inhibits T cell effector functions during human tuberculosis. *J Immunol* 2008; 181:116-25; PMID:18566376; <http://dx.doi.org/10.4049/jimmunol.181.1.116>
  29. Samten B, Thomas EK, Gong J, Barnes PF. Depressed CD40 ligand expression contributes to reduced gamma interferon production in human tuberculosis. *Infect Immun* 2000; 68:3002-6; PMID:10769003; <http://dx.doi.org/10.1128/IAI.68.5.3002-3006.2000>
  30. Gong JH, Zhang M, Modlin RL, Linsley PS, Iyer D, Lin Y, Barnes PF. Interleukin-10 downregulates Mycobacterium tuberculosis-induced Th1 responses and CTLA-4 expression. *Infect Immun* 1996; 64:913-8; PMID:8641800
  31. Fabri M, Stenger S, Shin DM, Yuk JM, Liu PT, Realegeno S, Lee HM, Krutzik SR, Schenk M, Sieling PA, et al. Vitamin D is required for IFN-gamma-mediated antimicrobial activity of human macrophages. *Sci Trans Med* 2011; 3:104ra2; PMID:21998409; <http://dx.doi.org/10.1126/scitranslmed.3003045>
  32. Songane M, Kleinnijenhuis J, Netea MG, van Crevel R. The role of autophagy in host defence against Mycobacterium tuberculosis infection. *Tuberculosis (Edinb)* 2012; 92:388-96; PMID:22683183; <http://dx.doi.org/10.1016/j.tube.2012.05.004>
  33. Kaufmann SH. How can immunology contribute to the control of tuberculosis? *Nat Rev Immunol* 2001; 1:20-30; PMID:11905811; <http://dx.doi.org/10.1038/35095558>
  34. Samten B, Ghosh P, Yi AK, Weis SE, Lakey DL, Gonsky R, Pendurthi U, Wizel B, Zhang Y, Zhang M, et al. Reduced expression of nuclear cyclic adenosine 5'-monophosphate response element-binding proteins and IFN-gamma promoter function in disease due to an intracellular pathogen. *J Immunol* 2002; 168:3520-6; PMID:11907114; <http://dx.doi.org/10.4049/jimmunol.168.7.3520>
  35. Hoft DF, Worku S, Kampmann B, Whalen CC, Ellner JJ, Hirsch CS, Brown RB, Larkin R, Li Q, Yun H, et al. Investigation of the relationships between immune-mediated inhibition of mycobacterial growth and other potential surrogate markers of protective Mycobacterium tuberculosis immunity. *J Infect Dis* 2002; 186:1448-57; PMID:12404160; <http://dx.doi.org/10.1086/344359>
  36. Elias D, Akuffo H, Britton S. PPD induced in vitro interferon gamma production is not a reliable correlate of protection against Mycobacterium tuberculosis. *Trans Royal Soc Trop Med Hygiene* 2005; 99:363-8; PMID:15780343; <http://dx.doi.org/10.1016/j.trstmh.2004.08.006>
  37. Marino G, Lopez-Otin C. Autophagy: molecular mechanisms, physiological functions and relevance in human pathology. *Cell Mol Life Sci* 2004; 61:1439-54; PMID:15197469; <http://dx.doi.org/10.1007/s00018-004-4012-4>
  38. Levine B. Eating oneself and uninvited guests: autophagy-related pathways in cellular defense. *Cell* 2005; 120:159-62; PMID:15680321
  39. Colombo MI, Gutierrez MG, Romano PS. The two faces of autophagy: coxiella and mycobacterium. *Autophagy* 2006; 2:162-4; PMID:16874070; <http://dx.doi.org/10.4161/auto.2827>
  40. Manca C, Tsenova L, Bergtold A, Freeman S, Tovey M, Musser JM, Barry CE 3rd, Freedman VH, Kaplan G. Virulence of a Mycobacterium tuberculosis clinical isolate in mice is determined by failure to induce Th1 type immunity and is associated with induction of IFN-alpha beta. *Proc Natl Acad Sci U S A* 2001; 98:5752-7; PMID:11320211; <http://dx.doi.org/10.1073/pnas.091096998>
  41. Gonzalez-Juarrero M, Shim TS, Kipnis A, Junqueira-Kipnis AP, Orme IM. Dynamics of macrophage cell populations during murine pulmonary tuberculosis. *J Immunol* 2003; 171:3128-35; PMID:12960339; <http://dx.doi.org/10.4049/jimmunol.171.6.3128>
  42. Bai X, Kim SH, Azam T, McGibney MT, Huang H, Dinarello CA, Chan ED. IL-32 is a host protective cytokine against Mycobacterium tuberculosis in differentiated THP-1 human macrophages. *J Immunol* 2010; 184:3830-40; PMID:20190143; <http://dx.doi.org/10.4049/jimmunol.0901913>
  43. Altare F, Durandy A, Lammass D, Emile JF, Lamhamedi S, Le Deist F, Drysdale P, Jouanguy E, Doffinger R, Bernardin F, et al. Impairment of mycobacterial immunity in human interleukin-12 receptor deficiency. *Science* 1998; 280:1432-5; PMID:9603732; <http://dx.doi.org/10.1126/science.280.5368.1432>
  44. Lerena MC, Colombo MI. Mycobacterium marinum induces a marked LC3 recruitment to its containing phagosome that depends on a functional ESX-1 secretion system. *Cell Microbiol* 2011; 13:814-35; PMID:21447143; <http://dx.doi.org/10.1111/j.1462-5822.2011.01581.x>
  45. Romagnoli A, Enna MP, Giacomini E, Pardini M, Remoli ME, Corazzari M, Falasca L, Goletti D, Gafa V, Simeone R, et al. ESX-1 dependent impairment of autophagic flux by Mycobacterium tuberculosis in human dendritic cells. *Autophagy* 2012; 8:1357-70; PMID:22885411; <http://dx.doi.org/10.4161/auto.20881>

46. Wolf AJ, Desvignes L, Linas B, Banaice N, Tamura T, Takatsu K, Ernst JD. Initiation of the adaptive immune response to *Mycobacterium tuberculosis* depends on antigen production in the local lymph node, not the lungs. *J Exp Med* 2008; 205:105-15; PMID: 18158321; <http://dx.doi.org/10.1084/jem.20071367>
47. Harris J, Master SS, De Haro SA, Delgado M, Roberts EA, Hope JC, Keane J, Deretic V. Th1-Th2 polarisation and autophagy in the control of intracellular mycobacteria by macrophages. *Vet Immunol Immunopathol* 2009; 128:37-43; PMID:19026454; <http://dx.doi.org/10.1016/j.vetimm.2008.10.293>
48. Park HJ, Lee SJ, Kim SH, Han J, Bae J, Kim SJ, Park CG, Chun T. IL-10 inhibits the starvation induced autophagy in macrophages via class I phosphatidylinositol 3-kinase (PI3K) pathway. *Mol Immunol* 2011; 48:720-7; PMID:21095008; <http://dx.doi.org/10.1016/j.molimm.2010.10.020>
49. Jacquel A, Obba S, Solary E, Auberger P. Proper macrophagic differentiation requires both autophagy and caspase activation. *Autophagy* 2012; 8:1141-3; PMID:22751215; <http://dx.doi.org/10.4161/autophagy.20367>