

Research Paper

Pre-breeding studies in *Panicum coloratum* var. *coloratum*: Characterization using agro-morphological traits and molecular markers

Estudios de pre-mejoramiento genético en Panicum coloratum var. coloratum: Caracterización usando marcadores moleculares y caracteres agro-morfológicos

ESTANISLAO BURGOS¹, CAROLINA THOMPSON², MABEL GIORDANO³ AND MARIA A. TOMAS³

¹Instituto de Biotecnología, CICVyA, Instituto Nacional de Tecnología Agropecuaria (INTA), Hurlingham, Buenos Aires, Argentina. inta.gob.ar/instdebiotecnologia

²Laboratorio de Inmunología, EEA Rafaela, INTA, Rafaela, Santa Fe, Argentina. inta.gob.ar/rafaela

³Mejoramiento Genético de Forrajeras, EEA Rafaela, INTA, Rafaela, Santa Fe, Argentina. inta.gob.ar/rafaela

Abstract

Panicum coloratum var. *coloratum* is a native African perennial C4 grass, introduced to Argentina. It is tolerant of salinity and cold and has good forage production. The scarce genotypic and phenotypic information about this grass limits its breeding in order to satisfy market demands. The aim of this study was to evaluate the variability in a collection of *P. coloratum* var. *coloratum* formed by 8 accessions and grown at EEA INTA Rafaela during the summer of 2011, based on 15 ISSR molecular markers and 17 morphological characters. For all morphological characters, the distribution of variability observed in the collection was high and not homogenous. The characters that showed greater variation were related to forage and seed production. Eight ISSRs, selected according to their reproducibility, showed 127 bands with 100% polymorphism and allowed grouping of populations according to their site of collection. AMOVA study indicated that more than 58% of the molecular variation existed within accessions; this would be consistent with the predominant allogamous form of reproduction. The results showed that the combined use of molecular and morphological markers offer complementary information. The high variability detected in this collection will allow for the initiation of a breeding program to improve important characters like those related to DM yield and seed production.

Keywords: ISSRs, variability, warm season grass.

Resumen

Panicum coloratum var. *coloratum* es una gramínea C4 perenne, originaria de África e introducida en Argentina alrededor de 1990. Se destaca por su buena producción de forraje y tolerancia a la salinidad y frío. La escasa información genotípica y fenotípica de este pasto ha limitado su uso en programas de mejoramiento y su demanda en el mercado. El objetivo del estudio fue evaluar la variabilidad en una colección de *P. coloratum* var. *coloratum* formada por 8 accesiones establecidas en la Estación Experimental Agropecuaria Rafaela del INTA en Argentina. El trabajo se realizó en la época de verano de 2011, utilizando 15 marcadores moleculares ISSR y 17 marcadores morfológicos. Todos los caracteres morfológicos evaluados presentaron una amplia distribución de la variabilidad, siendo esta no homogénea en la colección. Los caracteres con mayor variación fueron los relacionados con la producción de semilla y de forraje. Ocho

Correspondence: Estanislao Burgos, Instituto de Biotecnología, CICVyA, INTA, Las Cabanas y Los Reseros s/n, B1712 WAA, Hurlingham, Buenos Aires, Argentina.
Email: burgos.estanislao@inta.gob.ar

ISSRs fueron seleccionados de acuerdo con su grado de reproducibilidad. Estos reprodujeron 127 bandas con 100% de polimorfismo y permitieron agrupar las poblaciones de acuerdo con su sitio de recolección. El análisis AMOVA indicó que más del 58% de la variación se presenta dentro de las accesiones, lo cual sería consecuente con la forma de reproducción algáma predominante en la especie. Estos resultados demuestran que el uso combinado de marcadores moleculares y morfológicos ofrece información complementaria de gran utilidad para evaluar la variabilidad de esta especie. Los resultados del estudio podrían ser utilizados para el comienzo de un programa de mejoramiento de caracteres importantes, entre ellos los relacionados con la producción de materia seca y semilla.

Palabras clave: Gramínea de clima cálido, ISSRs, variabilidad.

Introduction

Panicum coloratum L. (subfamily Panicoideae, tribe Paniceae) is a warm season perennial grass originating in Africa and introduced to Argentina around 1990 to be used as forage (Tischler and Ocumpaugh 2004). It is referred to in the literature as an allogamous cross-pollinated species (Pritchard and De Lacy 1974), and chromosome numbers are variable, although the most frequently reported is the tetraploid $2n=4X=36$. The species is represented in Argentina by 2 varieties: var. *makarikariense* Gooss. (Goossens 1934) and var. *coloratum* (Bogdan 1977). It has been introduced to the country in multiple events that have been partially documented; collections are scarcely preserved in active genebanks (Armando et al. 2013). There has been renewed interest in the species recently following the relocation of livestock production to less productive areas and the subsequent need to produce forage of reasonably good quality and quantity in these situations (Rearte 2007; Manuel-Navarrete et al. 2009). As a result breeding efforts have been initiated in Argentina, since *P. coloratum* is one possible option for overcoming forage shortage in areas with climatic and edaphic constraints.

Breeding of perennial grasses is a lengthy process that involves several phases, such as gathering basic information about aspects of reproductive biology and cytology. It is essential to acquire a range of genetic material by compiling germplasm sources from different collections and evaluating it prior to performing selection and breeding (Vogel and Burson 2004). Breeding efforts with *P. coloratum* var. *coloratum* have led to cultivars with increased seedling weight (Hussey and Holt 1986) and the development of several lines with improved agronomic characteristics such as good seed retention (Young 1986), seed dormancy (Tischler and Young 1983) and mesocotyle length (Tischler and Voigt 1995). Although the species shows promise for use in subtropical areas, several traits still need to be improved to increase its adoption by ranchers. In fact, only a single cultivar, cv. Klein, is currently available to farmers in Argentina, and seed quality is frequently diminished by shattering problems.

Prior to commencing breeding activities, this study aimed to: a) evaluate the genetic diversity in the germplasm collection at the Instituto Nacional de Tecnología Agropecuaria (INTA) in Argentina, using inter-simple sequence repeat markers (ISSRs) and agronomically relevant morphological characters; b) compare the variability within and between accessions in the collection and with the commercial cv. Verde Kleingrass; and c) harmonize configurations rendered by the 2 types of traits and use them for the simultaneous characterization of accessions to be further used in conservation and breeding.

Materials and Methods

Plant material

The germplasm of *P. coloratum* var. *coloratum* used for this research was collected in 2006 from 7 different locations in 3 provinces in Argentina: Córdoba (accession DF), La Pampa (accessions CH, AN, EM, SO, UL) and Entre Ríos (accession CU). The collection is preserved at the INTA Rafaela Experimental Station (31°11'41" S, 61°29'55" W; 957 mm mean annual precipitation). Collection sites differed in terms of soil characteristics, annual rainfall, original seed source, grazing management, etc. (Table 1). Individual accessions in the collection consisted of 32 plants in a common garden, separated at 0.60 m from one another. Different accessions were separated by a distance of 15 m to reduce the possibility of cross-pollination. The collection also included a plot of individuals from the commercial cv. Verde Kleingrass (CM; from here on referred to as 'cv. Klein'). Plant morphological characterization was performed between January and April 2011, during which 821 mm accumulated rainfall was recorded, a figure well in excess of the historical precipitation for that period (485 mm); mean temperature was 23.4 °C. The soil at this location is classified as Argiudoll (loamy, approximately 3% organic matter content, neutral pH, medium nutrient content and very low electrical conductivity).

Table 1. Accessions of *Panicum coloratum* var. *coloratum* and description of collection sites.

Accession code	Description	Site	Coordinates	Rainfall (mm/yr)
DF	12-year-old pasture, heavily grazed by cattle	Dean Funes (150 km northwest from Córdoba city)	30°25' S, 64°21' W	620
CH	Intersown in native rangeland, grazed by cattle, seeds produced in Argentina	Farm near Chacharramendi, west of La Pampa Province	37°20' S, 65°39' W	442
AN	9-year-old pasture, sown with seeds from USA, grazed by cattle	Anguil, close to Santa Rosa, La Pampa	36°30' S, 63°59' W	652
EM	3-year-old pasture, grazed by cattle	El Mirador, farm close to Gral. Acha, La Pampa	36°33' S, 64°50' W	556
SO	9-year-old pasture, sown with seeds from USA, grazed by cattle	Sol de Mayo, farm close to Gral. Acha, La Pampa	36°24' S, 64°21' W	556
UL	12-year-old pasture, grazed by cattle	Ultracán, south of Gral. Acha, La Pampa	37°22' S, 64°54' W	625
CU	9-year-old pasture, grazed by cattle	Concepción del Uruguay INTA Experiment Station	32°29' S, 58°20' W	1,188
CM	Seeds currently distributed by a private company	Cultivar 'Verde Kleingrass'	-	-

Morphological and agronomic evaluation

Measurements were performed on 10 individual plants for each accession, giving a total of 80 plants. A group of 17 morphological variables were recorded, related to forage production, forage quality and characters associated with seed production. Descriptions of variables and abbreviations used are displayed in Table 2. All observations were performed on adult plants. Three tillers per plant were tagged before starting measurements to calculate leaf elongation rate (LER). After an initial harvest at 15 cm height, a single growing leaf per tiller was measured every 5–7 days from 25 January to 17 February 2011. Daily growing degree units (GDUs) were calculated as

$$\text{GDU} = [(\text{Daily maximum temperature} - \text{Daily minimum temperature})/2] - \text{Tb}$$

where Tb was set to 10 °C base temperature (Ferri et al. 2006). Total aerial biomass was obtained by weighing the total biomass produced after 1,016 GDUs from the initiation of the measurements. The dried (60 °C for 72 hours) material was further milled using a 2 mm mesh before determination of quality parameters as described in Table 2.

Molecular evaluation

Genomic DNA was determined on 3–5 young fresh leaves from each of the plants used for morphological evaluation

following the protocol CTAB described by Sambrook et al. (1989). The genomic DNA quality was evaluated by electrophoresis in agarose 0.8% gels with ethidium bromide (0.5 µg/mL) and 0.5X TBE buffer (45 mM Tris base, 45 mM boric acid, 1 mM EDTA pH 8.0) in 1X TBE buffer at 70 V during 1 h, and visualized under UV light and photographed with the G-box (Syngene®). Specific primers from 5.8s ribosomal gene were designed and used to confirm that the extracted DNA actually belonged to *P. coloratum*.

PCR reactions were performed in a Gene Amp PCR System 9700 thermocycler. Fifteen ISSR primers were tested for amplification (Garayalde et al. 2011). The reactions were performed in a final volume of 25 mL of a mixture containing buffer [75 mM Tris-HCl of pH 8.8, 20 mM (NH₄)₂SO₄, 0.01% (v/v) Tween 20, 2 mM MgCl₂, 0.2 mM of each dNTP, 0.2 µM of primer, 0.05 U/µL of Taq polymerase (Invitrogen) and ~15 ng/µL of genomic DNA (dilution 1/100 of DNA stock genomic)]. Simultaneously with each PCR reaction, a mock sample was added plus 2 controls, consisting of product amplifications of 2 individuals (CH9 and CH10) for each primer (with the aim of revealing the presence of non-specific bands). The program used in the PCR reactions was the same for all 15 primers tested and consisted of an initial period of DNA denaturation at 95 °C for 5 min, followed by 32 cycles of 94 °C for 40 sec, 52–42 °C for 45 sec (the corresponding annealing temperature depending on each pair of primers, see Supplementary Table 1), and 72 °C

Table 2. Morphological traits used to characterize *Panicum coloratum* var. *coloratum* and sampling methods.

Variable	Code	Character	Description
Vegetative characters	PH	Plant height (cm)	From soil surface to average leaf height at the end of the growing season
	DW	Dry weight per plant (g/plant)	At the end of the growing season, both vegetative and reproductive tillers cut and oven-dried to constant weight
	LER	Leaf elongation rate (cm/tiller/day)	Difference in blade length between measurements divided by the time elapsed between measurements
	TN	Number of tillers per plant	Count at the end of growing season, 1,016 GDUs after the last cut
Characters associated with seed production	1,000 SW	1,000 seed weight (g)	Calculated from the average of 3 samples of 100 mature seeds from 10 plants of each accession group
	SN	Number of seeds per panicle	Number of mature caryopsis bracts collected in a trap to avoid loss by shattering
	PaL	Panicle length (cm)	Measured from crown to base of flag leaf; average of 3 panicles per plant
	Shat	Seed retention	Seeds retained in the panicle 379 GDUs after anthesis as a percentage of the total number of seeds produced per panicle
	PN	Number of panicles per plant	Counted at the end of the growing season after seed had shattered
	%ES	Percentage of empty seeds	White caryopses as a percentage of the total caryopses produced per panicle
	RL	Rachis length (cm)	From flag leaf ligule up to the end; average of 3 panicles per plant
	FLL	Flag leaf blade length (cm)	Measured when fully expanded; average of 3 panicles per plant
	FLW	Flag leaf blade width (cm)	Measured when fully expanded; average of 3 panicles per plant
Quality parameters	CP	Crude protein concentration (g/100 g DM)	Determined by Kjeldahl procedure (AOAC 1990 , No. 976.05)
	ADF	Acid detergent fiber concentration (g/100 g DM)	Determined according to Van Soest et al. (1991) in an ANKOM Daisy in vitro system (Ankom Technology, Method 5; 4/13/11)
	NDF	Neutral detergent fiber concentration (g/100 g DM)	Determined according to Van Soest et al. (1991) in an ANKOM Daisy in vitro system (Ankom Technology, Method 5; 4/13/11)
	LDA	Lignin concentration (g/100 g DM)	Determined according to Van Soest et al. (1991) in an ANKOM Daisy in vitro system (Ankom Technology, Method 5; 4/13/11)

for 40 sec, finally maintained at 72 °C for 5 min. Eight primers were selected for further analysis based on polymorphism and good band resolution. PCR products were supplemented with 5 µL of loading buffer (40% w/v sucrose, 0.25% bromophenol blue, 0.25% w/v xylene cyanol). Electrophoretic separation of the PCR products was performed on 1% agarose gels at 70 V for 1 h in 1X TBE buffer with ethidium bromide (0.5 µg/mL). The molecular profiles were visualized under UV light, photographed and stored for further analysis with the G-box (Syngene®).

Statistical analysis of the data

The analysis of 17 morphological variables was performed through analysis of variance (ANOVA). Mean separation tests were done using the Tukey test with the Bonferroni

correction. Variables were transformed to meet normality and/or homoscedasticity as needed. Mean Euclidean Distance (MED) among individuals in each accession was calculated to estimate phenotypic variation within accessions. Principal component analysis (PCA) based on the standardized Euclidean distance was performed.

ISSR profiles were scored for presence (1) or absence (0) of homologous DNA bands. Genetic diversity was estimated in each accession by means of percentage of polymorphic loci (%P) and number of specific bands per accession. Dissimilarity between pairs of individuals was estimated through genetic distances (GD). Mean genetic distance (MGD) was calculated as the average of the genetic distances among individuals within accessions. Principal coordinates analysis (PCoA) was performed and individuals were plotted in a 2-dimensional graph representing the first 2 axes. All calculations were done using

Infogen (Balzarini et al. 2010). Total genetic variation was partitioned via analysis of molecular variance (AMOVA). The statistical significance of the proportion of the total variance attributed to correlation between individuals within accessions relative to that of the total (PhiPT) was tested through 1,000 random permutations using the software GenAlEx (Excoffier et al. 1992; Peakall et al. 1995; Peakall and Smouse 2006).

Joint analysis

Both agro-morphological and molecular traits were used for the simultaneous characterization of accessions by means of a Generalized Procrustes Analysis (GPA) based on the components obtained from the PCA and PCoA analysis previously described (Bramardi et al. 2005).

Mantel's test t (Mantel 1967) was used to establish the relationship between both types of data. Statistical significance was determined using 1,000 random permutations. Analyses were conducted in R version 3.3.2, using package 'vegan'.

Results

Agro-morphological variation

Ten of the 17 agro-morphological variables studied here showed significant ($P < 0.05$) differences among accessions (Table 3), while 3 of the remaining 7 showed differentiation at $P < 0.10$ (data not shown). Within accessions, MED indicated that accession CU had the highest variability, EM presented the lowest distance among individuals, and the remaining 6 presented values close to the lowest one (Table 3).

Regarding accession characteristics, on average, CH plants showed the highest forage production and number of tillers, while EM presented the lowest dry weight per plant and DF the least number of tillers. However, differences in leaf elongation rate were not so pronounced, and populations presenting the highest values were DF, CU and SO. Forage quality showed a different pattern, with CU plants having highest crude protein concentration and EM plants the lowest, while differences between accessions in NDF, ADF and lignin concentrations were generally less than 10% ($P > 0.05$). All materials produced similar numbers of seeds per panicle ($P = 0.32$) and showed only marginal differences in the percentage of empty seeds ($P = 0.08$).

A PCA biplot based on phenotypic variability among individuals explained 37.7% of the variation in the first 2

axes. Nine variables attained percentages of reconstruction approaching or exceeding 50%, while 3 variables showed very low reconstruction in the first 2 axes (Figure 1A). In general, individuals did not congregate according to their origin.

Comparing the relative performance of accessions with that of cv. Klein (CM), currently commercialized in Argentina, some accessions out-performed Klein in LER, PaL and CP, demonstrating that there is some room for selection.

Molecular variation

Analysis of 80 plants of *P. coloratum* var. *coloratum* rendered 127 ISSR reproducible bands, and 65 of them showed polymorphism (51.2%). The number of amplified bands per primer ranged from 10 to 24, representing a polymorphism range from 40.1 to 67.5% (data not shown).

The amount of variability among individuals within accessions did not differ between accessions: the percentage of polymorphic loci ranged from 42.5 in DF and SO to 59.1 in AN (Table 4). Cultivar Klein (CM) showed an intermediate level of variability. The same pattern was observed regarding mean genetic distance (MGD), with accession AN being the most variable, while SO displayed the least MGD between individuals. Accession-specific ISSR bands were apparent only in AN, SO and CM, indicating that most bands were shared by at least 2 accessions.

The first 2 axes of the PCoA analysis based on the ISSR distance matrix explained 20.0% of the variation (Figure 1B). Four groups could be identified in the plot, although the groups were spread and showed some level of overlapping between them. A rather distinct group was formed by individuals of SO, well separated from the rest. Individuals from AN, EM, CU and CH clustered in the center and formed a group. DF appeared related to CM, and UL showed dispersed individuals forming a separated group.

The dendrogram based on the individual GD ISSR distance matrix clearly conglomerated individuals from the same origin but at a high distance (Figure 2, $r = 0.83$). AMOVA performed on ISSR data showed that only 42% of the molecular variability is attributable to differences between accessions; therefore, most of the variation in this variety would be among individuals within accessions. In agreement with that, only 2 of the assayed primers showed more than 50% of the differentiation between accessions, while another 2 initiators indicated that more than 75% of the total genetic variation was explained by differences between individuals within accessions.

Table 3. Mean (M), Bonferroni test (Bt), relative performance (Rp) and mean Euclidean distance (MED) in *Panicum coloratum* var. *coloratum* accessions for 17 agro-morphological traits.

Trait ¹	Accession ²																						
	AN			CH			CU			DF			EM			SO			UL			CM	
	M	Bt ³	Rp ⁴	M	Bt	Rp	M	Bt	Rp	M	Bt	Rp	M	Bt	Rp	M	Bt	Rp	M	Bt	Rp	M	Bt
PH	86	AB		100	C		99	BC		106	C	+15	83	A	-10	92	ABC		96	ABC		92	ABC
DW	252	AB	-13	422	B	+45	332	AB	+14	244	AB	-16	172	A	-41	220	AB	-25	282	AB		291	AB
LER	4.8	ABC	+10	4.8	ABC	+10	5.5	BC	+26	6.1	C	+39	3.6	A	-18	5.3	BC	+22	4.8	ABC	+11	4.4	AB
TN	148	B	+29	176	B	+54	140	AB	+22	55	A	-52	85	AB	-26	97	AB	-16	120	AB		115	AB
1,000-SW	940	AB		920	AB		850	A	-14	1140	BC	+15	1040	AB		1020	AB		1010	AB		990	AB
SN	113	A		90	A	-21	113	A		62	A	-46	139	A	+21	104	A		110	A		115	A
PaL	69.6	AB		82.3	BC	+19	78.8	ABC	+14	89.7	C	+30	66.2	A		81.6	BC	+18	70.6	AB		69.2	AB
Shat	0.7	A	-17	0.74	A	-11	0.79	A		0.82	A		0.68	A	-17	0.69	A	-16	0.71	A	-13	0.82	A
PN	251	AB		331	B	+35	324	B	+32	135	A	-45	196	AB	-20	171	AB	-30	246	AB		245	AB
%ES	38.8	A		33.7	A	-13	42.8	A	+11	55.1	A	+43	27.9	A	-28	30.3	A	-22	48.7	A	+26	38.6	A
RL	20.7	AB		22.9	AB		23.3	AB		27.1	A	+26	20.9	AB		18.7	B	-13	21.7	AB		21.5	A
FLL	18.9	A		16.9	A		16.4	A		20.0	A	+14	18.6	A		15.2	A	-13	18.2	A		17.5	A
FLW	0.49	AB		0.47	AB		0.55	AB	+10	0.56	AB	+12	0.45	A	-10	0.46	A		0.60	B	+20	0.5	AB
CP	5.9	AB	+16	5.7	A	+12	7.5	B	+48	6.2	AB	+22	4.6	A		5.5	A		6.1	AB	+21	5.1	A
NDF	70.1	A		70.6	A		69.8	A		69.1	A		72.8	A		70.8	A		68.9	A		71.6	A
ADF	35.5	A		37.3	A		36.9	A		35.6	A		37.5	A		36.6	A		35.2	A	-15	37.0	A
LDA	4.1	A		4.3	A		5.1	A	+17	3.9	A	-10	4.1	A		4.7	A		3.7	A		4.4	A
MED	4.88			4.82			7.12			5.13			4.18			4.42			5.15			5.16	

¹**Evaluated traits** (codes, units): PH: Plant height (cm); DW: Dry weight per plant (g); LER: Leaf elongation rate (cm/tiller/d); TN: Number of tillers per plant; 1,000-SW: 1,000 seed weight (g); SN: Number of seeds per panicle (SN); PaL: Panicle length (cm); Shat: Seed retention; PN: Number of panicles per plant; %ES: Percentage of empty seeds; RL: Rachis length (cm); FLL: Flag leaf blade length (cm); FLW: Flag leaf blade width (cm); CP: Crude protein (g/100 g DM); ADF: Acid detergent fiber (g/100 g DM); NDF: Neutral detergent fiber (g/100 g DM), LDA: Lignin (g/100g DM). ²**Accession codes**: AN: Anguil; CH: Chacharramendi; CU: Concepcion del Uruguay; DF: Dean Funes; EM: El Mirador; SO: Sol de Mayo; UL: Ultracán; CM: cv. Klein. ³**Bonferroni test**: Different letters at each population indicate significant differences among populations at P<0.05. ⁴**Rp**: Positive and negative numbers indicate higher or lower values than CM (cv. Klein), respectively.

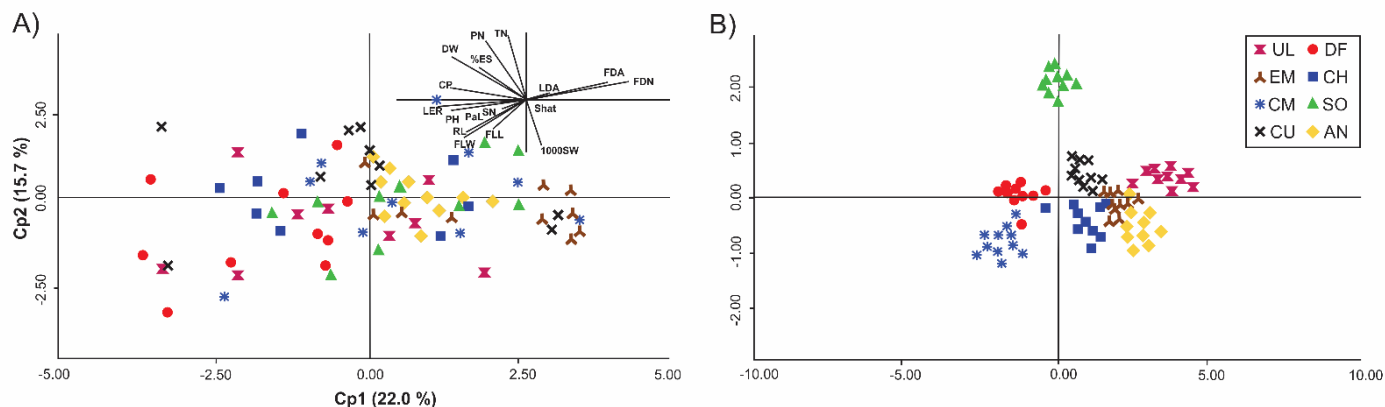


Figure 1. A) Individual and variable plots of principal component analysis (PCA) based on the individual distance matrix of *Panicum coloratum* var. *coloratum* calculated from 17 agro-morphological traits. B) Principal coordinates analysis (PCoA) plot based on the individual ISSR distance matrix of *P. coloratum* var. *coloratum*. See Tables 1 and 2 for a fuller description of the accessions and variables evaluated.

Table 4. Genetic diversity parameters for ISSR markers in accessions of *Panicum coloratum* var. *coloratum*.

Parameter ¹	Accession ²							
	AN	CH	CU	DF	EM	SO	UL	CM
NI	78	75	71	56	69	58	79	70
%P	59.1	54.3	53.5	42.5	50.4	42.5	56.7	51.2
MGD	31.3	27.6	26.7	23.7	28.0	23.1	28.5	26.9
NISp	1	0	0	0	0	1	0	1

¹NI: total number of loci; %P: percentage of polymorphic loci; MGD: mean genetic distance; and NISp: number of accession-specific loci. ²Accession codes see Table 1.

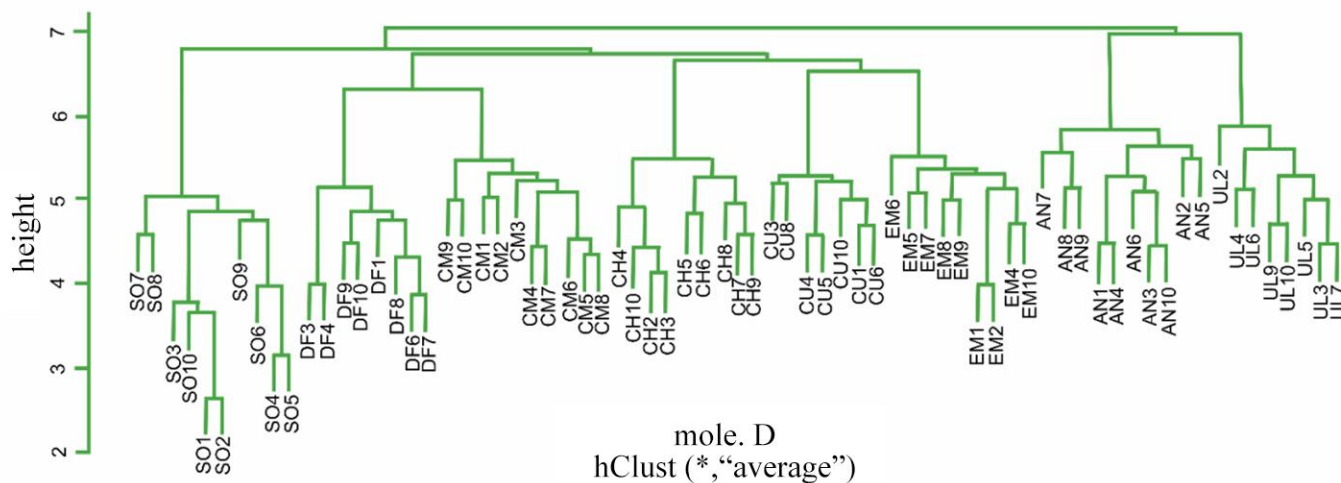


Figure 2. Unweighted pair-group method with arithmetic average (UPGMA) dendrogram based on the GD ISSR distance matrix of *Panicum coloratum* var. *coloratum*. See Table 1 for a fuller description of the accessions evaluated.

Joint characterization

From the Generalized Procrustes Analysis, the first 2 components were responsible for 20.5 and 16.3% of the total variation, respectively, adding up to 36.8%. Breaking down the total sum of squares showed that 77.3% corresponded with the consensus configuration, implying that only 22.7% was linked to the divergence between agronomic and molecular points and the points of the consensus configuration. In addition, the results of the Mantel test showed that the correlation between the 2 sets of data was very low ($r = 0.057$; $P = 0.082$).

Discussion

This study reported significant variation for the 17 morphological and molecular characters evaluated in the collection of *P. coloratum* var. *coloratum* at INTA in Argentina, a collection allotted to germplasm preservation and breeding. Even though the species has been an introduced forage to Argentina and introductions were not well documented, it can be argued that no reduction in variability due to factors such as, for example, founder effect occurred. The collection was assembled from ramets of adult plants, sometimes from quite old pastures that might have been under high selection pressure exerted by grazing, but no reduction of variability relative to the original populations was observed (Silvertown and Lovett Doust 1993). The most variable characters were related to forage production (number of tillers and dry weight per plant) and seed production (number of panicles per plant and number of seeds per panicle), as has been reported for other forages (Casler 2005; Morales-Nieto et al. 2008; Wójtowicz et al. 2009; Abbott and Pistorale 2010). As plants were grown in a common garden setting, environmental conditions were similar for all.

Variability in agro-morphological traits was found both within and between accessions that were in general quite variable, with a certain degree of overlapping. Although some accessions were significantly different for some characteristics, it may be difficult to allocate individuals to accessions based only on morphology. The same degree of variability observed within accessions was registered in the commercial material, CM (cv. Klein). Clearly seed of cv. Klein marketed in Argentina is from a rather genetically wide stabilized population of an allogamous species and identification of the origin of the seeds by a governmental agency may not be simple. This cultivar was developed in the USA (Carr 2014) through a process of recurrent selection to increase seed weight (Hussey and Holt 1986). In fact, the collection at INTA

comprises accessions with heavier seeds, opening the possibility of a new cycle of selection. An important short-coming of the species is the difficulty in seed production due to shattering (Young 1994), which causes major losses of seed at harvesting. Improving this characteristic would be a worthwhile aim for a breeding program. While some materials with greater seed retention have been registered in the USA (Tischler and Ocumpaugh 2004), we are unaware of any attempts to improve this character through breeding programs. Since variability in this collection is located within accessions it is possible that, even though the commercial material and all accessions showed comparable levels of seed shattering, some individuals with higher seed retention may be identified for use as parents in future breeding programs.

In this study, there was some variability among populations in terms of CP concentration in the forage and accession CU actually produced forage of better quality than that from the commercial cultivar being marketed in the country. Although forage production does not necessarily predict secondary production (meat, milk or wool), forage with higher CP might be more digestible and give higher animal performance (Meissner 1997; Smith et al. 1997). Increments of 1% in in vitro digestibility of forage can lead to an increase in animal liveweight gain of 3.2% (Casler and Vogel 1999).

The high levels of variability within and among accessions of the collection as shown by the use of 8 ISSRs (Table 4) are similar to the genetic diversity observed in other species of open-pollinated grasses, e.g. zoysiagrass (Xie et al. 2012b) and bermudagrass (*Cynodon dactylon*) (Huang et al. 2010). Accession AN showed the highest level of variability, with approximately 59% of polymorphism, the highest MGD and 1 of the 3 accession-specific loci. Combining these features, AN emerged as a significant reservoir of variability in the collection.

As previously discussed, analysis using agro-morphological data failed to detect any type of association between accessions. In contrast, PCoA analysis showed some degree of grouping among accessions according to their site of collection as previously reported in the literature (García et al. 2007; Najaphy et al. 2012). In addition, the dendrogram obtained from the molecular data grouped individuals from the same origin, although the grouping was attained at a high distance, supporting the fact that 58% of the variation was found between individuals within groups, with only 42% between groups. A rather cohesive group was formed by accessions CM and DF, the latter being a recently sown pasture, so it could be hypothesized that individuals of DF retained characteristics of the commercial material, given that they

were not exposed to grazing or environmental conditions for enough time to change their genetic composition. On the opposite side of the plot, UL could be identified as an accession from a rather old pasture that had probably been under heavy grazing pressure for several years. Accessions in the center of the plot aggregated into 2 groups: the one below showed populations CH, AN and EM in clusters; CH and EM had been recently sown from seeds produced at the AN site, so shared the same genetic material. A quite separate group was formed by individuals of accession SO obtained from imported seeds with a history of heavy grazing that might have increased the proportion of individuals with grazing tolerance. Finally, the history of CU is undocumented.

The AMOVA study indicated that more than 58% of molecular variation in *P. coloratum* resides within accessions. This finding is consistent with the predominant allogamous form of reproduction in the species (Hamrick and Godt 1990). Similar patterns of genetic variation distribution were reported in other cross-pollinated species. Xie et al. (2012a) reported 65% variation within accessions of orchardgrass (*Dactylis glomerata*) using SSR. *Panicum coloratum* var. *coloratum* is reported as having a high rate of sexual reproduction (Tischler and Ocumpaugh 2004), although the ability to reproduce asexually by apomixis should not be disregarded. In addition, vegetative reproduction through rhizomes and rooting at the nodes when they come into contact with the ground has been observed (Petruzzi et al. 2003; Komatsu et al. 2007).

Results of characterization using molecular markers and agro-morphological descriptors produced different configurations (Figures 1A and 1B). In addition, results of the Mantel test ($r = 0.057$; $P = 0.082$) confirmed low correlations between the two types of data, indicating that each individual characterization offers information that can be considered complementary. Semagn (2002) attributed the discrepancy between morphological and molecular variation to 2 possible factors: 1) molecular markers covering a large portion of the genome that includes coding and non-coding regions; and 2) molecular markers being less subject to artificial selection than morphological markers. According to Holderegger et al. (2006), most DNA markers are a random sample whose genome polymorphism sites have no phenotypic effects corresponding to neutral genetic variation, while quantitative morphological characters are usually affected by selection and variability within them is ultimately responsible for adaptation. Interestingly, joint characterizations rendered a consensus configuration explaining 77.3% of the variability, emphasizing the importance of studying the different types of descriptors together in

order to get the best characterization and interpretation of the genetic diversity of the collection.

It is widely acknowledged that good characterization of a live collection is an important first step towards germplasm management and preservation. The collection of *P. coloratum* var. *coloratum* at INTA Rafaela was found to be a good resource and a reservoir of genetic variation for valuable characters to be further used in breeding for different objectives such as augmentation of forage production, forage quality or seed weight. The use of both molecular and agro-morphological traits was a valuable tool as both types of characterizations were complementary and jointly rendered a good discrimination of accessions.

Acknowledgments

We thank Clarisa Barrios, Luisina Cardamone and Bárbara Tolozano for technical assistance with measurements in the field. Research was supported by INTA, project PNPA 1126072.

References

- Abbott L; Pistorale S. 2010. Determination of variance components and heritability in prairie grass (*Bromus catharticus* Vahl.). *Agriscientia* 27:115–123. goo.gl/rA9baM
- Armando LV; Carrera AD; Tomas MA. 2013. Collection and morphological characterization of *Panicum coloratum* L. in Argentina. *Genetic Resources and Crop Evolution* 60:1737–1747. DOI: [10.1007/s10722-013-9982-3](https://doi.org/10.1007/s10722-013-9982-3)
- AOAC (Association of Official Analytical Chemists). 1990. Official methods of analysis. 15th Edn. AOAC Inc., Arlington, VA, USA.
- Balzarini M; Bruno C; Peña A; Teich I; Di Rienzo JA. 2010. Estadística en biotecnología. Aplicaciones en Info-Gen. Editorial Brujas, Córdoba, Argentina. goo.gl/aCyQE7
- Bogdan AV. 1977. Tropical pasture and fodder plants. Grasses and legumes. p. 175–181. Longman, London and New York. lib.ugent.be/catalog/rug01:000083517
- Bramardi SJ; Bernet GP; Asíns MJ; Carbonell EA. 2005. Simultaneous agronomic and molecular characterization of genotypes via the Generalised Procrustes Analysis. *Crop Science* 45:1603–1609. DOI: [10.2135/cropsci2004.0633](https://doi.org/10.2135/cropsci2004.0633)
- Carr BC 2014. Plant guide for kleingrass (*Panicum coloratum* L.). USDA Natural Resources Conservation Service, James E. “Bud” Smith Plant Materials Center, Knox City, TX, USA. <https://goo.gl/AUhjiS>
- Casler MD. 2005. Ecotypic variation among switchgrass populations from the Northern USA. *Crop Science* 45:388–398. DOI: [10.2135/cropsci2005.0388](https://doi.org/10.2135/cropsci2005.0388)
- Casler MD; Vogel KP. 1999. Accomplishments and impact from breeding for increased forage nutritional value. *Crop*

- Science 39:12–20. DOI: [10.2135/cropsci1999.0011183X003900010003x](https://doi.org/10.2135/cropsci1999.0011183X003900010003x)
- Excoffier L; Smouse PE; Quattro JM. 1992. Analysis of molecular variance inferred from metric distances among DNA haplotypes: Application to human mitochondrial DNA restriction data. *Genetics* 131:479–491. [goo.gl/kR7WGB](https://doi.org/10.1093/genetics/131.3.479)
- Ferri CM; Stritzler NP; Pagella JH. 2006. Tasa de aparición de hojas en *Panicum coloratum* L. cv. Verde. 29º Congreso Argentino de Producción Animal, Mar del Plata, Argentina. *Revista Argentina de Producción Animal*. [goo.gl/qanrU3](https://doi.org/10.1007/s10722-006-9147-8)
- Garayalde AF; Poverene M; Cantamutto M; Carrera AD. 2011. Wild diversity in Argentina revealed by ISSR and SSR markers: An approach for conservation and breeding programmes. *Annals of Applied Biology* 158:305–317. DOI: [10.1111/j.1744-7348.2011.00465.x](https://doi.org/10.1111/j.1744-7348.2011.00465.x)
- García MV; Balatti PA; Arturi MJ. 2007. Genetic variability in natural populations of *Paspalum dilatatum* Poir. analyzed by means of morphological traits and molecular markers. *Genetic Resources and Crop Evolution* 54:935–946. DOI: [10.1007/s10722-006-9147-8](https://doi.org/10.1007/s10722-006-9147-8)
- Goossens AP. 1934. Notes on African grasses: XVI. *Bulletin of Miscellaneous Information* 5:195–202. DOI: [10.2307/4111662](https://doi.org/10.2307/4111662)
- Hamrick JL; Godt MJW. 1990. Allozyme diversity in plant species. In: Brown ADH; Clegg MT; Kahler AL; Weir BS, eds. *Plant populations genetics, breeding and germplasm resources*. Sinauer Associates Inc., Sunderland, MA, USA. p. 43–63. [goo.gl/Neqrbj](https://doi.org/10.1007/s10980-005-5245-9)
- Holderegger R; Kamm U; Gugerli F. 2006. Adaptive vs. neutral genetic diversity: Implications for landscape genetics. *Landscape Ecology* 21:797–807. DOI: [10.1007/s10980-005-5245-9](https://doi.org/10.1007/s10980-005-5245-9)
- Huang CQ; Liu GD; Bai CJ; Wang WQ; Zhou SY; Yu DQ. 2010. Estimation of genetic variation in *Cynodon dactylon* accessions using the ISSR technique. *Biochemical Systematics and Ecology* 38:993–999. DOI: [10.1016/j.bse.2010.09.013](https://doi.org/10.1016/j.bse.2010.09.013)
- Hussey MA; Holt EC. 1986. Selection for increased seed weight in Kleingrass. *Crop Science* 6:1162–1163. DOI: [10.2135/cropsci1986.0011183X002600060017x](https://doi.org/10.2135/cropsci1986.0011183X002600060017x)
- Komatsu T; Ubi BE; Enoky H. 2007. Crossability and amplified fragment length polymorphism variation among four types of *Panicum coloratum* L. and meiotic chromosome pairing of their F1 hybrids. *Grassland Science* 53:97–102. DOI: [10.1111/j.1744-697X.2007.00079.x](https://doi.org/10.1111/j.1744-697X.2007.00079.x)
- Mantel N. 1967. The detection of disease clustering and a generalized regression approach. *Cancer Research* 27:209–220. [goo.gl/iFZYHs](https://doi.org/10.1007/s10668-007-9133-0)
- Manuel-Navarrete D; Gallopín GC; Blanco M; Díaz-Zorita M; Ferraro D; Herzer H; Latorra P; Murmis MR; Podestá GP; Rabinovich J; Satorre EH; Torres F; Viglizzo EF. 2009. Multi-causal and integrated assessment of sustainability: The case of agriculturization in the Argentine Pampas. *Environment, Development and Sustainability* 11:621–638. DOI: [10.1007/s10668-007-9133-0](https://doi.org/10.1007/s10668-007-9133-0)
- Meissner HH. 1997. Recent research on forage utilization by ruminant livestock in South Africa. *Animal Feed Science and Technology* 69:103–119. DOI: [10.1016/S0377-8401\(97\)81626-4](https://doi.org/10.1016/S0377-8401(97)81626-4)
- Morales-Nieto C; Quero-Carrillo A; Pérez-Pérez J; Hernández-Garay A; Le-Blanc O. 2008. Morphological characterization of native populations of sideoat grama [*Bouteloua curtipendula* (Michx.) Torr.] in Mexico. *Agrociencia* 42:767–775. [goo.gl/fRAdTk](https://doi.org/10.1016/S0377-8401(97)81626-4)
- Najaphy A; Parchin RA; Farshadfar E. 2012. Comparison of phenotypic and molecular characterizations of some important wheat cultivars and advanced breeding lines. *Australian Journal of Crop Science* 6:326–332. [goo.gl/7sN4eL](https://doi.org/10.1016/S0377-8401(97)81626-4)
- Peakall R; Smouse PE; Huff DR. 1995. Evolutionary implications of allozyme and RAPD variation in diploid populations of dioecious buffalo grass *Buchloë dactyloides*. *Molecular Ecology* 4:135–148. DOI: [10.1111/j.1365-294X.1995.tb00203.x](https://doi.org/10.1111/j.1365-294X.1995.tb00203.x)
- Peakall R; Smouse PE. 2006. GENALEX 6: Genetic analysis in Excel. Population genetic software for teaching and research. *Molecular Ecology Notes* 6:288–295. DOI: [10.1111/j.1471-8286.2005.01155.x](https://doi.org/10.1111/j.1471-8286.2005.01155.x)
- Petruzzini HJ; Stritzler NP; Adema EO; Ferri CM; Pagella JH. 2003. Mijo perenne - *Panicum coloratum*. Instituto Nacional de Tecnología Agropecuaria (INTA), Anguil, La Pampa, Argentina. [goo.gl/CeTx7y](https://doi.org/10.1016/S0377-8401(97)81626-4)
- Pritchard AJ; Lacy IHD. 1974. The cytology, breeding system and flowering behaviour of *Panicum coloratum*. *Australian Journal of Botany* 22:57–66. DOI: [10.1071/BT9740057](https://doi.org/10.1071/BT9740057)
- Rearte D. 2007. Situación de la ganadería argentina en el contexto mundial. Instituto Nacional de Tecnología Agropecuaria (INTA), Buenos Aires, Argentina. [goo.gl/UdKrWF](https://doi.org/10.1016/S0377-8401(97)81626-4)
- Sambrook J; Fritsch EF; Maniatis T. 1989. *Molecular cloning: A laboratory manual*. 2nd Edn. Cold Spring Harbor Laboratory Press, New York, USA. DOI: [10.1016/0092-8674\(90\)90210-6](https://doi.org/10.1016/0092-8674(90)90210-6)
- Semagn K. 2002. Genetic relationships among ten endotypes as revealed by a combination of morphological, RAPD, and AFLP markers. *Hereditas* 137:149–156. DOI: [10.1034/j.1601-5223.2002.01600.x](https://doi.org/10.1034/j.1601-5223.2002.01600.x)
- Silvertown J; Lovett Doust J. 1993. *Introduction to plant population biology*. Blackwell Scientific Publications, Oxford, UK.
- Smith KF; Reed KFM; Foot JZ. 1997. An assessment of the relative importance of specific traits for the genetic improvement of nutritive value in dairy pasture. *Grass and Forage Science* 52:167–175. DOI: [10.1111/j.1365-2494.1997.tb02347.x](https://doi.org/10.1111/j.1365-2494.1997.tb02347.x)
- Tischler CR; Young BA. 1983. Effects of chemical and physical treatments on germination of freshly harvested kleingrass seed. *Crop Science* 23:789–792. DOI: [10.2135/cropsci1983.0011183X002300040045x](https://doi.org/10.2135/cropsci1983.0011183X002300040045x)
- Tischler CR; Voigt PW. 1995. Modifying seedling photomorphogenesis in kleingrass by recurrent selection. *Crop Science* 35:1613–1617. DOI: [10.2135/cropsci1995.0011183X003500060016x](https://doi.org/10.2135/cropsci1995.0011183X003500060016x)
- Tischler CR; Ocumpaugh WR. 2004. Kleingrass, blue panic and vine mesquite. In: Moser LE; Burson BL; Sollenberger LE, eds. *Warm-season (C₄) grasses*. Agronomy Monograph

45. ASA, CSSA, SSSA, Madison, WI, USA. p. 623–649. DOI: [10.2134/agronmonogr45.c18](https://doi.org/10.2134/agronmonogr45.c18)
- Van Soest PJ; Robertson JB; Lewis B. 1991. Methods for dietary fiber, neutral detergent fiber and nonstarch polysaccharides in relation to animal nutrition. *Journal of Dairy Science* 74:3583–3597. DOI: [10.3168/jds.S0022-0302\(91\)78551-2](https://doi.org/10.3168/jds.S0022-0302(91)78551-2)
- Vogel KP; Burson BL. 2004. Breeding and genetics. In: Moser LE; Burson BL; Sollenberger LE, eds. Warm-season (C₄) grasses. *Agronomy Monograph* 45. ASA, CSSA, SSSA, Madison, WI, USA. p. 51–94. DOI: [10.2134/agronmonogr45.c3](https://doi.org/10.2134/agronmonogr45.c3)
- Wójtowicz T; Binek A; Moś M. 2009. Correlations and path analysis of the components of *Festuca pratensis* seed yield. *Grassland Science in Poland* 12:223–232. goo.gl/wNvvCQ
- Xie WG; Lu XF; Zhang XQ; Huang LK; Cheng L. 2012a. Genetic variation and comparison of orchardgrass (*Dactylis glomerata* L.) cultivars and wild accessions as revealed by SSR markers. *Genetics and Molecular Research* 11:425–433. DOI: [10.4238/2012.February.24.1](https://doi.org/10.4238/2012.February.24.1)
- Xie Y; Liu L; Fu J; Li H. 2012b. Genetic diversity in Chinese natural zoysiagrass based on inter-simple sequence repeat (ISSR) analysis. *African Journal of Biotechnology* 30: 7659–7669. goo.gl/qzZzSF
- Young BA. 1986. A source of resistance to seed shattering in kleingrass, *Panicum coloratum*. *Euphytica* 35:687–694. DOI: [10.1007/BF00028576](https://doi.org/10.1007/BF00028576)
- Young BA. 1994. Genetic variation in a *Panicum coloratum* L. population with a limited germplasm base. *Euphytica* 75: 71–76. DOI: [10.1007/BF00024533](https://doi.org/10.1007/BF00024533)

Supplementary Table 1: Polymorphic inter-simple sequence repeats (ISSR) markers used in this study.

Primer	Sequence (5' 3')	→	Annealing temperature
ISSR-4	(GA) ⁹ T		51 °C
SSR-20	(ACTG) ² ACCGACTG		45 °C
ISSR-9	(CAA) ⁵		35 °C
ISSR-8	(GTG) ³ GC		33 °C
ISSR-7	(CT) ⁸ TG		49 °C
ISSR-14	(CAC) ⁴ GC		43 °C
ISSR-10	(AGC) ⁵		45 °C
ISSR-19	(GATA) ² (GACA) ²		39 °C
ISSR-16	(GACA) ⁴		43 °C
ISSR-5	(AG) ⁷ TC		43 °C
ISSR-11	(ACC) ⁵		45 °C
ISSR-18	(AAAG) ⁴		35 °C
ISSR-3	(CT) ⁸ T		45 °C
ISSR-15	(GTAT) ⁴		35 °C
ISSR-2	(GT) ⁸ G		47 °C
Pan5.8-F	CCCCTTCACCTTTTTGTTGGAG		56 °C
Pan5.8-R	AAATGGGTCCTTGAGGCTATGGAG		58 °C

The Pan5.8-F and Pan5.8-R primers from 5.8s ribosomal gene were designed and used to confirm *Panicum coloratum*.

(Received for publication 30 June 2017; accepted 24 February 2018; published 31 May 2018)

© 2018



Tropical Grasslands-Forrajés Tropicales is an open-access journal published by *International Center for Tropical Agriculture (CIAT)*. This work is licensed under the Creative Commons Attribution 4.0 International (CC BY 4.0) license. To view a copy of this license, visit <https://creativecommons.org/licenses/by/4.0/>