



OPEN

The pest kill rate of thirteen natural enemies as aggregate evaluation criterion of their biological control potential of *Tuta absoluta*

Joop C. van Lenteren^{1✉}, Alberto Lanzoni², Lia Hemerik^{3, 4}, Vanda H. P. Bueno⁴, Johanna G. Bajonero Cuervo⁵, Antonio Biondi⁶, Giovanni Burgio², Francisco J. Calvo⁷, Peter W. de Jong¹, Silvia N. López⁸, M. Gabriela Luna⁹, Flavio C. Montes⁵, Eliana L. Nieves⁹, Pascal Osa Aigbedion-Atalor¹⁰, Maria B. Riquelme Virgala^{11, 12}, Norma E. Sánchez⁹ & Alberto Urbaneja¹³

Ecologists study how populations are regulated, while scientists studying biological pest control apply population regulation processes to reduce numbers of harmful organisms: an organism (a natural enemy) is used to reduce the population density of another organism (a pest). Finding an effective biological control agent among the tens to hundreds of natural enemies of a pest is a daunting task. Evaluation criteria help in a first selection to remove clearly ineffective or risky species from the list of candidates. Next, we propose to use an aggregate evaluation criterion, the pest kill rate, to compare the pest population reduction capacity of species not eliminated during the first selection. The pest kill rate is the average daily lifetime killing of the pest by the natural enemy under consideration. Pest kill rates of six species of predators and seven species of parasitoids of *Tuta absoluta* were calculated and compared. Several natural enemies had pest kill rates that were too low to be able to theoretically reduce the pest population below crop damaging densities. Other species showed a high pest reduction capacity and their potential for practical application can now be tested under commercial crop production conditions.

Since 1798¹, one of the key questions in ecology has been how populations of animals and plants are regulated. From the 1930s to the 1990s several theories emerged, with as the two most important ones the density-dependent regulation of populations² and population limitation by density-independent factors³. Heated debates took place at congresses and in the literature, which still continue. However, ecologists today are of the opinion that perfect density dependence does rarely or not occur, and that populations are regulated by interacting density-independent and density-dependent factors. For an extensive discussion of the population regulation debate see

¹Laboratory of Entomology, Wageningen University, P.O. Box 16, 6700AA Wageningen, The Netherlands. ²Department of Agricultural and Food Sciences, University of Bologna, Viale Fanin, 42, 40127 Bologna, Italy. ³Biometris, Department of Mathematical and Statistical Methods, Wageningen University, P.O. Box 16, Wageningen 6700 AA, The Netherlands. ⁴Laboratory of Biological Control, Department of Entomology, Federal University of Lavras, P. O. Box 3037, Lavras, MG 37200-000, Brazil. ⁵Department of Entomology and Acarology, Luiz de Queiroz College of Agriculture (USP/ESALQ), Piracicaba, Brazil. ⁶Department of Agriculture, Food and Environment, University of Catania, 95123 Catania, Italy. ⁷Research and Development, Koppert Spain S.L. Calle Cobre, 22. Polígono Industrial, Ciudad del Transporte, 04745 La Mojenera, Almería, Spain. ⁸Instituto Nacional de Tecnología Agropecuaria (INTA), Instituto de Microbiología y Zoología Agrícola (IMYZA), Ituzaingó, Buenos Aires, Argentina. ⁹Centro de Estudios Parasitológicos y de Vectores (CEPAVE – CONICET, UNLP and CICPBA), Boulevard 120 e/ 60 y 64, 1900 La Plata, Argentina. ¹⁰International Centre of Insect Physiology and Ecology (icipe), P.O. Box 30772-00100, Nairobi, Kenya. ¹¹Departamento de Tecnología, Universidad Nacional de Luján y Facultad de Agronomía, Universidad de Buenos Aires, Rutas 5 y 7, 6700 Luján, Argentina. ¹²Programa de Ecología Terrestre, Departamento de Ciencias Básicas e Instituto de Ecología y Desarrollo Sustentable (INEDES), Universidad Nacional de Luján, Rutas 5 y 7, 6700 Luján, Argentina. ¹³Centro de Protección Vegetal y Biotecnología, Instituto Valenciano de Investigaciones Agrarias (IVIA), Carretera CV-315, Km 10'7, 46113 Moncada, Valencia, Spain. ✉email: Joop.vanLenteren@wur.nl

Turchin⁴. In several disciplines of applied ecology, population regulation theories are playing an important role, including nature conservation, restoration of biodiversity, ecology of reintroduction of locally extinct species to their previous habitats, invasive species biology and biological control. According to Bellows and Hassell⁵ “population equilibria and population regulation lie at the heart of biological control”. In biological control, an organism (a natural enemy) is used to reduce the population density of another organism (a pest)⁶, which contributes to manage native and exotic pests in natural and managed ecosystems. In this paper we discuss a new method for efficacy evaluation of candidate organisms for use in the reduction of populations of pests and apply this method to natural enemies of a serious, quickly spreading invasive pest over the world, the South American tomato moth *Tuta absoluta* (Meyrick) (Lepidoptera: Gelechiidae)^{7,8}. Although the paper focuses on biological control of pests, the same method can be used, for example, to estimate population reduction effects of invasive organisms on native organisms in natural and agricultural ecosystems.

The need for biological control of *Tuta absoluta*. The distribution of *T. absoluta* was limited to South America until 2006, then the species was accidentally introduced into Spain and currently occurs on most continents and is still spreading at a high rate^{7,8}. Without control methods, the pest may lead to a complete loss of yield. As the larvae of the pest spend most of their time within the leaf or in the fruit, chemical control is difficult and demands up to five sprays per week and 36 times per production cycle of 12 weeks to be effective and this results in quick development of resistance to pesticides, environmental pollution and human health risks⁹. One of the alternatives for controlling *T. absoluta* is to use biological control, but finding an effective natural enemy for a new, invasive pest is not an easy task as a pest often has tens to hundreds of species attacking it⁶. *Tuta absoluta* is said to be associated with almost 200 species of predators and parasitoids in their native and newly invaded areas^{7,8}. Currently, only four species of all pest associated natural enemies are commercially used: the egg parasitoids *Trichogramma pretiosum* Riley (Hymenoptera: Trichogrammatidae) and *Trichogramma achaeae* (Nagaraja and Nagarkatti) are applied on a very small scale, and the predatory mirids *Nesidiocoris tenuis* Reuter (Hemiptera: Miridae) and *Macrolophus pygmaeus* (Rambur) are used on a larger scale^{7,8}. All four species were found fortuitously (e.g. the mirid *N. tenuis* was found preying on *T. absoluta* in Spain by Urbaneja¹⁰ a few days after the first *T. absoluta* individuals were found in a tomato crop in 2009), or as a result of testing organisms that are easily mass produced (e.g. the egg parasitoid *T. pretiosum* in Latin America¹¹). However, all four are not optimal for *T. absoluta* control, because release of the predator *N. tenuis* can cause serious plant damage¹², *M. pygmaeus* needs alternative food to be able to reproduce¹³, and the parasitoids *T. pretiosum* and *T. achaeae* have to be released frequently and in very large numbers^{14,15}. Therefore, other, more effective natural enemies are acutely needed, as well as efficient methods to identify promising candidates from the multitude of pest associated species. We propose a three step approach: (1) a quick scan procedure to separate clearly ineffective or hazardous species, from potentially promising candidates based on available information, (2) a phase during which the pest reduction capacity of the candidates selected in step 1 is determined, and (3) a final stage where the performance of the most promising candidates is tested under commercial tomato production conditions.

Quick scan procedure to select promising candidates from the pool of pest associated species. We previously published a list of 15 evaluation criteria, ranging from issues as “climatic adaptation to area where natural enemy will be used” to “complexity of importation and registration procedures”, for a quick scan of all organisms said to be associated with *T. absoluta*¹⁶. Applying these criteria, 180 species may be removed from lists of potentially effective natural enemies of this pest mentioned in publications^{8,16}. This is, among others, because either they (1) have not been shown to attack *T. absoluta*, (2) are very likely to cause unacceptable nontarget effects, (3) develop too slowly or not at all on the targeted prey, (4) are trapped by the glandular trichomes on tomato and die, (5) do not kill sufficient pest organisms, or (6) are too expensive to mass produce. An example related to the fourth cause is the predator *Orius insidiosus* (Say) (Hemiptera: Anthocoridae): although it may kill a considerable number of pest eggs, it is caught by the sticky hairs on the stems of tomato and dies within minutes after release on the plant. Too slow immature development, high immature mortality and very low predation rates on pest eggs by *Geocoris punctipes* (Say) (Hemiptera: Geocoridae) illustrate causes three and five. Slow immature development, high mortality and low parasitism rates also make the parasitoids *Dineulophus phthorimaeae* de Santis (Hymenoptera: Eulophidae) and, when not provided with alternative food, *T. pretiosum* unlikely successful candidates for control of the pest. The quick scan results in less than 20 species remaining on the list of potentially successful natural enemies¹⁶.

The pest kill rate as an aggregate parameter to estimate pest reduction capacity. To obtain an idea of the biological control potential of the remaining 20 species, van Lenteren et al.¹⁶ proposed to rank them by the pest kill rate as aggregate evaluation criterion. The pest kill rate is the weighted daily average of the lifetime killing of the host or prey due to actions (predation, parasitism and nonreproductive prey and host killing) of a natural enemy. Tommasini et al.¹⁷ used a preliminary version of the pest kill rate to compare species of the genus *Orius* as predator of thrips pests. Next, van Lenteren¹⁸ explained that the kill rate could be used not only to rank the potential control capacity of predators, but also of parasitoids. Then, Biondi et al.¹⁹ calculated the host kill rate of the parasitoid *Bracon nigricans* Szépligeti (Hymenoptera: Braconidae), which included both parasitism and host killing due to stinging and host feeding. The pest kill rate, k_m , they found (0.121) is much higher than the intrinsic rate of population increase, r_m , of *B. nigricans* (0.052). Van Lenteren et al.¹⁶ explained why the r_m of predators is not a useful criterion for comparison of their biocontrol capacity: it only provides information on how quickly a predator population can grow and does not tell how many prey items it can kill. In parasitoids, the r_m can be used for comparison of species that do not kill hosts by nonreproductive activities. However, many species do not only eventually kill the host as a result of parasitism, but additionally kill hosts by feeding or stinging

Natural enemy	Short characterization	Reference / data
Predators		
<i>Campyloneuropsis infumatus</i> (Carvalho) (Hemip.: Miridae)	zoophytophagous ² , polyphagous, preference for eggs and L1 of <i>T. absoluta</i> Neotropical	van Lenteren et al. 2019 complete cohorts, low uncertainty ¹
<i>Engytatus varians</i> (Distant) (Hemip.: Miridae)	zoophytophagous, polyphagous, preference for eggs and L1 of <i>T. absoluta</i> Neotropical	van Lenteren et al. 2019 complete cohorts, low uncertainty
<i>Macrolophus basicornis</i> (Stål) (Hemip.: Miridae)	zoophytophagous, polyphagous, preference for eggs and L1 of <i>T. absoluta</i> Neotropical	van Lenteren et al. 2019 complete cohorts, low uncertainty
<i>Macrolophus pygmaeus</i> (Rambur) (Hemip.: Miridae)	zoophytophagous, polyphagous, preference for eggs and L1 of <i>T. absoluta</i> Palearctic	Mollá et al. 2014; complete cohort immatures, adult predation incomplete, medium uncertainty
<i>Nesidiocoris tenuis</i> Reuter (Hemip.: Miridae)	zoophytophagous, polyphagous, preference for eggs and L1 of <i>T. absoluta</i> Palearctic	Mollá et al. 2014; complete cohort immatures, adult predation incomplete, medium uncertainty
<i>Tupiocoris cucurbitaceus</i> (Spinola) (Hemip.: Miridae)	zoophytophagous, polyphagous, preference for eggs and L1 of <i>T. absoluta</i> Neotropical	Lopez et al. 2019; fertility life table complete, partial predation data, high uncertainty
Parasitoids		
<i>Bracon nigricans</i> Szépligeti (Hym.: Braconidae)	idiobiont ³ , synovigenic ³ , oligophagous, gregarious ⁷ larval ectoparasitoid with non-reproductive host killing/host feeding, prefers L3-L4 of <i>T. absoluta</i> ; Palearctic	Biondi et al. 2013 complete cohorts, low uncertainty
<i>Dineulophus phthorimaeae</i> de Santis (Hym.: Eulophidae)	idiobiont, synovigenic, oligophagous, solitary ⁸ larval ectoparasitoid with non-reproductive host killing/host feeding; prefers L3 of <i>T. absoluta</i> ; America	Luna et al. 2010, Savino et al. 2012 complete cohort adults, incomplete immature data; medium uncertainty
<i>Dolichogenidea</i> (<i>Apanteles</i>) <i>gelechiidivoris</i> Marsh. (Hym.: Braconidae)	koibiont ⁴ , proovigenic ⁵ , oligophagous, solitary larval endoparasitoid prefers L1 and L2 of <i>T. absoluta</i> ; America	Aigbedion-Atalor et al. 2020 complete cohorts, low uncertainty
<i>Necremnus tutae</i> Ribes and Bernardo (= <i>N. artynes</i>) (Walker) (Hym.: Eulophidae)	idiobiont, synovigenic, oligophagous, predominantly solitary larval ectoparasitoid with non-reproductive host killing/host feeding; prefers L3 of <i>T. absoluta</i> ; Palearctic	Calvo et al. 2013 complete cohorts, low uncertainty
<i>Pseudapanteles dingus</i> (Muesebeck) (Hym.: Braconidae)	koibiont, moderately proovigenic, oligophagous solitary larval endoparasitoid America, main natural enemy spontaneously occurring parasitoid in tomato crops	Nieves et al. 2015 complete cohorts, low uncertainty
<i>Trichogramma pretiosum</i> Riley (Hym.: Trichogrammatidae)	proovigenic, polyphagous solitary endoparasitoid of eggs, concurrent non-destructive when host feeding food (honey) is available, America	Bajonero 2016 complete cohorts, low uncertainty
<i>Trichogramma pretiosum</i> Riley (Hym.: Trichogrammatidae)	proovigenic, polyphagous solitary endoparasitoid of eggs, concurrent non-destructive host feeding and non-reproductive host killing/feeding when no alternative food is available, America	Montes 2020 complete cohorts, low uncertainty
<i>Trichogrammatoidea bactrae</i> Nagaraja (Hym.: Trichogrammatidae)	proovigenic, polyphagous solitary endoparasitoid of eggs, Asia	Riquelme Virgala & Botto 2010 complete cohorts, low uncertainty

Table 1. Natural enemies of *Tuta absoluta* used in this study. ¹uncertainty: low = all data needed to calculate pest kill rate available; medium = part of data needed to be estimated; high = many data needed to be estimated; complete cohort data were available for predation and fertility of the predators *C. infumatus*, *E. varians* and *M. basicornis*; for *M. pygmaeus* and *N. tenuis* complete cohort data were available for predation of the nymphal stages and fertility, and partial data for predation by adults; for *T. cucurbitaceus*, complete data were available for fertility and partial data for predation by nymphs and adults. For six of the seven species of parasitoids, complete cohort data were available for parasitism, non-reproductive host killing and fertility; for *D. phthorimaeae* complete cohort data were available for the adult stage, but some data for immature development had to be estimated; ²zoophytophagous = eats arthropods and feeds on plants; ³idiobiont = paralysis of host at oviposition, no further development of host; ⁴koibiont = host continues development after being parasitized; ⁵proovigenic = most eggs are mature at emergence; ⁶synovigenic = eggs mature after emergence; ⁷gregarious = more than one parasitoid can develop on a host; ⁸solitary = one parasitoid develops per host.

them for host examination^{20,21}. Therefore, also in parasitoids it is better to use the pest kill rate for comparison of their pest reduction capacity.

Use of the pest kill rate parameter to compare effectivity of predators and parasitoids of *Tuta absoluta*. During the past two years detailed life-table data for development, mortality, sex ratio, nymphal and adult predation, parasitism capacity, nonreproductive host killing and longevity for predators and parasitoids of *T. absoluta* have been collected by contacting researchers who might have these data and were willing to provide them for determination of pest kill rates. Such data are relatively rare as they need to include the above-mentioned details for each organism of the cohort that was studied, which is an expensive, time and space consuming effort. Sadly, these detailed data are often neither included in a publication, nor available in a data repository. Life-table data were obtained for six species of mirid predators, four species of parasitoids that only kill hosts by parasitism and three species of parasitoids that both kill hosts by parasitism and nonreproductive host killing (Table 1). These species would not all emerge as potential candidates for control of *T. absoluta* in classical and augmentative control programmes when evaluated with the criteria discussed in van Lenteren et al.¹⁶. However, by using the life-table data of these natural enemies it is possible to illustrate how the pest kill rate can be used in the future for comparison and ranking of the biological control capacity of predators and parasitoids.

Species	R_0	T	r_m Birch	r_m Lotka-Euler	λ
Predators					
<i>C. infumatus</i>	67.67	39.13	0.1077	0.1119	1.1183
<i>E. varians</i>	39.82	38.83	0.0949	0.0978	1.1028
<i>M. basicornis</i>	58.71	41.94	0.0971	0.1012	1.1065
<i>M. pygmaeus</i>	1.85	41.07	0.0149	0.0150	1.0151
<i>N. tenuis</i>	18.05	27.54	0.1050	0.1073	1.1133
<i>T. cucurbitaceus</i>	6.81	37.42	0.0513	0.0545	1.0560
Parasitoids					
<i>B.nigricans*</i>	4.44	29.73	0.0502	0.0542	1.0556
<i>D.phthorimaeae*</i>	0.67	22.40	- 0.0180	- 0.0181	0.9822
<i>D.gelechiidivoris</i>	16.45	27.78	0.1008	0.1021	1.1075
<i>N. tutae*</i>	32.00	22.69	0.1528	0.1785	1.1955
<i>P. dignus</i>	53.05	29.51	0.1346	0.1360	1.1457
<i>T. pretiosum—food*</i>	0.85	10.98	- 0.0151	- 0.0151	0.9850
<i>T. pretiosum</i> on <i>Ephesitia</i> + food	23.01	16.06	0.1953	0.2085	1.2318
<i>T. pretiosum</i> F1 on <i>Tuta</i> + food	18.81	18.32	0.1602	0.1699	1.1851
<i>T. bactrae</i>	18.99	12.74	0.2311	0.2409	1.2746

Table 2. Life-table parameters for six predator species and seven parasitoid species. R_0 = net reproductive ratio; T = mean generation time; r_m = intrinsic rate of increase; λ = the finite rate of increase; * parasitoid with non-reproductive host killing/feeding; r_m values found for the pest *T. absoluta* are provided in supplementary material file S16, together with references for the papers presenting these values.

In this paper, pest kill rates of 13 predators and parasitoids of *T. absoluta* are calculated and compared. Moreover, species characteristics other than their pest kill rates, as well as information on their current commercial application is used to speculate which of the evaluated species might be promising candidates for biological control of this pest.

Results

Intrinsic rate of population increase, r_m , of the pest, predators and parasitoids by the Birch and Lotka-Euler approaches. Published values of the r_m of *T. absoluta* are summarized in supplementary material (Table S16), showing that most values are in the range of 0.13–0.19. For the natural enemies, the r_m calculated by the Lotka-Euler approach is higher than the r_m calculated by the Birch approach in all but one case (Table 2). The exception is *T. pretiosum* when offered no honey as food and this can be explained simply by the short life span of one day. Both for the predators and parasitoids, there is a strong and significant positive correlation between the r_m values calculated by both approaches ($P < 0.001$; Fig. 1). From now on, only the Lotka-Euler r_m values will be considered, because the Lotka-Euler approach results in a more precise estimate of r_m than the Birch approximation.

All the r_m values of the predators are lower than the r_m of the pest (Table 2 and Supplementary material Table S16) and, consequently, predator populations in the presence of ample *T. absoluta* eggs will be growing slower than the pest in the absence of natural enemies. The same reasoning holds for several parasitoid species. However, four out of the seven species of parasitoids have similar or higher r_m values than that of the pest: *N. tutae*, *P. dignus*, *T. pretiosum* with provision of honey as additional food, and *T. bactrae*. All natural enemies, except for *D. phthorimaeae* and *T. pretiosum* without additional food, have an R_0 larger than 1 and a positive r_m , so their population size will increase when only *T. absoluta* eggs and/or larvae are available for predation or parasitism. Tomato plants do not produce (extra-) floral nectar, but in a tomato crop other pests may be present that produce honey which can be used as additional food for *D. phthorimaeae* and *T. pretiosum*, resulting in higher R_0 and r_m values. With the exception of *T. pretiosum* (Supplementary material Table S11), no experiments have been performed in tomato without additional food. The dramatic negative effect on the lifespan of and parasitism by *T. pretiosum* when honey is not offered as food is shown in Table 2.

Pest kill rate, k_m , of predators and parasitoids by the Birch and Lotka-Euler approaches. In all cases, the k_m calculated by the Lotka-Euler approach is higher than the k_m estimated by the Birch approach (Table 3), with the exception of *T. pretiosum* without food which is explained by the short life span of one day only. For the predators, there is a weak, nonsignificant, positive correlation between the k_m values calculated by both approaches ($P = 0.608$, Fig. 2), while the correlation is strong and positive for the parasitoids ($P < 0.001$, Fig. 2). From now on, only the Lotka-Euler k_m values will be considered, for the same reason as given in the section above.

The r_m and k_m values for predators show a weak, nonsignificant correlation ($P = 0.79$, Fig. 3a), while this correlation is strong for parasitoids ($P < 0.001$, Fig. 3b). The nonsignificant correlation found for predators can be explained by the fact that the total number of eggs killed has no linear relationship with the number of

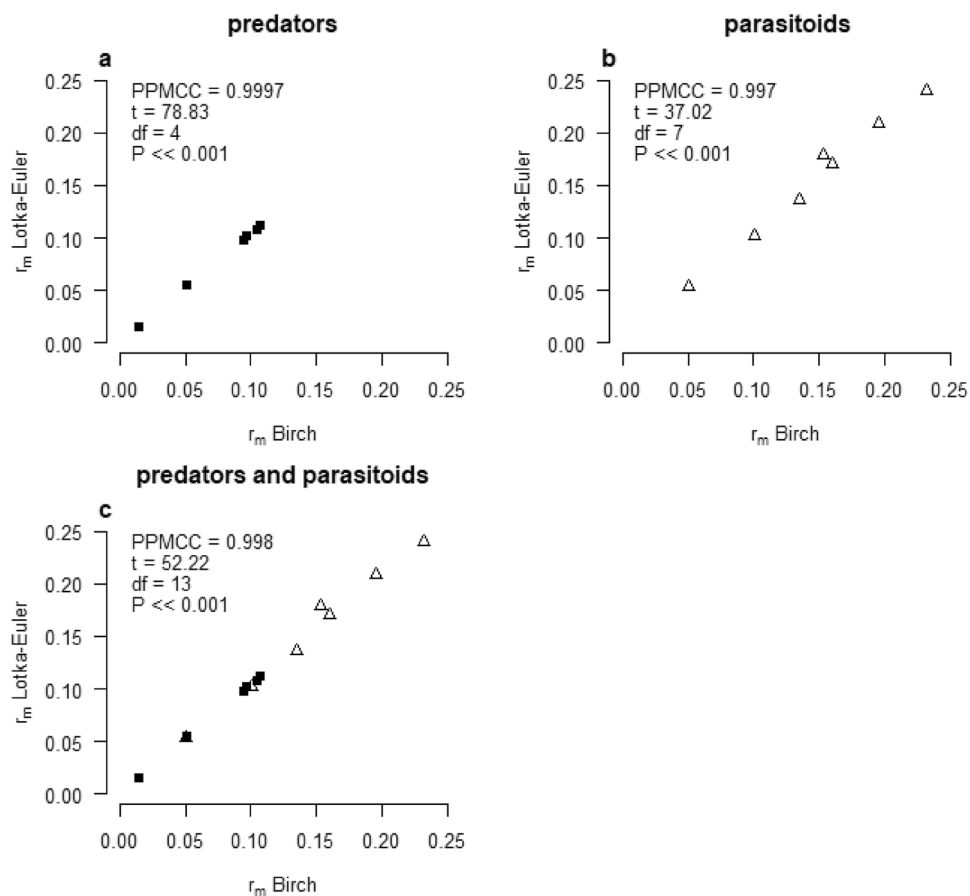


Figure 1. Correlation between values of r_m calculated by the Birch (x-axis) and the Lotka-Euler (y-axis) approach for predators (a), parasitoids (b) and predators + parasitoids (c).

Species	K_0	T_k	$k_m \ln K_0/T_k$	k_m Lotka-Euler
Predators				
<i>C. infumatus</i>	991.33	35.51	0.1942	0.2801
<i>E. varians</i>	748.04	31.34	0.1942	0.2940
<i>M. basicornis</i>	889.45	38.91	0.1745	0.2694
<i>M. pygmaeus</i>	445.06	30.14	0.2023	0.2708
<i>N. tenuis</i>	487.13	29.12	0.2125	0.3130
<i>T. cucurbitaceus</i>	543.90	34.57	0.1822	0.3152
Parasitoids				
<i>B. nigricans</i> *	29.89	28.16	0.1207	0.1578
<i>D. phthorimaeae</i> *	2.49	22.54	0.0405	0.0410
<i>D. gelechiidivoris</i>	25.95	27.78	0.1172	0.1189
<i>N. tutae</i> *	92.32	23.46	0.1929	0.2409
<i>P. dignus</i>	79.20	29.51	0.1482	0.1546
<i>T. pretiosum</i> —food*	3.64	10.95	0.1180	0.1180
<i>T. pretiosum</i> on <i>Ephestia</i> + food	33.84	16.06	0.2192	0.2355
<i>T. pretiosum</i> F1 on <i>Tuta</i> + food	30.64	18.32	0.1868	0.1998
<i>T. bactrae</i>	46.42	13.59	0.2823	0.3031

Table 3. Life-table parameters related to the pest kill rate of predators and parasitoids of *Tuta absoluta*. K_0 = net consumption rate; T_k = mean predation/parasitization time; k_m = pest kill rate; * = species causing death of host by stinging and/or host feeding.

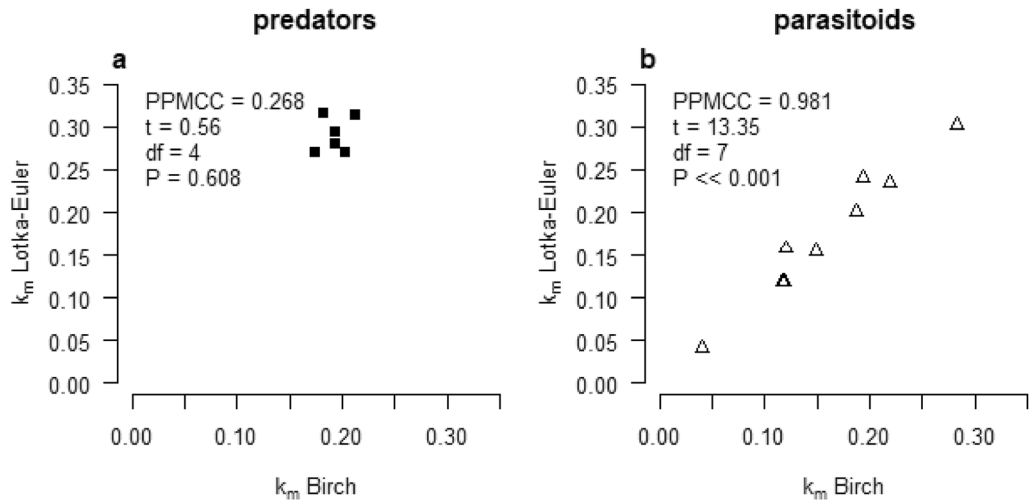


Figure 2. Correlation between values of k_m calculated by the Birch (x-axis) and the Lotka-Euler (y-axis) approach for predators (a) and parasitoids (b).

female offspring produced. This not only holds for *M. pygmaeus* and *T. cucurbitaceus* (high predation, very few offspring), but also for the other predators (high predation but varying numbers of offspring). Parasitoids that do not kill hosts by host feeding or stinging show, as expected, very small differences between r_m and k_m values (Fig. 3c), while parasitoids that do kill hosts by feeding and stinging show larger differences between r_m and k_m values, showing why it is important to calculate the pest kill rate k_m in order to estimate their total pest reduction capacity (Fig. 3d).

The k_m values of the six predators are all higher than the r_m of the pest (Table 3), which indicates that the predators may kill more eggs of *T. absoluta* than the latter can produce. The high kill rate, together with a considerable rate of population increase of the predators *C. infumatus*, *E. varians*, *M. basicornis* and *N. tenuis* is theoretically sufficient to reduce pest populations below the economic threshold density after a single or only a few releases. Two out of the seven species of parasitoids have similar k_m values as the r_m of the pest (Table 3): *P. dignus* and *T. pretiosum* (with provision of honey as additional food). The k_m values of the parasitoids *T. bactrae* and *N. tutae* are higher than the r_m value of the pest. This, together with these parasitoids' high r_m values, suggests that they may be able to reduce pest populations below the economic threshold density after a single release.

In Fig. 4, the survival rates (l_x), the reproduction rates (m_x) and the killing activity (k_x) values over the lifetime of several *T. absoluta* natural enemies are presented. The supplementary material provides these figures for each species of predator and parasitoid. *Macrolophus basicornis* (Fig. 4a) is an example of a predator that lives, reproduces and preys during a long period of time; *M. pygmaeus* (Fig. 4b), is an example of a predator that lives, reproduces and preys during a short period of time. This translates to a very low r_m for *M. pygmaeus*, but the k_m is similar to that of *M. basicornis* because the predation rate is high during the short adult lifespan of *M. pygmaeus*. *Necremnus tutae* (Fig. 4c), is an example of a larval parasitoid that kills hosts through parasitism and by nonreproductive activities like stinging and host feeding. This parasitoid has a long adult life, and high r_m and k_m values. *Trichogrammatoidea bactrae* (Fig. 4d), is an example of an egg parasitoid that only parasitizes eggs, has a short adult life, but exhibits the highest r_m and k_m values of all parasitoids. The life tables in the supplementary material (Tables S1–S14) and the examples in Fig. 4 also show that predators, with the exception of *M. pygmaeus*, live longer (averages from about 50 to more than 90 days) and kill pest eggs over longer periods (averages from 40–80 days) than parasitoids (average lifespans from 11 to about 60 days, average parasitism/host kill periods from 1 to 15 days; with *B. nigricans* as the exception with a 64 days long maximal lifespan and a pest killing period of more than 50 days). Immature development times of predator and parasitoid species range from 10 to 28 days, and the average duration of a generation is longer for predators (from 40 to 60 days) than for parasitoids (from 11 to 37 days).

Differences between Birch and Lotka-Euler approaches

The Birch approximation is easier to apply than the Lotka-Euler iteration, but it results in an underestimate of both the r_m and k_m due to the approximation of T and T_k . The approximation results in higher values for T_k than for T , particularly in predators, because predation is spread over a much longer time (all nymphal stages and the adult stage) than reproduction. This translates to a higher underestimate for k_m than for r_m and to the highest underestimate in absolute terms for k_m in predators. In parasitoids, the difference between the two values for r_m and k_m calculated by both approaches is the smallest for those species that only kill hosts as a result of parasitism. The differences are larger for parasitoid species that do kill hosts by nonreproductive activities because this host killing is additional to killing by parasitism and takes place over a longer period than the parasitization activities. This leads to the choice to use r_m and k_m values calculated by the Lotka-Euler approach, and is discussed in more detail in van Lenteren et al.¹⁶. Another illustration that the Lotka-Euler iteration results in better estimates of the

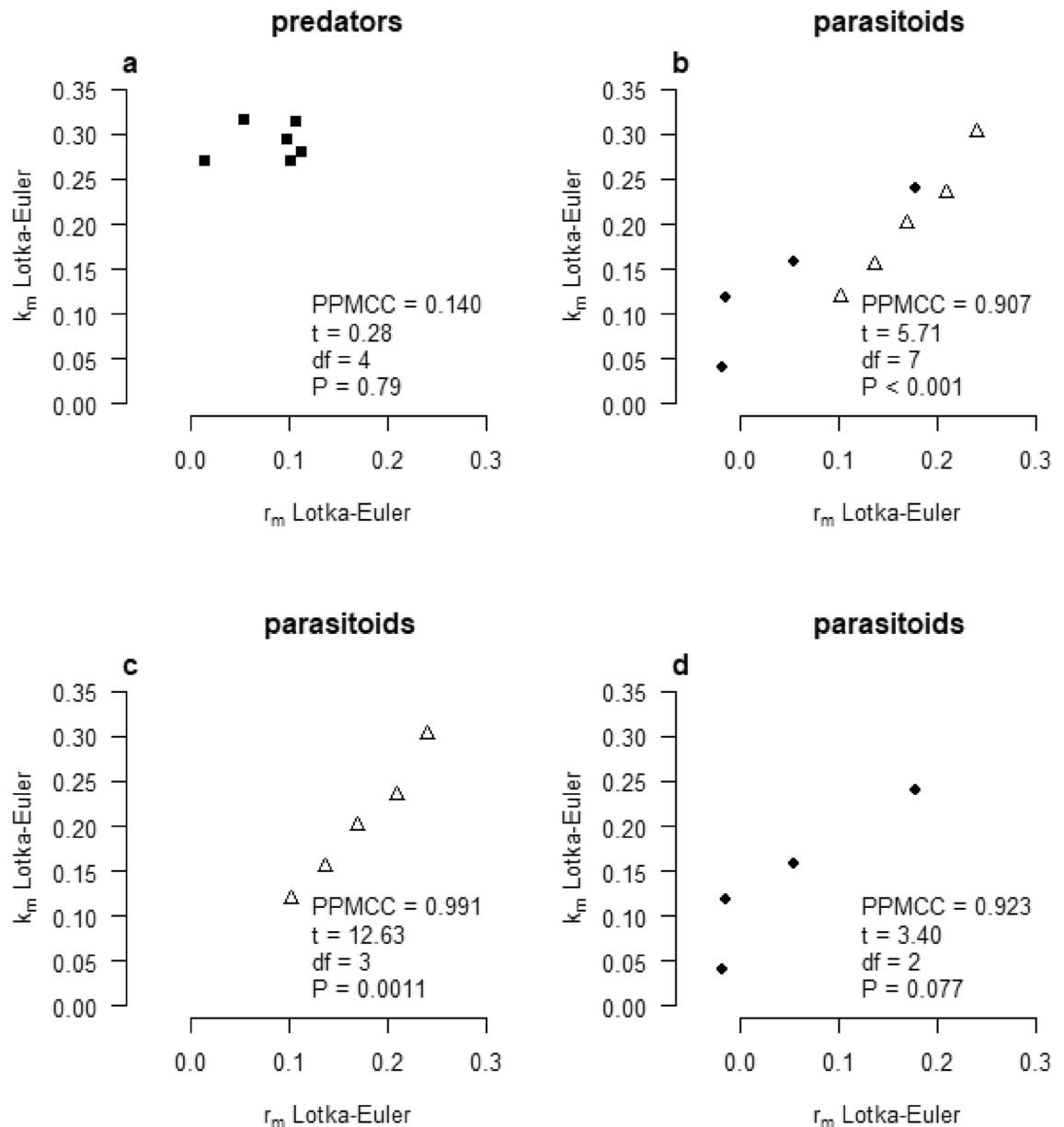


Figure 3. Correlation between r_m and k_m calculated by the Lotka-Euler approach for all predators (a), for all parasitoids (b), for parasitoids without nonreproductive host killing (c), and for parasitoids showing nonreproductive host killing (d).

pest kill rate is the weak correlation between the differently estimated k_m values for predators (Fig. 2a). This is because in the Birch approach the T_k is calculated as an average estimate concentrated at a single point in time, while predation occurs over a long period and during both the nymphal and adult stages.

Discussion and conclusions

The question of what would be the most effective natural enemy of *T. absoluta* is not easy to answer, as tomato production conditions and the pest spectra on tomato are widely varying across the world. A multitude of factors, including multitrophic and intraguild interactions, availability of alternative prey/hosts/sugar sources, host plant resistance, irrigation, fertilization, neighbouring crops^{7,22,23} will influence the control effect of a natural enemy. However, if only the pest kill rate is considered, the predators *N. tenuis* and *T. cucurbitaceus* would rank as potentially most effective, but all predators have a k_m higher than the r_m of the pest. Successful control of *T. absoluta* has been confirmed in the case of *N. tenuis*^{15,24}. In addition, *C. infumatus* and *M. basicornis* successfully established on *T. absoluta* infested tomato plants and significantly reduced pest numbers²⁵. The low r_m of *T. cucurbitaceus* and the very low r_m of *M. pygmaeus* indicate that these predators may only be used in inundative release programmes or play a role in natural and conservation biological control. *Trichogrammatoidea bactrae* would rank as the potentially most effective parasitoid, with *N. tutae*, *P. dignus*, and *T. pretiosum* showing kill rates similar to or higher than the population growth rate of the pest. The control capacity of *N. tutae* is confirmed

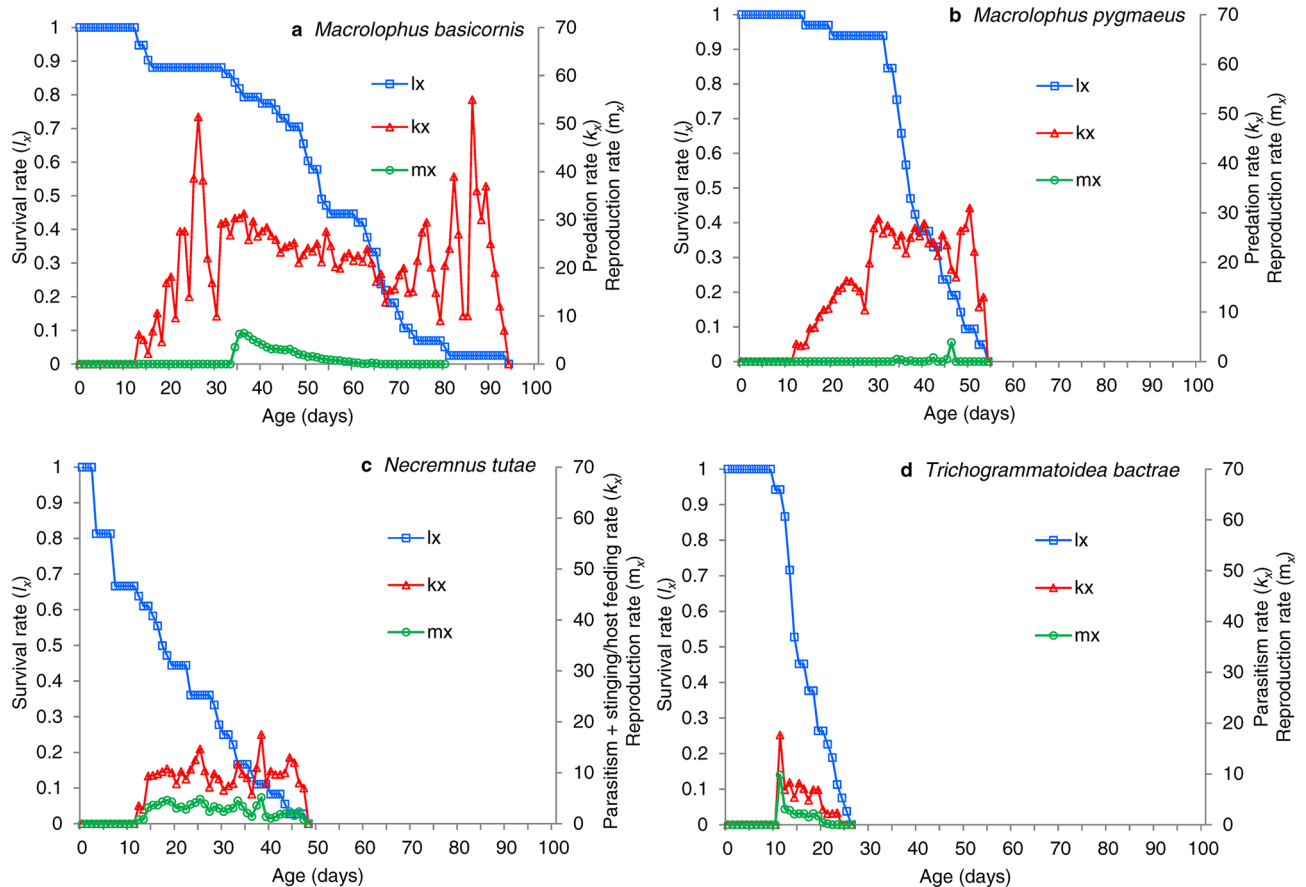


Figure 4. Examples of survival rate (l_x), the reproduction rate (m_x) and predation/parasitism rate (k_x) values over the lifetime of selected species of predators and parasitoids of *Tuta absoluta*.

by results published by Calvo et al.²⁶ who observed that *N. tutae* significantly reduced *T. absoluta* populations, although relatively high release rates were needed. Interestingly, *N. tutae* often spontaneously invade greenhouses and successfully controlled *T. absoluta* in Spain²⁷. The other parasitoids discussed in this paper could play a role in inundative release programmes or in natural and conservation biological control. The least effective natural enemy would be *D. phthorimaeae* with a k_m far below the r_m of the pest. We are now preparing a population dynamics model (to be presented elsewhere) to estimate the effect of the kill rate of the predator together with its population growth rate to be able to draw more precise conclusions about the potential role of the natural enemies in controlling *T. absoluta*. Also, not only the pest kill rate in combination with the population growth rate should be considered when answering the question about the best and worst natural enemy and this is discussed below.

As explained in the introduction, the main aim of using the pest kill rate parameter is to rank natural enemies after they have first been evaluated by the list of criteria given in van Lenteren et al.¹⁶. When these criteria are applied to the species discussed in this paper for use in seasonal inoculative (one or few releases when pest is observed or not yet present) or inundative (frequent releases of large numbers) programmes in a tomato crop with only *T. absoluta* as pest, *B. nigricans*, *D. phthorimaeae*, *D. gelechiidivoris* and *T. pretiosum* without provision of additional food would not be considered candidates for its control. Their population development is too slow and their capacity to parasitize and kill hosts too limited. The following species would be considered problematic as well: *M. pygmaeus* because it hardly reproduces on *T. absoluta*¹³ and *N. tenuis* because of its severe plant damaging effect due to phytophagy if its population density becomes too high¹². The following candidates offer potential: the predators *C. infumatus*, *E. varians*, *M. basicornis* and *T. cucurbitaceus*, and the parasitoids *P. dignus*, *N. tutae*, *T. pretiosum* and *T. bactrae*. However, all parasitoids, with the exception of *T. pretiosum* without food, have been tested with provision of honey. It is not yet known how they would perform in a tomato crop with only *T. absoluta* as pest, where they have no access to nectar or honeydew. On the other hand, it is rather unrealistic to consider a situation with only *T. absoluta* as pest. In greenhouses in temperate climates occurrence of other pests such as whiteflies, aphids, lepidopterans and dipteran leafminers, thrips and spider mites is common^{28–30}. As a result, honeydew is usually present, as well as alternative prey for the predators (e.g. see Fig. 2 in Biondi et al.⁷). In (sub)tropical greenhouses and in open field tomato production an even larger pest spectrum occurs^{22,23,31}. If alternative prey is available, *M. pygmaeus* might still play a role as they kill large numbers of *T. absoluta* eggs and can reproduce on other prey. When honeydew is available the parasitoids *T. pretiosum* and *T. bactrae* might also be considered as candidates. This, then, results in all six species of predators (provided that *N. tenuis* populations are properly managed) and four species of parasitoids (*N. tutae*, *P. dignus*, *T. pretiosum* and *T. bactrae*) as

candidates for seasonal inoculative or inundative release for control of the pest. Some of these species, when environmental risk assessments do not show serious nontarget effects, can be used also in classical biological control. The parasitoids that develop too slowly and/or kill too few hosts (*B. nigricans*, *D. phthorimaeae* and *D. gelechiidivoris*) might play a supportive role in conservation and classical biological control.

Part of the selection process for a natural enemy to be useful in commercial releases is its ease of mass rearing, and whether the natural enemy is able to control other pests. Concerning the first issue, ease of mass rearing, economic mass-production methods have been developed earlier by commercial companies for mirid predators. The same holds for the parasitoids *T. pretiosum* and *T. bactrae*, but *N. tutae* is very difficult to mass rear³². The second issue, being able to control other pests, depends on the complexity of the pest situation in greenhouses. The pest spectrum in temperate greenhouses is much narrower than in the (sub)tropics, so both generalist predators or the more specific parasitoids could be used. In the (sub)tropics generalist mirid predators might be of greater value, as they not only kill a wide range of lepidopterans, but also whiteflies, aphids and even spider mites (V.H.P. Bueno, F.C. Montes and D. B. Silva, personal communication 2021,³³). Bueno (personal communication 2020, and supplementary material (Table S17)) concluded that more than 15 different species of natural enemies would be needed for the control of more than 15 species of pests that occur on tomato in Brazil. With an effective Neotropical mirid predator, the number of species of natural enemies needed in tomato in Brazil might be reduced to less than five. A. Urbaneja (personal communication 2021) confirms that the same reasoning holds for the Palearctic mirid *N. tenuis* with regard to control of a similar range of pests on tomato in the Mediterranean Basin.

An interesting characteristic of mirid predators besides their broad prey menu is that they are champions in dealing with the poisonous sticky hairs on tomato^{34,35}. Yet another attractive characteristic is their capacity to induce defensive plant responses due to their phytophagous behaviour³⁶. These defenses can activate the production of secondary metabolites and proteins that have toxic, repellent, and/or antifeedant effects on herbivores (direct defenses). Furthermore, the production and release of Herbivore-Induced Plant Volatiles can modify the behaviour of both phytophagous pests and their natural enemies (indirect defenses). Mirid-induced defenses may reduce the impact of pest herbivores on tomato plants, e.g. those induced by the *N. tenuis* might partly explain the success achieved by this predator in southeastern Mediterranean tomatoes³⁶.

Eventually, only well-replicated experiments and/or well-documented experience under practical tomato growing situations will provide an answer to the suitability of these natural enemies for control of *T. absoluta*.

Concluding remarks

1. As pest kill rate (k_m) values are always higher than intrinsic rate of natural increase (r_m) values, they provide better insight for estimating the potential of a natural enemy to control the pest. With the pest kill rates calculated in this paper, several species of natural enemies can be removed from the list of potential candidates for biological control of *T. absoluta* in seasonal inoculative or inundative release programmes. The few natural enemies that have shown to be able to control *T. absoluta* on tomato, in particular the predator *N. tenuis* and the parasitoid *N. tutae*, have k_m values that are considerably larger than the r_m of the pest.
2. To evaluate the potential of natural enemies in controlling the pest during several generations, a model linking the intrinsic rate of natural increase and the pest kill rate needs to be developed. With this model, it would be possible to estimate whether a seasonal inoculative or an inundative biological control programme is required.
3. Authors stating that a certain organism might be a promising candidate for biological control should support such statements with a critical evaluation of natural enemy characteristics, provision of quantitative data such as the pest kill rate as presented in this paper, and with results of experiments performed under realistic crop production conditions to confirm laboratory findings. When using evaluation criteria and the pest kill rate parameter, it is, for example, possible to eliminate more than 180 of the 200 species that are currently listed as candidates for control of *T. absoluta*. Over the years, many authors speculated about the contribution to biological control by the organism they studied without presenting data that make it possible to substantiate and confirm their supposition. Other authors mentioning r_m —and in a few cases k_m —values did not present the raw data as supplementary material or in a data repository, were not willing to provide the data upon request or, in some cases, the provided data indicated that the paper contained mistakes and that these raw data proved unsuitable to calculate the pest kill rate because they were incomplete. However, most requests for sending us detailed life-table data resulted in provision of these raw data. Thus, we petition for compulsory provision of raw data with the submission of a manuscript.

Material and methods

Predators of *Tuta absoluta*. In South America, more than 50 species of predators have been found in association with *T. absoluta* but less than 10 species might be sufficiently effective for its control^{8,24,25}. Currently, the mirid *Tupiocoris cucurbitaceus* (Spinola) (Hemiptera: Miridae) is used for control of *T. absoluta* in Chile³⁷ and for control of whitefly in Argentina and Uruguay (Carlos Silvestre, Brometan Biological System—Biobest Argentina, personal communication). Complete sets of life-table data are rare for predators, because the nymphal and adult stages consume many *T. absoluta* eggs per day (up to on average 70 eggs) and in their total lifetime (up to on average 1265 eggs). Comprehensive life tables have been published for three Neotropical mirids (*Campyloneuropsis infumatus* (Carvalho), *Engyttatus varians* (Distant) and *Macrolphus basicornis* (Stål) (Hemiptera: Miridae))¹⁶, and sufficient predation data are available for the mirid *T. cucurbitaceus* to be able to reconstruct a life table³⁸. Ten arthropod species, mainly hemipterans are known to prey on *T. absoluta* in Europe⁸. For two of

these European mirid predators, *M. pygmaeus* and *N. tenuis*, detailed life-table data are available for predation by the nymphal stages¹³, and adult predation could be estimated based on partial daily predation data determined by Molla et al.¹³ and data earlier published^{10,39–43}. A recent paper⁴⁴ showed that the predation rates of nymphs and adults of the damsel bug *Nabis pseudoferus* Remane (Hemiptera: Nabidae) are similar to those of mirid predators, but the paper contained insufficient information to be able to calculate the pest kill rate.

Parasitoids of *Tuta absoluta*. More than 50 (morpho) species of egg, larval and pupal parasitoids are associated with *T. absoluta* in South America, but only 23 could be confirmed parasitizing this host⁴⁵. Almost 50 species of parasitoids are supposed to parasitize *T. absoluta* in Europe⁸. Recently, stocktaking of parasitoids in Africa⁴⁶ resulted in finding several new species. Of all these parasitoids, few species have been tested under (semi-)practical conditions: the egg parasitoids *T. achaeae* in France and Spain⁸, *T. pretiosum* in Brazil¹¹, and the larval parasitoid *Necremnus tutae* (= *N. artynes*) Ribes and Bernardo (Hymenoptera: Eulophidae) in Spain²⁶. Only *Trichogramma* and *Trichogrammatoidea* egg parasitoids are mass reared and augmentatively released on a small area in the southwestern Mediterranean basin^{7,8} and in Brazil, Chile, Colombia, Ecuador and Peru in Latin America^{45,47}. Detailed life-table data could be obtained for *T. pretiosum* with¹⁴ and without food (Montes, personal communication 2020, supplementary material Table S11). A third set of complete life-table data exists for *T. pretiosum*^{48,49}, as well as a set for *T. achaeae* (T. Cabello, University of Almeria, personal communication 2018), but the original data sets were not made available. A complete life table was provided for *Trichogrammatoidea bactrae* Nagaraja (Hymenoptera: Trichogrammatidae)⁵⁰, an exotic species initially introduced into Argentina for control of *Pectinophora gossypiella* Saunders (Lepidoptera: Gelechiidae)^{45,50}.

In South America, most studies on larval parasitoids of *T. absoluta* concern *D. phthorimaea*, *Dolichogenidea* (*Apanteles*) *gelechiidivoris* Marsh. (Hymenoptera: Braconidae) and *Pseudapanteles dignus* (Muesebeck) (Hymenoptera: Braconidae)⁴⁵. In Europe, several larval parasitoids have been studied, including *B. nigricans* and *N. tutae*⁸. Recent studies in Africa concentrated on *D. gelechiidivoris*, which was imported from Peru into Kenya⁵¹, and on *B. nigricans* and *Dolichogenidea appellator* (Telenga) (Hymenoptera: Braconidae)⁴⁶. The host kill rate of the *Neochrysocharis formosa* (Westwood) (Hymenoptera: Eulophidae) was recently published⁵², but important basic information to judge the quality of the data was lacking in the paper and contact with the authors did not result in the provision of the raw data used for calculation of the kill rate by us. Complete sets of life-table data could be obtained for the larval parasitoids *B. nigricans*¹⁹, *D. gelechiidivoris*⁵¹, *N. tutae*⁵³, and *P. dignus*⁵⁴. Partial life-table data for *D. phthorimaea*^{55,56} combined with additional information provided by these authors, resulted in sufficient material to determine the pest kill rate for this species.

In total, we obtained life tables for 13 species of natural enemies: six predators and seven parasitoids (Table 1). All cohort-based life-table data for each species together with a reference to the original paper details on material and methods are provided as supplementary material (supplementary material Tables S1–S14). Only life-table data have been used that were determined at temperatures between 24 and 26 °C. Although the experimental conditions differed with regard to humidity, photoperiod, light intensity, ventilation and size of the experimental arenas, we do not expect they strongly influenced the life-table data which is explained in supplementary material Text S15.

Research involving plants. The plants used in the experiments were commercially available cultivars and did not involve plant species at risk of extinction or species of the wild flora. Our research complied with local and national regulations—Formal ethical approval was not required.

Calculation of intrinsic rate of population increase (r_m) and pest kill rate (k_m)

Life-table parameters of predators and parasitoids were studied following the methodology explained by Birch⁵⁷, where x denotes the pivotal age in days after an egg is laid (so, including immature stages for predators), l_x the age-specific survival (including immature mortality), and m_x the age-specific fertility (the number of females produced per female alive at age x). These were determined in order to calculate the derived quantities as defined in Table 4. The pest kill rate (k_m) of the predators and parasitoids was calculated using the same formula as r_m , but the age-specific fertility (m_x) was substituted with the age-specific predation (k_x) both during the nymphal and the adult stages for predators and only the adult stage for parasitoids. The mean predation time T_k can be considered as the time required for a population to predate at a rate of K_0 . The net consumption rate K_0 is the number of prey items killed during a generation of the predator, corrected by natural mortality of the predator. For parasitoids, m_x was substituted by the age-specific parasitism, and, if parasitoids showed nonreproductive host killing due to stinging and/or host feeding, by the age-specific host killing. K_0 for parasitoids is the number of hosts killed by parasitism and nonreproductive host killing, corrected by natural mortality of the parasitoid.

When individual daily predation and parasitism data are available, pest kill rates values can also be calculated with the Euler-Lotka Eq.^{58,59}, which is a more accurate method than the Birch approach¹⁶. In that case r_m can be assessed with Eq. (1) and k_m with Eq. (2). The values for r_m and k_m are obtained by iteration, i.e. by updating r_m and k_m values until the formula gives the required value of 1.

$$1 = \sum_{x=0}^{x_{max}} l_x m_x \exp(-r_m x) \quad (1)$$

$$1 = \sum_{x=0}^{x_{max}} l_x k_x \exp(-k_m x) \quad (2)$$

Notation	Description
x	Pivotal age in days after an egg is laid
l_x	Daily survival at age x (including immature mortality)
m_x	Daily fertility (the number of females produced per female alive at age x)
$R_0 = \sum_{x=0}^{x_{max}} l_x m_x$	Net reproductive ratio
$T = \frac{\sum_{x=0}^{x_{max}} l_x m_x x}{R_0}$	Mean generation time
$r_m = \frac{\ln(R_0)}{T}$	Intrinsic rate of population increase
$\lambda = \exp(r_m)$	Finite rate of increase
k_x	Daily predation/parasitism/nonreproductive host killing at age x
$K_0 = \sum_{x=0}^{x_{max}} l_x k_x$	Net consumption rate
$T_k = \frac{\sum_{x=0}^{x_{max}} l_x k_x x}{K_0}$	Mean predation/parasitism/nonreproductive host killing time
$k_m = \frac{\ln(K_0)}{T_k}$	Pest kill rate (discretized assessment)

Table 4. Description and formulas for the data-based quantities.

For all predators and parasitoids, the intrinsic rate of natural increase and the pest kill rate was calculated with both the Birch and Euler-Lotka approach as explained in van Lenteren et al.¹⁶. The r_m and k_m calculations are provided as supplementary material (supplementary material Tables S1–S14).

Statistics

The Pearson's product-moment correlation⁶⁰ was used to calculate the correlations coefficients (PPMCC) between r_m values, k_m values and the $r_m - k_m$ values.

Received: 1 March 2021; Accepted: 4 May 2021

Published online: 24 May 2021

References

- Malthus, T. *An Essay on the Principle of Population* (J. Johnson Publisher, London, 1798).
- Nicholson, A. J. The balance of animal populations. *J. Anim. Ecol.* **2**(1), 132–588 (1933).
- Andrewartha, H. G. & Birch, L. C. *The distribution and abundance of animals* (University of Chicago Press, 1954).
- Turchin, P. *Complex Population Dynamics: A Theoretical/Empirical Synthesis. Monographs in Population Biology* Vol. 35 (Princeton University Press, 2003).
- Bellows, T. S. & Hassell, M. P. Theories and mechanisms of natural population regulation. In *Handbook of Biological Control* (eds Bellows, T. S. & Fisher, T. W.) 17–44 (Academic Press, 1999).
- Cock, M. J. W. et al. Do new access and benefit sharing procedures under the convention on biological diversity threaten the future of biological control?. *Biocontrol* **55**, 199–218. <https://doi.org/10.1007/s10526-009-9234-9> (2010).
- Biondi, A., Guedes, R. N. C., Wan, F. H. & Desneux, N. Ecology, worldwide spread, and management of the invasive South American tomato pinworm, *Tuta absoluta*: past, present, and future. *Annu. Rev. Entomol.* **63**, 239–258. <https://doi.org/10.1146/annurev-ento-031616-034933> (2018).
- Ferracini, C. et al. Natural enemies of *Tuta absoluta* in the Mediterranean basin, Europe and South America. *Biocontrol Sci. Technol.* **29**, 578–609. <https://doi.org/10.1080/09583157.2019.1572711> (2019).
- Guedes, N.C., Picanco M. *Tuta absoluta* in South America: pest status, management & insecticide resistance. Proceedings of the EPPO/IOBC/FAO/NEPPO Joint International Symposium on Management of *Tuta absoluta* (tomato borer). Agadir, Morocco, Nov. 16–18, 2011, 15–16 (2011).
- Urbaneja, A., Monton, H. & Mollá, O. Suitability of the tomato borer *Tuta absoluta* as prey for *Macrolophus pygmaeus* and *Nesidiocoris tenuis*. *J. Appl. Entomol.* **133**, 292–296 (2009).
- Parra, J. R. P. & Zucchi, R. A. *Trichogramma* in Brazil: feasibility of use after 20 years of research. *Neotrop. Entomol.* **33**, 271–281 (2004).
- Pérez-Hedo, M. & Urbaneja, A. The zoophytophagous predator *Nesidiocoris tenuis*: a successful but controversial biocontrol agent in tomato crops. In *Advances in Insect Control and Resistance Management* (eds Horowitz, A. R. & Ishaaya, I.) 121–138 (Springer, Dordrecht, 2016).
- Mollá, O., Biondi, A., Alonso-Valiente, M. & Urbaneja, A. A comparative life history study of two mirid bugs preying on *Tuta absoluta* and *Ephesia kuehniella* eggs on tomato crops: implications for biological control. *Biocontrol* **59**, 175–183. <https://doi.org/10.1007/s10526-013-9553-8> (2014).
- Bajonero, J.G. *Tuta absoluta* (Meyrick, 1917) (Lepidoptera: Gelechiidae): adequação de uma dieta artificial e avaliação do seu controle biológico com *Trichogramma pretiosum* Riley em tomateiro. PhD Thesis, Universidade de São Paulo Escola Superior de Agricultura “Luiz de Queiroz”, Piracicaba, Sao Paolo, Brazil, p. 87 (2016).
- Calvo, F. J., Lorente, M. J., Stansly, P. A. & Belda, J. E. Pre-plant release of *Nesidiocoris tenuis* and supplementary tactics for control of *Tuta absoluta* and *Bemisia tabaci* in greenhouse tomato. *Entomol. Exp. Appl.* **143**, 111–119 (2012).
- van Lenteren, J. C. et al. Pest kill rate as aggregate evaluation criterion to rank biological control agents: a case study with Neotropical predators of *Tuta absoluta* on tomato. *Bull. Entomol. Res.* **109**, 812–820. <https://doi.org/10.1017/S0007485319000130> (2019).
- Tommasini, M. G., van Lenteren, J. C. & Burgio, G. Biological traits and predation capacity of four *Orius* species on two prey species. *Bull. Insectol.* **57**, 79–94 (2004).
- van Lenteren, J. C. *Ecology: Cool Science, But Does It Help?* 44 (Wageningen University, Wageningen, 2010).

19. Biondi, A., Desneux, N., Amiens-Desneux, E., Siscaro, G. & Zappalà, L. Biology and developmental strategies of the Palaearctic parasitoid *Bracon nigricans* (Hymenoptera: Braconidae) on the Neotropical moth *Tuta absoluta* (Lepidoptera: Gelechiidae). *J. Econ. Entomol.* **106**, 1638–1647 (2013).
20. Bin, F., Vinson, S. B. Efficacy assessment in egg parasitoids (Hymenoptera): proposal for a unified terminology. In *Trichogramma and other egg Parasitoids* (eds. Wajnberg E. & Vinson S.B.). *Proceedings 3rd International Symposium, San Antonio, Texas*, pp. 175–179 (1990).
21. Abram, P. K., Brodeur, J., Urbaneja, A. & Tena, A. Nonreproductive effects of insect parasitoids on their hosts. *Annu. Rev. Entomol.* **64**, 259–276. <https://doi.org/10.1146/annurev-ento-011118-111753> (2019).
22. Chailleux, A., Droui, A., Bearez, P. & Desneux, N. Survival of a specialist natural enemy experiencing resource competition with an omnivorous predator when sharing the invasive prey *Tuta absoluta*. *Ecol. Evol.* **7**, 8329–8337 (2017).
23. Han, P. *et al.* Bottom-up effects of irrigation, fertilization and plant resistance on *Tuta absoluta*: implications for Integrated Pest Management. *J. Pest Sci.* **92**, 1359–1370. <https://doi.org/10.1007/s10340-018-1066-x> (2019).
24. Calvo, F. J., Bolckmans, K. & Belda, J. E. Release rate for a pre-plant application of *Nesidiocoris tenuis* for *Bemisia tabaci* control in tomato. *Biocontrol* **57**, 809–817 (2012).
25. van Lenteren, J. C., Bueno, V. H. P., Calvo, F. J., Calixto, A. M. & Montes, F. C. Comparative effectiveness and injury to tomato plants of three Neotropical mirid predators of *Tuta absoluta* (Lepidoptera: Gelechiidae). *J. Econ. Entomol.* **111**, 1080–1086. <https://doi.org/10.1093/jee/toy057> (2018).
26. Calvo, F. J., Soriano, J. D., Stansly, P. A. & Belda, J. E. Can the parasitoid *Necremnus tutae* (Hymenoptera: Eulophidae) improve existing biological control of the tomato leafminer *Tuta absoluta* (Lepidoptera: Gelechiidae). *Bull. Entomol. Res.* **406**, 502–511. <https://doi.org/10.1017/S0007485316000183> (2016).
27. Crisol-Marinez, E. & van der Blom, J. *Necremnus tutae* (Hymenoptera, Eulophidae) is widespread and efficiently controls *Tuta absoluta* in tomato greenhouses in SE Spain. *IOBC/WPRS Bull.* **147**, 22–29 (2019).
28. Castañé, C., van der Blom, J. & Nicot, P. C. Tomatoes. In *Integrated Pest And Disease Management In Greenhouse Crops* (eds Gullino, M. L. *et al.*) 487–511 (Springer, Switzerland, 2020). https://doi.org/10.1007/978-3-030-22304-5_17.
29. Knapp, M., Palevsky, E. & Rapisarda, C. Insect and mite pests. In *Integrated Pest and Disease Management in Greenhouse Crops* (eds Gullino, M. L. *et al.*) 101–144 (Springer, Switzerland, 2020). https://doi.org/10.1007/978-3-030-22304-5_17.
30. van Lenteren, J. C., Alomar, O., Ravensberg, W. J. & Urbaneja, A. Biological control agents for control of pests in greenhouses. In *Integrated Pest And Disease Management In Greenhouse Crops* (eds Gullino, M. L. *et al.*) 409–440 (Springer, Switzerland, 2020).
31. Pratisoli, D. & de Carvalho, J.D. Guia de Campo: Pragas da Cultura do Tomateiro. Alegre, ES: NUDEMAFI, Centro de Ciências Agrárias, UFES, 35pp. (Série Técnica/NUDEMAFI, ISSN 2359-4179; 1) (2015).
32. Bodino, N., Ferracini, C. & Tavella, L. Functional response and age-specific foraging behaviour of *Necremnus tutae* and *N. cosmopterix*, native natural enemies of the invasive pest *Tuta absoluta* in Mediterranean area. *J. Pest Sci.* **92**, 1467–1478. <https://doi.org/10.1007/s10340-018-1025-6> (2019).
33. Pérez-Hedo, M., Riahi, C. & Urbaneja, A. Use of zoophytophagous mirid bugs in horticultural crops: current challenges and future perspectives. *Pest Manag. Sci.* **77**, 33–42 (2021).
34. Wheeler, A. G. Jr. & Krimmel, B. A. Mirid (Hemiptera: Heteroptera) specialists of sticky plants: adaptations, interactions and ecological implications. *Annu. Rev. Entomol.* **60**, 393–414 (2015).
35. Bueno, V. H. P., Lins, J. C., Silva, D. B. & van Lenteren, J. C. Is predation of *Tuta absoluta* by three Neotropical mirid predators affected by tomato lines with different densities in glandular trichomes?. *Arthropod-Plant Int.* **13**, 41–48. <https://doi.org/10.1007/s11829-018-9658-1> (2019).
36. Pérez-Hedo, M., Arias-Sanguino, A. M. & Urbaneja, A. Induced tomato plant resistance against *Tetranychus urticae* triggered by the phytophagy of *Nesidiocoris tenuis*. *Front. Plant Sci.* **9**, 1419. <https://doi.org/10.3389/fpls.2018.01419> (2018).
37. Barra-Bucarei, L., Devotto Moreno, L. & Iglecias, A. F. Biological control in Chile. In *Biological Control in Latin America and the Caribbean: Its Rich History and Bright Future* (eds van Lenteren, J. C. *et al.*) 108–123 (CAB International, Wallingford, 2020).
38. López, S. N., OrozcoMuñoz, A., Andorno, A. V., Cuello, E. M. & Cagnotti, C. L. Predatory capacity of *Tupiocoris cucurbitaceus* (Hemiptera Miridae) on several pests of tomato. *Bull. Insectol.* **72**, 201–205 (2019).
39. Fauvel, G., Malausa, J. C. & Kaspar, B. Etude en laboratoire des principales caractéristiques biologiques de *Macrolophus caliginosus* (Hemiptera: Miridae). *Entomophaga* **32**, 529–543 (1987).
40. Mollá, O., Montón, H., Vanaclocha, P., Beitia, F. & Urbaneja, A. Predation by the mirids *Nesidiocoris tenuis* and *Macrolophus pygmaeus* on the tomato borer *Tuta absoluta*. *IOBC/WPRS Bull.* **49**, 203–208 (2009).
41. Sánchez, J. A., Lacasa, A., Arnó, J., Castañé, C. & Alomar, O. Life history parameters for *Nesidiocoris tenuis* (Reuter) (Het., Miridae) under different temperature regimes. *J. Appl. Entomol.* **133**, 125–132. <https://doi.org/10.1111/j.1439-0418.2008.01342.x> (2009).
42. Sánchez, J. A., La-Spina, M. & Lacasa, A. Numerical response of *Nesidiocoris tenuis* (Hemiptera: Miridae) preying on *Tuta absoluta* (Lepidoptera: Gelechiidae) in tomato crops. *Eur. J. Entomol.* **11**, 387–395 (2014).
43. Arnó, J. *et al.* *Tuta absoluta*, a new pest in IPM tomatoes in the northeast of Spain. *IOBC/WPRS Bull.* **49**, 203–208 (2009).
44. Mahdavi, T. S., Madadi, H. & Biondi, A. Predation and reproduction of the generalist predator *Nabis pseudoferus* preying on *Tuta absoluta*. *Entomol. Exp. Appl.* **168**, 732–741. <https://doi.org/10.1111/eea.12975> (2020).
45. Salas Gervasio, N. G., Aquino, D., Vallina, C., Biondi, A. & Luna, M. G. A re-examination of *Tuta absoluta* parasitoids in South America for optimized biological control. *J. Pest Sci.* **92**, 1343–1357. <https://doi.org/10.1007/s10340-018-01078-1> (2019).
46. Idriss, G. E. A., Mohamed, S. A., Khamis, F., Du Plessis, H. & Ekesi, S. Biology and performance of two indigenous larval parasitoids on *Tuta absoluta* (Lepidoptera: Gelechiidae) in Sudan. *Biocontrol Sci. Technol.* **28**, 614–628. <https://doi.org/10.1080/09583157.2018.1477117> (2018).
47. Cagnotti, C. L., Riquelme Virgala, M., Botto, E. N. & López, S. N. Dispersion and persistence of *Trichogrammatoidea bactrae* (Nagaraja) over *Tuta absoluta* (Meyrick), in tomato greenhouses. *Neotrop. Entomol.* **47**, 553–559. <https://doi.org/10.1007/s13744-017-0573-4> (2018).
48. Pratisoli, D. Bioecología de *Trichogramma pretiosum* Riley, 1879, nas traças, *Scrobipalpuloides absoluta* (Meyrick, 1917) e *Phthorimaea operculella* (Zeller, 1873), em tomateiro. Piracicaba: Doutorado - Escola Superior de Agricultura "Luiz de Queiroz"/USP, p. 153 (1995).
49. Pratisoli, D. & Parra, J. R. P. Fertility life table of *Trichogramma pretiosum* (Hym., Trichogrammatidae) in eggs of *Tuta absoluta* and *Phthorimaea operculella* (Lep., Gelechiidae) at different temperatures. *J. Appl. Entomol.* **124**, 339–342 (2000).
50. Riquelme Virgala, M. B. & Botto, E. N. Estudios biológicos de *Trichogrammatoidea bactrae* Nagaraja (Hymenoptera: Trichogrammatidae), parasitoid de huevos de *Tuta absoluta* Meyrick (Lepidoptera: Gelechiidae). *Neotrop. Entomol.* **36**, 612–617 (2010).
51. Aigbedion-Atalar, P.O., Abuelgasim Mohamed, S., Hill, M.P., Zalucki, M.P., Azrag, A.G.A., Srinivasan, R. & Ekesi, S. Host stage preference and performance of *Dolichogenideia gelechiivoris* (Hymenoptera: Braconidae), a candidate for classical biological control of *Tuta absoluta* in Africa. *Biol. Control*. Preprint at <https://doi.org/https://doi.org/10.1016/j.biocontrol.2020.104215> (2020).
52. Guleria, P., Sharma, P. L., Verma, S. C. & Chandel, R. S. Life history traits and host-killing rate of *Neochrysocharis formosa* on *Tuta absoluta*. *Biocontrol* **65**, 401–411. <https://doi.org/10.1007/s10526-020-10016-z> (2020).
53. Calvo, F. J., Soriano, J. D., Bolckmans, K. & Belda, J. E. Host instar suitability and life-history parameters under different temperature regimes of *Necremnus artynes* on *Tuta absoluta*. *Biocontrol Sci. Technol.* **23**, 803–815 (2013).

54. Nieves, E. L., Pereyra, P. C., Luna, M. G., Medone, P. & Sánchez, N. E. Laboratory population parameters and field impact of the larval endoparasitoid *Pseudapanteles dignus* (Hymenoptera: Braconidae) on its host *Tuta absoluta* (Lepidoptera: Gelechiidae) in tomato crops in Argentina. *J. Econ. Entomol.* **108**, 1553–1559 (2015).
55. Luna, M. G., Wada, V. & Sánchez, N. E. Biology of *Dineulophus phtorimaeae* (Hymenoptera: Eulophidae), and field interaction with *Pseudapanteles dignus* (Hymenoptera: Braconidae), larval parasitoids of *Tuta absoluta* (Lepidoptera: Gelechiidae) in tomato. *Ann. Entomol. Soc. Am.* **106**, 936–942 (2010).
56. Savino, V., Coviella, C. E. & Luna, M. G. Reproductive biology and functional response of *Dineulophus phtorimaeae* a natural enemy of the tomato moth *Tuta absoluta*. *J. Insect Sci.* **12**, 1–14 (2012).
57. Birch, L. C. The intrinsic rate of natural increase of an insect population. *J. Anim. Ecol.* **17**, 15–26 (1948).
58. Lotka, A. J. Relation between birth rates and death rates. *Science* **26**, 21–22 (1907).
59. Lotka, A. J. & Sharpe, F. R. A problem in age distribution. *Philos. Mag.* **6**(21), 339–345 (1911).
60. Dalgaard, P. *Introductory Statistics With R* 2nd edn. (Springer, New York, 2008).

Acknowledgements

We dedicate this paper to Dr. Robert F. Luck (University of California at Riverside, USA), our good friend and mentor in biological control who passed away on 6 September 2020. Although almost all persons who provided research data are coauthors of this paper, the first author would like to thank all of them for finding and reorganizing their raw data into Excel files and for answering the many questions related to these original data. Dr. Samira Abuelgasim Mohamed (icipe, Nairobi, Kenya) is thanked for her help in obtaining life-table data for the parasitoid *Dolichogenidea gelechiidivoris*.

Author contributions

J.C.v.L. wrote the original draft of the manuscript. All authors reviewed and edited the manuscript. J.C.v.L., A.L. and L.H. prepared Figs. 1–4. J.C.v.L., V.H.P.B., G.B., L.H., P.d.J., and A.L. developed the idea and methodology for the manuscript. A.L. developed the software for calculation of the pest kill rates. All authors were involved in execution of the experiments and data preparation. J.C.v.L., L.H., and A.L. analysed the data and performed the statistical analyses. J.C.v.L. and V.H.P.B. supervised all phases of the pest kill rate research project. All authors have read and agreed to this version of the manuscript, including the order of the authors and the authors are aware that this version was resubmitted.

Funding

This research was funded by research grants of the Brazilian National Council for Scientific Research (CNPQ) (V.H.P.B., F.C.M.), by the International Atomic Energy Agency (IAEA) (S.N.L.), and by the German Academic Exchange Services (DAAD) and the National Research Foundation (NRF) through the South African Research Chairs Initiative (SARChI) of the Department of Science and Technology (DST) and the National Research Foundation (NRF) (P.O.A.A.).

Competing interests

The authors declare no competing interests.

Additional information

Supplementary Information The online version contains supplementary material available at <https://doi.org/10.1038/s41598-021-90034-8>.

Correspondence and requests for materials should be addressed to J.C.v.L.

Reprints and permissions information is available at www.nature.com/reprints.

Publisher's note Springer Nature remains neutral with regard to jurisdictional claims in published maps and institutional affiliations.



Open Access This article is licensed under a Creative Commons Attribution 4.0 International License, which permits use, sharing, adaptation, distribution and reproduction in any medium or format, as long as you give appropriate credit to the original author(s) and the source, provide a link to the Creative Commons licence, and indicate if changes were made. The images or other third party material in this article are included in the article's Creative Commons licence, unless indicated otherwise in a credit line to the material. If material is not included in the article's Creative Commons licence and your intended use is not permitted by statutory regulation or exceeds the permitted use, you will need to obtain permission directly from the copyright holder. To view a copy of this licence, visit <http://creativecommons.org/licenses/by/4.0/>.

© The Author(s) 2021