

ORIGINAL ARTICLE

Use of Chelex-100 for the molecular diagnosis of five animal pathogens

Tomazic ML^{1,2*}, Hamer M¹, Bustos CP³, Arregui M¹, Ascencio M¹, Saraullo V¹, Watanabe O¹, Brihuega B¹, Rodriguez AE¹, Grune Loffler S¹

¹ Instituto de Patobiología Veterinaria (IPVET), Instituto Nacional de Tecnología Agropecuaria (INTA) - Consejo Nacional de Investigaciones Científicas y Técnicas (CONICET), Buenos Aires, Argentina.

² Universidad de Buenos Aires (UBA), Facultad de Farmacia y Bioquímica (FFyB), Cátedra de Biotecnología, Ciudad Autónoma de Buenos Aires, Argentina.

³ UBA, Facultad de Ciencias Veterinarias (FCV), Cátedra de Enfermedades Infecciosas, Ciudad Autónoma de Buenos Aires, Argentina.

* Correspondence: Mariela Tomazic. IPVET, Nicolás Repetto y De los Reseros s/n (1686), Hurlingham, Buenos Aires, Argentina. E-mail: tomazic.mariela@inta.gob.ar

Received: 23 October 2020. Accepted: 9 March 2021. Available online: 6 April 2021

Editor: C. Baravalle

SUMMARY. Molecular tools have improved conventional veterinary diagnosis. Acid nucleic extraction is a key step for downstream applications. This work aimed to compare the DNA extraction method Chelex-100 resin (M1) with Whatman® cards (M2), phenol-chloroform (M3), or commercial kits (M4), and to determine the most sensitive and inexpensive one for its diagnosis of animal pathogens that, despite their economic or zoonotic relevance, receive little attention. DNA was isolated from urine, organs, semen, blood and intestinal mucous, from the bacteria *Leptospira interrogans* serovar Pomona Pomona (by M1 and M2), *Brucella melitensis* (by M1, M3 and M4), and *Salmonella* ser. Abortusequi (by M1 and M4), and the parasites *Leishmania* spp. (by M1, M3 and M4), and *Eimeria* spp. (by M1 and M3), respectively. The sensitivity of each method was assayed by Polymerase Chain Reaction (PCR). The M1 showed similar sensitivity for *Salmonella* ser. Abortusequi, *Leishmania* spp., and *Eimeria* spp., being better for *L. interrogans* serovar Pomona Pomona and slightly lower for *B. melitensis*. For the first time, a simple and economic method was successfully employed for extracting DNA from these animal pathogens, especially important in low-resource settings, contributing to the diagnosis of leptospirosis, brucellosis, leishmaniasis, and coccidiosis; as well as to the molecular epidemiology of salmonellosis in stallion from semen samples.

RESUMEN. *Uso de Chelex-100 para el diagnóstico molecular de cinco patógenos de animales.* Las técnicas moleculares han contribuido a mejorar el diagnóstico veterinario tradicional y la extracción de ácidos nucleicos es determinante. El objetivo de este trabajo fue comparar el método de extracción de ADN Chelex-100 (M1) con papel Whatman (M2), fenol-cloroformo (M3) o kits comerciales (M4), y determinar un método sensible y de bajo costo para el diagnóstico de patógenos de animales económica o zoonóticamente relevantes y que reciben poca atención. A partir de orina, órganos, semen, sangre y mucosa intestinal se extrajo el ADN de las bacterias *Leptospira interrogans* serovar Pomona Pomona (con M1 y M2), *Brucella melitensis* (con M1, M3 y M4), *Salmonella* ser. Abortusequi (M1 y M4), y de los parásitos *Leishmania* spp. (M1, M3 y M4) y *Eimeria* spp. (M1 y M3), respectivamente. La sensibilidad de los protocolos fue analizada por PCR. El método M1 demostró una sensibilidad similar para *S. Abortusequi*, *Leishmania* spp. y *Eimeria* spp., siendo mejor para *L. interrogans* y levemente menor para *B. melitensis*. Por primera vez se usó exitosamente en estos patógenos veterinarios un método simple y económico para extraer ADN, especialmente importante en laboratorios de bajos recursos económicos, contribuyendo al diagnóstico de leptospirosis, brucelosis, leishmaniasis y coccidiosis, así como también a la epidemiología molecular de salmonelosis en muestras de semen de caballos.

Keywords: veterinary diagnosis, DNA, Chelex-100, PCR

Palabras clave: diagnóstico veterinario, ADN, Chelex-100, PCR

Introduction

Animals are affected by many pathogens, causing economic losses due to direct costs for decreased performance and production and additional costs for veterinary assistance and extra care of ill animals. Importantly, some of them are zoonotic and yet receive

little attention. This is the case for bovine leptospirosis, a widespread and potentially fatal zoonosis disease. It is caused by bacteria of the genus *Leptospira* spp. and produces abortions, the birth of weak calves, infertility, mastitis, and agalactia. Moreover, chronically infected animals with no symptoms act as reservoirs spreading pathogenic leptospires through urine, contaminating

water sources, and soil (Levett 2001).

Caprine brucellosis is an endemic zoonotic disease with a wide distribution around the world. In Argentina, the presence of the disease is strongly distributed in areas of high goat production, such as in goat breeding regions for subsistence self-consumption, negatively affecting public health (Rossetti 2017).

Leishmaniasis is another group of zoonotic diseases caused by flagellated hemoparasites of the genus *Leishmania* spp., which are transmitted through the bite of female phlebotomine sandflies to humans and other mammals. The disease is endemic in 98 countries and affects 12 million people around the world. According to the World Health Organization, there are 350 million people at risk, and 2 million new cases are reported each year (World Health Organization 2010). Domestic dogs are very susceptible to this parasite and play an important role in the transmission to humans since they act as reservoirs of infection in both rural and urban areas (Dantas-Torres 2007).

Among diseases of economic importance, it can be mentioned the equine paratyphoid and avian coccidiosis. The former is an infectious disease caused by *Salmonella enterica* subsp. *enterica* ser Abortusequi (*S. Abortusequi*), that manifests mainly as abortion in the mare, orchitis in stallions, and septicemia and polyarthritis in foals. It is a re-emerging disease, affecting negatively the equine production in Argentina (Bustos et al. 2020).

Avian coccidiosis is caused by a protozoan parasite of the genus *Eimeria* spp. and is a highly contagious intestinal parasitosis that involves important losses in the production of avian meat. The economic burden is estimated at more than USD 3 billion in the USA and in Europe more than 2 billion pounds (£) per year (Dalloul and Lillehoj 2006; Pastor-Fernández et al. 2018). Seven species of *Eimeria* affect chickens, each demonstrating a high degree of site-specificity in the chicken gut and different pathogenicity.

These five pathogens of veterinary significance are diagnosed conventionally, which is mainly based on their isolation in culture (*Leptospira* spp. and *Brucella melitensis*) (Godfroid et al. 2011) or direct observation under microscopy (*Eimeria* spp.) and through serological diagnosis (*Leptospira* spp., *Leishmania* spp.). Conventional techniques include the Microscopic Agglutination Test (MAT), bacteriological isolation from urine during leptospirosis acute infection or from tissues during brucellosis infection, and the direct observation of *Eimeria* sp. oocysts in fecal samples, and from the serial scraping method of the intestinal mucosa.

Although these conventional methods have contributed significantly to the control of different diseases, they have some disadvantages such as low sensitivity, being laborious or time-consuming, presenting the risk of

bacteriological contamination or the difficulties in the identification of the isolated species. The ability to achieve isolations and characterization of *B. melitensis* is restricted to laboratories with a high degree of biosafety facilities, given the risk of working with highly pathogenic agents (Jacques et al. 2010). Furthermore, in the case of *Eimeria* spp. identification of species by conventional methods such as oocyst morphology and pre-patent period can be difficult, even for an expert (Kumar et al. 2013).

Molecular diagnosis in the last decades has provided enormous advances. In this sense, downstream application such as PCR, and its variants, i.e. multiplex-PCR, nested-PCR, LAMP, and qPCR among others usually are highly sensitive and specific, allowing the detection of low amounts of microorganisms, and also help in typing or phylogenetic studies. Some of them are ongoing works for some pathogens. This is the case for LAMP for the detection of *Leptospira* spp., multiplex-PCR for *Eimeria* spp. (unpublished data), and PCR for *Salmonella* spp. from the vagina, placenta, and different organs of equine aborted fetuses as a fast approach for equine paratyphoid diagnosis (Bustos et al. 2020).

Beyond the molecular method, the quality and quantity of nucleic acid extraction from samples are a key step. The success of PCR-based technologies depends on the process of extraction and purification of DNA that eliminates contamination and inhibitors, keeping good quality and integrity of the target sequence to be amplified. Although the first nucleic acid isolation was achieved 150 years ago, there is no general Gold-Standard for downstream applications. Chelex-100 resin has been used since the '90s for diagnostic (Noh et al. 2019; Chen et al. 1991) and other purposes (Gill et al. 1992) given that it is a rapid, easily performed, and non-expensive method from a variety of biological samples such as semen, blood, tissues, and milk among others, with different sensitivities depending on the pathogen (Natarajan et al. 2018).

Since molecular diagnosis for the five pathogens mentioned above would complement conventional diagnosis, allowing typing in some cases, testing the best DNA isolation method is crucial, and would contribute to the improvement in control and prevention strategies. The goal of the present work was to compare the *in house* 5% Chelex-100 chelating resin (M1) with three methods such as Whatman® cards (M2), phenol-chloroform organic solvent (M3), or commercial kits (M4) to determine which one yields effective results for the molecular diagnosis for three bacteria: *Leptospira interrogans* serovar Pomona Pomona, *B. melitensis*, and *S. Abortusequi*, and two parasites of the genus *Eimeria* spp. and *Leishmania* spp. from distinct types of samples, i.e. urine, organs, semen, blood, and intestinal mucosa, respectively.

Materials y methods

Samples for DNA isolation

Animal samples were experimentally infected with the following pathogens: the bacteria *Leptospira interrogans* serovar Pomona Pomona and *S. Abortusequi*, and the parasite *Eimeria* spp. For the former, bovine urine was artificially contaminated with *Leptospira interrogans* serovar Pomona Pomona culture in EMJH medium, as previously reported by Hamer et al. 2019. This had 2×10^8 leptospire per mL according to McFarland Scale. Tenfold serial dilutions of *L. interrogans* serovar Pomona Pomona were prepared from 10^{-1} (2×10^7 leptospire/ mL) to 10^{-10} (2×10^{-2} leptospire/ mL) as follows: firstly, 4.5 mL of fresh urine was contaminated with 0.5 mL culture. Then 100 μ L of each dilution was mixed with 900 μ L of urine and was subjected to DNA isolation.

Semen pool sample from equines was artificially contaminated with different concentrations of the strain *S. Abortusequi* UBA1174/15. Briefly, the bacterium was incubated into soy trypticase agar at 37°C ON, and then, a single colony was resuspended in PBS buffer. Bacteria suspension turbidity was adjusted at 0.5 McFarland Standard (approximately 1.5×10^8 cells/ mL) and the surface viable count (Miles, Misra, and Irwin 1938) was used to determine the number of colony-forming units (CFU/mL) in triplicate. The suspensions were serially diluted 1:10 starting from 1:100 to 1:1,000,000 and 100 μ L of each dilution was added to 900 μ L of an equine semen pool sample (final volume 1,000 μ L). Two hundred μ L of each contaminated sample were subjected to DNA extraction.

Oocysts of *Eimeria tenella* were isolated from the caeca of experimentally infected birds as previously described (Chapman and Shirley 2003). Afterwards, the sporulation of isolated oocysts was carried out in potassium dichromate at 2% (Sigma, USA) for 3 days at 28 °C. They were bleached with sodium hypochlorite and washed 3 times with TE buffer (10 mM Tris/ HCl, Promega, USA), 1 mM EDTA (Promega, USA) in deionized water (pH 8.0) using a bench centrifuge at 500 g for 8 min. Finally, oocysts were pelleted, the supernatant was discarded and resuspended in equal volume of Buffer TE and covered with equal volume of 425- 600 μ m glass beads (Sigma, USA), previously sterilized by autoclaving at 121 °C, 15 min. To break the oocysts, up to 5 of 3 min at a maximum speed were performed with vortex mixer Fbr® (Decolab). The cut-off was determined by calculating the percentage of rupture by counting the entire oocysts under a microscope in the Neubauer chamber and more than 85 % of rupture was achieved. Supernatant from the disrupted oocysts was centrifuged at 14,000 g for 10 min and was subjected to DNA isolation from a total of 24,000 caecal oocysts.

DNA from *Brucella melitensis* and *Leishmania infantum* were isolated from naturally infected animals. *B.*

melitensis was isolated from 32 serologically positive goats. Samples from spleen and lymph nodes were obtained, but lymph nodes were exclusively used (19 of 32 total samples) and were subjected to DNA extraction. For the evaluation of the performance, a proportions test was applied to the different methods.

A blood sample from a *L. infantum* positive canine was collected through venipuncture and stored at -20 °C in tubes with sodium citrate 3.8 % until use. The diagnosis was made using the KalazarDetect™ Canine Rapid Test serological kit (INBIOS, USA). 100 μ L of blood was subjected to DNA isolation.

DNA extraction methods

Four methods were employed depending on the pathogen and the type of sample (Table 1).

Table 1. DNA extraction methods performed for different pathogens.

Pathogens	Chelex-100	Whatman	PhChIA	C-Kit
	M1	M2	M3	M4
<i>S. Abortusequi</i>	Yes	No	No	Yes ¹
<i>B. melitensis</i>	Yes	No	Yes	Yes ²
<i>L. interrogans</i>	Yes	Yes	No	No
<i>Eimeria</i> spp.	Yes	No	Yes	No
<i>Leishmania</i> spp.	Yes	No	Yes	Yes ³

¹ PetNAD Nucleic Acid Co-prep kit; ² QIAamp® DNA Mini Kit (QIAGEN); ³ DNeasy® Blood & Tissue (QIAGEN®).

Method 1 (M1): the Chelex-100 resin (BioRad) was prepared and employed according to manufacturer instructions and adapted to each type of sample (Table 2). Briefly, the different samples were incubated with distinct volumes of resin Chelex-100, as described in Table 2, followed by two incubation temperatures of 56 °C and 100 °C, except for equine semen and canine blood samples. Afterwards, a vortex step for urine and caecal mucosa samples followed the incubation step. Finally, a centrifugation step was performed to recover the supernatant, containing DNA, applying different conditions depending on the type of sample. Method 2 (M2): FTA Elute modified protocol using FTA Whatman Classic Card (GE Healthcare Life Sciences) was performed. A punch of FTA card was taken using 3 mm UniCore and was placed in a 1.5 μ L microcentrifuge tube. 50 μ L of urine sample was transferred and incubated for 5 min and the liquid was discarded. Then, it was dried at 100 °C for 5 min and 500 μ L of DNase free water was added and vortexed for 5 s. After the supernatant was discarded, 30 μ L of water was added. After centrifugation at 9,000 g for 10 s, the samples were heated at 100 °C for 15 min and vortexed for 30 s. Finally, samples were centrifuged for 30 s and the supernatant was preserved at -20 °C until use. Method 3 (M3): The organic solvent phenol: chloroform: isoamyl

Table 2. Modified Chelex Protocol according to the type of sample.

Pathogens	Biological sample	Sample volume (µl)		Incubation time (min)		Vortex (sec)	Centrifugation
		Sample	Chelex	56 °C	100 °C		
<i>S. Abortusequi</i>	Semen	P ¹	200	NA	15	NA	14,000 g 15 min
<i>B. melitensis</i>	Tissue	20-50 ²	500 ³	192	15 ⁴	NA	13,600 g 15 min
<i>L. interrogans</i>	Urine	20	150	20	8	10	9,900 g 2 min
<i>Eimeria</i> spp.	Cecal	200	1,500	20	8	120	10,000 g 2 min
<i>Leishmania</i> spp.	Blood	100	1,000	NA	15	NA	13,600 g 10 min

¹ 200 µl of semen sample was centrifuged at 1,500 g for 5 min and the pellet (P) was kept, ² 500 µL of DNase/ RNase was added to 20 to 50 mg and were homogenized; ³ 20 µl of proteinase K (20 mg/ ml) (Promega, USA) was added; ⁴ After the incubation, 2.5 volumes of 100% ethanol was added, centrifuged at 13,600 g for 15 min and resuspend in 70% ethanol; NA: not applied.

alcohol (PhChIA), 25: 24: 1 (Thermo Fisher Scientific, USA) was used for *E. tenella*, *L. infantum*, and *B. melitensis*. For the latter, 50 mg of tissue was placed in a 1.5 µl microtube with 750 µl of lysis buffer (20 mM Tris-HCl (Promega, USA), 5 mM EDTA pH 8 (Promega, USA), 400 mM NaCl, 1% SDS (Promega, USA), proteinase k 400 µg/ ml (Promega, USA) and incubation was carried out for 8 h at 55 °C (Vejarano et al. 2013). *E. tenella* sporulated oocysts were broken with glass beads as mentioned above and following supernatant recovery from the disruption, it was mixed with 0.33 vol of 10% sodium dodecyl sulphate solution (Promega, USA) and incubated at 37 °C for 2 h in the presence of 100 µg /ml of proteinase K (Promega, USA) as described Blake et al. (2003). Thereafter, each sample was centrifuged at 10,000 g for 1 min.

The lysate solution of sporozoites of *Eimeria* sp. and 100 µl blood of a *L. infantum* positive dog DNA from the three pathogens was extracted using the organic solvent as follows: 1 vol of PhChIA was added to the DNA suspended in each supernatant and vortex for 20 s; then, the sample was centrifuged at 16,000 g for 5 min and the supernatant was removed, 0.5 Vols of 7.5 M of sodium acetate (Biodynamics) and 2.5 Vols. of absolute ethanol (Merck). To allow precipitation of the DNA, an overnight incubation was performed at -80 °C. The following day the sample was centrifuged at 16,000 g for 30 min at 4 °C, washed with 70% of ethanol (Merck), and finally the DNA was resuspended in 200 µL of buffer TE (Blake et al. 2003), but not the *L. infantum* DNA, which was resuspended in 50 µl of H₂O milli-Q[®]. Method 4 (M4): three different commercialized kits were employed depending on the type of sample. From tissues of serologically positive animals for *B. melitensis* the QIAamp DNA Mini Kit (QIAGEN[®]) was used, after homogenizing 20- 50 mg of tissue as described in the previous in M3. From 200 µl of equine semen the PetNAD™ Nucleic Acid, Co-prep kit (GeneReach, USA) was used for the later detection of *S. Abortusequi* by PCR. From blood samples from a *Leishmania infantum* positive dogs, the DNeasy[®] Blood & Tissue (QIAGEN[®]) kit was used. In all cases DNA extraction was performed

according to the manufacturer recommendations without modifications.

DNA solution extracted by the four extraction methods was preserved at -20 °C until use except for *Leishmania* DNA, for which aliquots were thawed and re-frozen at 30, 60, and 90 days.

Dilutions of the DNA were performed for *L. infantum* and *E. tenella*. For the former, ten serial dilutions of the DNA were performed, using a dilution factor of 0.33 (from 1 to 1 x 10⁻⁶). For *E. tenella*, DNA was serially diluted (1: 2), starting with a total of 24,000 or 1,200 oocysts for M3 and M1, respectively. Theoretical oocysts were calculated by dividing the oocysts by the volume of resuspension used, i.e. 200 µl for M3 (1,200 oocysts/ µl) and 350 µl for M1 (34 oocysts/ µl). The initial theoretical number of oocysts per PCR was adjusted starting at 300.

Polymerase Chain Reactions (PCRs)

To detect DNA from *Leptospira interrogans* serovar Pomona Pomona, *S. Abortusequi*, *B. melitensis*, *Leishmania* spp. and *Eimeria* spp. PCRs were performed with specific primers previously reported by Bal et al. (1994); Malorny et al. (2003); Bricker and Halling (1994); Rodgers et al. (1990) and Schwarz et al. (2009), respectively. Conditions and previously described primers are listed in Table S1 of the supplementary data.

The volume of DNA used as template was 3 or 4 µL for a final volume of 50 µl except for *Eimeria* that was ranged between 1.5 and 8 µl of genomic DNA template, depending on the sample. PCR products were resolved by 1, 1.5, or 2 % agarose (Biodynamics) gel with ethidium bromide electrophoresis and visualized under UV light with a transilluminator (Uvi Tec transilluminator BTS-20.M). Band sizes were determined with the following molecular weight ladder of 100bp precision (Productos Bio-Lógicos, Buenos Aires, Argentina), GeneRuler 100bp[®] DNA Ladder (Promega), and GenRuler™ 1 kb (ThermoScientific), as indicated.

Results

For leptospirosis, DNA extraction methods M1 (Chelex-100) and M2 (Whatman cards) were compared for the detection of pathogenic leptospires in contaminated urine. It was observed that M1 had a better performance than M2 since leptospiral DNA was detected up to the sixth dilution (10^{-6}), representing an approximate of 2×10^2 leptospires/ mL (Fig. 1A), whereas the M2 detected up to the dilution 10^{-3} (2×10^3 leptospires / mL) (Fig. 1B).

In the case of *B. melitensis*, M1 (Chelex-100), M3 (PhChIA), and M4 (C-kit) methods were compared for molecular detection of positive samples. The proportions test applied did not distinguish a greater capacity for detection by any particular method. Results showed a greater detection trend using the commercial kit. Of a total of 32 positive tissues, M4 detected the presence of *B. melitensis* in 97% (31/32), whereas the other 2 methods did not exceed 85% (27/32) (Table 3).

Leishmania DNA was extracted by M1 (Chelex-100), M3 (PhChIA), and M4 (C-Kit) (Fig. 2A). To compare the sensitivity of the extraction methods, serial dilutions of the DNA extracted with each of the three methods were used as a template for the PCR, and the maximum dilution was recorded in which a positive amplification was obtained. Our results showed that *Leishmania* DNA was detected up to a dilution of 3×10^{-4} with the three methods. Fig. 2B shows, as an example, the amplification curve with M1. Additionally, the DNA stability for *Leishmania* spp. was evaluated. For this purpose, aliquots of DNA extracted by M1 and M4 were stored at -20°C and were thawed and re-frozen at 30, 60, and 90 days. PCR results showed that both extraction methods preserved DNA similarly, given that at 90 days samples amplified up to a dilution of 3×10^{-3} , i.e. one order of magnitude less than the samples without thawed and re-frozen.

For *S. Abortusequi*, similar analytical sensitivities were determined for Chelex-100 (M1) and a commercial kit (M4). Approximately, 1.415×10^3 CFU/mL and 1.415×10^4 CFU/mL of *S. Abortusequi* were the analytical sensitivity for M1 and M3 methods, respectively (data not shown).

Eimeria genus was detected from caecal oocyst from both methods of DNA isolation PhChA (M3) and Chelex-100 (M1) (Fig. 3A). Afterwards, the analytical sensitivity was assessed for both methodologies by a sensitivity curve. It was performed a serial dilution of the DNA and calculated the theoretical oocysts per PCR (tOP), showing amplification up to 18 tOP for M1 and 9 tOP for M3 (Fig. 3B).

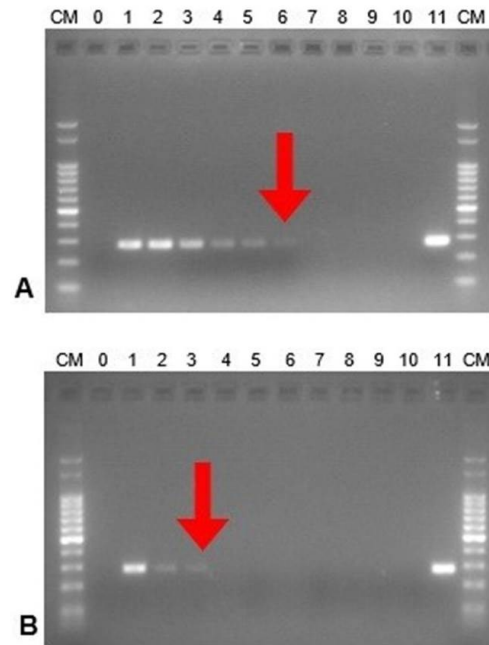


Figure 1. DNA amplification from serial dilutions of pathogenic leptospires (*Leptospira interrogans* serovar Pomona Pomona). *In vitro* assay. DNA ladder (CM):100 bp ladder; 0: negative control. Serial dilutions from 1 to 10. 11: positive control. The best dilution obtained is highlighted with a red arrow. A. Extraction method M1 (Chelex-100), B. Extraction method M2 (Whatman cards).

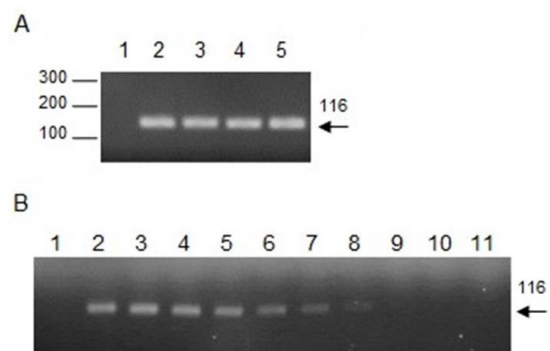


Figure 2. Detection of *Leishmania* spp. and the sensitivity curve. A. Amplification of DNA fragments of the *Leishmania* spp. kinetoplast minicircle by PCR using 13A/13B primers. A 116 bp band is observed using DNA extracted with M1 (2), M3 (3), and M4 (4) from the blood of a positive dog of *Leishmania infantum* (diagnosed by microscopy), and DNA from *Leishmania infantum* culture was used as the positive control (5) or water as the negative control (1). B. Sensitivity curve. Amplification of serial dilutions 1 (2), 1×10^{-2} (3), 3×10^{-2} (4), 1×10^{-3} (5), 3×10^{-3} (6), 1×10^{-4} (7), 3×10^{-4} (8), 1×10^{-5} (9), 3×10^{-5} (10), 1×10^{-6} (11), using DNA extracted with Chelex-100 or water as negative control (1).

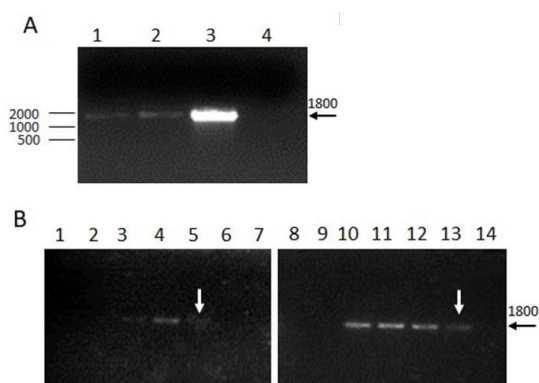


Figure 3. Detection of *Eimeria* spp. and the sensitivity curve. A. Amplification of an 18S rDNA fragment from *Eimeria* spp. A clear 1800 bp band is observed using DNA isolation with both methods, Chelex-100 (M1) or PhCIAI (M3). DNA from live vaccines was used as positive control (3) or water as the negative control (4). B. Analytical sensitivity. Serial dilutions of DNA (1:2) were performed for isolation with M1 (1 to 7) or M3 (8 to 14). Theoretical oocysts per PCR: 300 (1 and 8); 150 (2 and 9); 75 (3 and 10); 37 (4 and 11); 18 (5 and 12); 9 (6 and 13) and negative control (7 and 14).

Discussion

PCR is a downstream application for DNA detection, which is a versatile designed molecular technique that has enabled the development of diagnostic protocols for different etiological agents. Despite acid nucleic extraction has been achieved many years ago, there is no Gold- Standard method to the present time. Chelex-100 is a styrene-divinylbenzene copolymer containing paired iminodiacetate ions, which selectively chelate transition metal ions. When the resin is mixed with the sample before boiling, the DNA damage is prevented besides DNA polymerase inhibitors are attenuated. This leads to DNA with enough integrity to remain as a template for the amplification of target sequences for diagnosis. The use of the resin is attractive because it is a simple, fast, and economic method especially in low-resource settings (Turan et al. 2015; Ascencio et al. 2019).

The present work shows that DNA extraction with Chelex-100 resin was successfully applied in five animal pathogens where it had not been tested before and can be applied for PCR detection although with slightly different sensitivities for each pathogen. Chelex-100 showed better sensitivity than M2 for *L. interrogans* serovar Pomona Pomona and similar sensitivity for *Leishmania* spp. when compared with M3 and M4; for *S. Abortusequi* when compared with M4; and for *Eimeria* spp. when compared with M3. The performance of DNA extraction based on the use of Chelex-100 for detection and diagnosis of *B. melitensis* was slightly surpassed by M3 (PhChIA), which is immediately below the cases detected by M4 (commercial kit). The use of the resin is a valid alternative for the detection of *Brucella* sp. from tissue samples, considering the particularity of being a facultative intracellular bacterium.

Table 3. Results for *B. melitensis* PCR from DNA extracted using different methods. LN: lymph nodes. M1/M3/M4: methods 1, 3 and 4.

Sample	Tissue	M1	M3	M4
1	LN	+	+	+
2	LN	+	+	+
3	LN	+	+	+
4	LN	+	+	+
5	LN	-	-	+
6	LN	+	+	+
7	Pool	+	-	+
8	LN	+	+	+
9	Spleen	+	+	+
10	LN	+	+	+
11	LN	+	+	+
12	LN	+	+	+
13	Spleen	+	+	+
14	Spleen	+	+	+
15	LN	-	-	+
16	LN	+	-	+
17	Spleen	+	-	+
18	Spleen	+	+	+
19	Pool	-	-	-
20	Spleen	+	+	+
21	Spleen	+	+	+
22	LN	-	+	+
23	Spleen	+	+	+
24	Spleen	+	+	+
25	LN	+	+	+
26	LN	-	+	+
27	LN	+	+	+
28	Spleen	+	-	+
29	LN	+	+	+
30	LN	+	+	+
31	LN	+	-	+
32	Spleen	+	+	+
	N° of positives	27	24	31

Results for *Leishmania* spp. are according to Lauchaud et al. (2002), who established a sensitivity of 1×10^{-3} parasites per milliliter for this PCR. Additionally, a recent study performed by Ascencio et al. (2019) has shown that Chelex-100 resin was applied to extract DNA from whole blood, being useful for the diagnosis of canine leishmaniasis.

For the case of *Salmonella*, the sensitivity of the analytic detection with M1 was 1.415×10^4 CFU/ mL, slightly lower than M4. Pathmanathan et al. (2003) determined similar sensitivity for final point PCR identifying *Salmonella* ser. Typhimurium (3×10^4 CFU/ mL) from stool samples that contain normal flora and inhibitors like semen samples. Moreover, other researchers have improved the sensitivity of the PCR using the DNA extracted from enrichment broth for PCR screening before *Salmonella* isolation; thus, the use of Chelex-100 and broth samples should be considered in future studies (Gwida and Al-Ashmawy 2014).

For avian coccidiosis, the results indicated that DNA from *Eimeria* spp. could be isolated by both methods and were detected by PCR for the first time in Argentina. Although the sensitivity of the analytic detection with M3 (9 tOP) was slightly higher than M1 (18 tOP). Kumar et al. (2013), have shown that samples containing between 50 and 100 tOP per reaction were 100 % positive for *Eimeria* genus PCR, while samples containing between 25-50, and <25 tOP protocol sensitivity was dropped to 80% and 60% positive, respectively, using a commercial kit, though. Thus, the detection of 18 tOP per reaction using M1 would be far enough for molecular diagnosis, and further field samples are being testing. It was shown that precipitation with ammonium acetate followed by a resuspension with buffer Tris-EDTA after DNA extraction with Chelex-100 resin could improve its quality (Singh et al. 2018), demonstrating that this method would be enhanced.

On the other hand, the use of Chelex-100 has the advantage of not generating any adverse effect on the health of the operator in contrast with the use of organic solvents.

Finally, considering current values, the Chelex-100 method is 10 times cheaper than the commercial kit method, with costs per sample of \$ 0.20 and \$ 2.00, respectively. This represents a significant advantage for its application in veterinary diagnosis.

Even though the DNA extraction method for each pathogen must be tailored to the project objectives and the importance assigned to sensitivity, or other factors such as time consumption or human and financial resources, Chelex-100 could be considered as a feasible method for the development of molecular diagnostics in the veterinary field. Further studies with field samples are needed to determine the diagnostic sensitivity, and to validate this technique as a new diagnostic tool for equine paratyphoid and avian coccidiosis.

In conclusion, a simple and economic method was successfully employed for the first time to extract the DNA of *Leptospira interrogans* serovar Pomona Pomona, *Brucella melitensis*, *Salmonella* ser. Abortusequi, *Leishmania* spp., and *Eimeria* spp. for downstream applications, such as diagnostic PCR. This is especially important in low-resource settings in the veterinary field.

Acknowledgements

These studies involving animals of experimentations for the isolation of *E. tenella* were carried out under protocol 50/2018 approved by the Institutional Committee for the Care and Use of Experimental Animals.

The authors wish to thank laboratory coworkers from FCV- UBA and INTA: Mirta Castro, Gloria Jauregui, Claudia Moreno, Facundo Balbiani, Dr. Pablo Chacana, and Dra. María Barrandeguy. We also like to thank Dra. Barrios from Universidad Nacional de Salta, who selflessly provided the DNA of *Leishmania infantum* culture used as a positive control. The present work was supported by the following financing sources: USAL Project VRID 130079; INTA: 2019-PE-E8-1170 and 2019-PD-E5-1103.

References

- Ascencio ME, Sarmiento NF, Schnittger L, Florin-Christensen M, and Rodriguez AE. 2019. Molecular Diagnosis of *Leishmania* Spp. in Dogs of a Subtropical Locality of Argentina. *Transbound. Emerg. Dis.* 67 Suppl 2: 106-110.
- Bal AE, Gravekamp C, Hartskeerl R, De Meza-Brewster J, Korver H, Terpstra W. 1994. Detection of Leptospire in Urine by PCR for Early Diagnosis of Leptospirosis. *J. Clin. Microbiol.* 32: 1894-1898.
- Blake DP, Smith AL, Shirley MW. 2003. Amplified Fragment Length Polymorphism Analyses of *Eimeria* Spp.: An Improved Process for Genetic Studies of Recombinant Parasites. *Parasitol. Res.* 90: 473-475.
- Bricker BJ, Halling SM. 1994. Differentiation of *Brucella Abortus* Bv. 1, 2, and 4, *Brucella Melitensis*, *Brucella Ovis*, and *Brucella Suis* Bv. 1 by PCR. *J. Clin. Microbiol.* 32: 2660-2666.
- Bustos CP, Moroni M, Caffer MI, Ivanishevich A, Herrera M, Moreira AR, Guida N, Chacana P. 2020. Genotypic Diversity of *Salmonella* Ser. Abortusequi Isolates from Argentina. *Equine Vet. J.* 52: 98-103.
- Chapman HD, Shirley MW. 2003. The Houghton Strain of *Eimeria tenella*: A Review of the Type Strain Selected for Genome Sequencing. *Avian Pathol.* 32: 115-127.
- Chen ML, Shieh YS, Shim KS, Gerber MA. 1991. Comparative Studies on the Detection of Hepatitis B Virus DNA in Frozen and Paraffin Sections by the Polymerase Chain Reaction. *Mod. Pathol.* 4: 555-558.
- Dalloul RA, Lillehoj HS. 2006. Poultry coccidiosis: recent advancements in control measures and vaccine development. *Expert Rev. Vaccines* 5: 143-163.
- Dantas-Torres, F. 2007. The Role of Dogs as Reservoirs of *Leishmania* Parasites, with Emphasis on *Leishmania (Leishmania) Infantum* and *Leishmania (Viannia) Braziliensis*. *Vet. Parasitol.* 10;149: 139-146.
- Gill P, Kimpton CP, Sullivan K. 1992. A rapid polymerase chain reaction method for identifying fixed specimens. *Electrophoresis* 13: 173-175.
- Godfroid J, Scholz HC, Barbier T, Nicolas C, Wattiau P, Fretin D, Whatmore AM, Cloeckaert A, Blasco JM, Moriyon I, Saegerman C, Muma JB, Al Dahouk S, Neubauer H, Letesson JJ. 2011. Brucellosis at the animal/ecosystem/human interface at the beginning of the 21st century. *Prev. Vet. Med.* 102: 118-131.
- Godfroid J, Klaus N, Saegerman. 2010. Diagnosis of Brucellosis

in Livestock and Wildlife. Croat. Med. J. 51: 296-305.

Gwida MM, Al-Ashmawy MA. 2014. Culture versus PCR for *Salmonella* Species Identification in Some Dairy Products and Dairy Handlers with Special Concern to Its Zoonotic Importance. Vet. Med. Int. 2014: 1-5.

Hamer M, Saraullo V, Brihuega B, Watanave O, Martinez M, and Grune Loffler S. 2019. Comparación de Métodos de Extracción de ADN Simples y Económicos Para El Diagnóstico Molecular de Leptospirosis Animal. FAVE Sección Ciencias Veterinarias 18: 68-73.

Kumar S, Garg R, Moftah A, Clark EL, Macdonald SE, Chaudhry AS, Sparagano O, Banerjee PS, Kundu K, Tomley FM, Blake DP. 2014. An optimised protocol for molecular identification of *Eimeria* from chickens. Vet. Parasitol. 199: 24-31.

Lachaud L, Marchergui-Hammami S, Chabbert E, Dereure J, Dedet JP, Bastien P. 2002. Comparison of six PCR methods using peripheral blood for detection of canine visceral leishmaniasis. J. Clin. Microbiol. 40: 210-215.

Levett PN. 2001. Leptospirosis. Clin. Microbiol. Rev. 14: 296-326.

Malorny B, Hoorfar J, Bunge C, Helmuth R. 2003. Multicenter validation of the analytical accuracy of *Salmonella* PCR: towards an international standard. Appl. Environ. Microbiol. 69: 290-296.

Miles AA, Misra SS, Irwin JO. 1938. The Estimation of the Bactericidal Power of the Blood. J. Hyg. 38: 732-749.

Natarajan G, Kabir M, Perin J, Hossain B, Debes A, Haque R, George CM. 2018. Whatman protein saver cards for storage and detection of parasitic enteropathogens. Am. J. Trop. Med. Hyg. 99: 1613-1618.

Noh CS, Kim SS, Park SY, Moon HS, Hong Y, Ryu JS. 2019. Comparison of Two PCR Assays for *Trichomonas vaginalis*. Korean J. Parasitol. 57: 27-31.

Pastor-Fernández I, Kim S, Billington K, Bumstead J, Marugán-Hernández V, Küster T, Ferguson DJP, Vervelde L, Blake DP, Tomley FM. Development of cross-protective *Eimeria*-vectored vaccines based on apical membrane antigens. Int. J. Parasitol. 48: 505-518.

Pathmanathan SG, Cardona-Castro N, Sánchez-Jiménez MM, Correa-Ochoa MM, Puthucheary SD, Thong KL. 2003. Simple and rapid detection of *Salmonella* strains by direct PCR amplification of the *hliA* gene. J. Med. Microbiol. 52: 773-776.

Rodgers MR, Popper SJ, Wirth DF. 1990. Amplification of Kinetoplast DNA as a Tool in the Detection and Diagnosis of *Leishmania*. Exp. Parasitol. 71: 267-275.

Rossetti CA., Arenas-Gamboia AM., Maurizio E. 2017. Caprine brucellosis: A historically neglected disease with significant impact on public health. PLoS Negl. Trop. Dis. 11:1-8.

Schwarz RS, Jenkins MC, Klopp S, Miska KB. 2009. Genomic analysis of *Eimeria* spp. populations in relation to performance levels of broiler chicken farms in Arkansas and North Carolina. J. Parasitol. 95: 871-80.

Singh UA, Kumari M, Iyengar S. 2018. Method for Improving

the Quality of Genomic DNA Obtained from Minute Quantities of Tissue and Blood Samples Using Chelex 100 Resin. Biological Procedures Online 20: 1-8.

Turan C, Nanni IM, Brunelli A, Collina M. 2015. New Rapid DNA Extraction Method with Chelex from *Venturia Inaequalis* Spores. J. Microbiol. Methods. 115:139-43.

Vejarano MP, Matrone M, Keid L, Rocha MV, Ikuta CY, Rodriguez C, Salgado V, Ferreira F, Dias RA, Telles O, Ferreira Neto JS. 2013. Evaluation of four DNA extraction protocols for *Brucella Abortus* detection by PCR in tissues from experimentally infected cows with the 2308 strain. Vector Borne Zoon. Dis. 13: 237-242.

World Organisation for Animal Health (OIE). 2018. Leptospirosis. In Terrestrial Manual. 8th Ed. 1833 pp.

World Health Organization. 2010. Control of the Leishmaniasis. In World Health Organization Technical Report Series. 186 pp.